

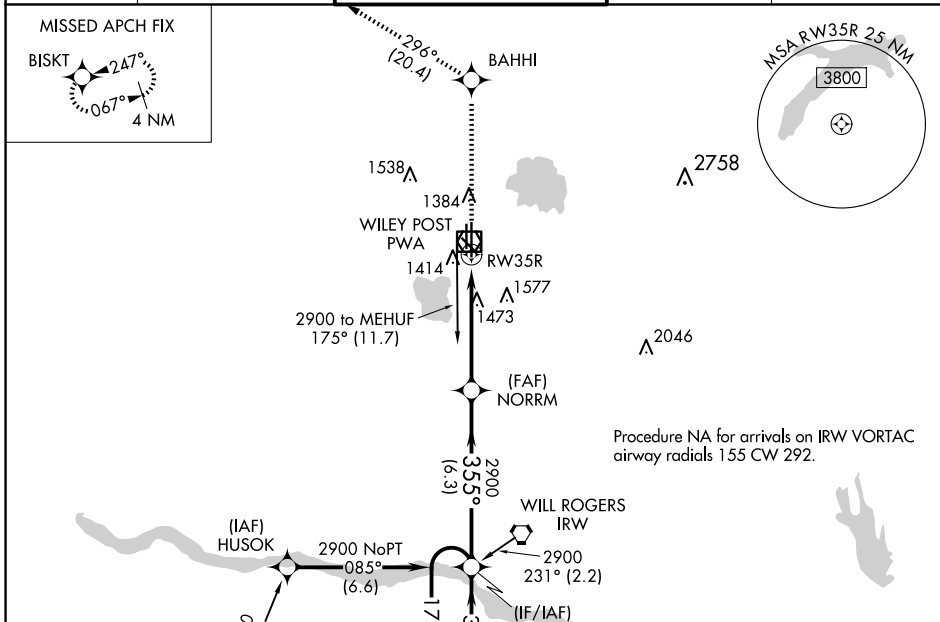
WAAS CH 42716 W35A	APP CRS 355°	Rwy Idg TDZE 1299 Apt Elev 1300
--	------------------------	---

RNAV (GPS) RWY 35R

WILEY POST (PWA)

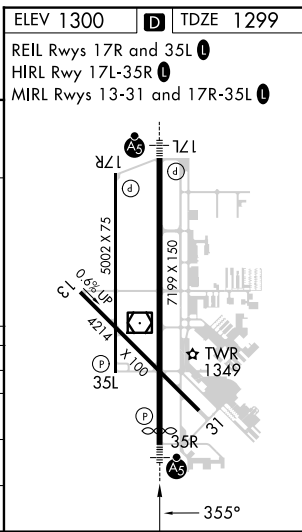
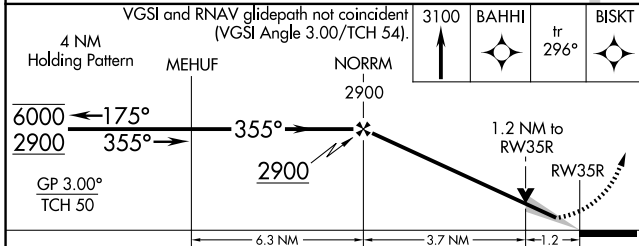
RNP APCH-GPS.		MALSRL	MISSED APPROACH: Climb to 3100 direct BAHHI and on track 296° to BISKI and hold.
For uncompensated Baro-VNAV systems, LNAV/VNAV NA below -13°C or above 54°C.		ASR	

ATIS 128.725	OKE CITY APP CON 124.6 266.8	WILEY POST TOWER ★ 126.9 (CTAF) 306.9	GND CON 121.7	UNICOM 122.95
------------------------	--	---	-------------------------	-------------------------



Procedure NA for arrivals on IRW VORTAC airway radials 155 CW 292.

ELEV 1300	TDZE 1299
REIL Rwy 17R and 35L	
HIRL Rwy 17L-35R	
MIRL Rwy 13-31 and 17R-35L	



CATEGORY	A	B	C	D
LPV DA		1499-1/2	200 (200-1/2)	
LNAV/VNAV DA		1755-7/8	456 (500-7/8)	
LNAV MDA	1740-1/2 441 (500-1/2)		1740-7/8 441 (500-7/8)	
CIRCLING	1780-1 480 (500-1)		1880-1 580 (600-1 1/2)	1880-2 580 (600-2)

SC-1, 20 MAR 2025 to 17 APR 2025

SC-1, 20 MAR 2025 to 17 APR 2025