

GARLAND FIVE DEPARTURE  
(GARLS.TT) 251ANZ4

DALLAS EXEC (RBD)  
DALLAS, TEXAS

LONE STAR DEP CON  
125.2 343.65  
ATIS  
126.35  
CLNC DEL  
118.625  
GND CON  
119.475  
EXECUTIVE TOWER ★  
127.25 (CTAF)

**TOP ALTITUDE:  
ASSIGNED BY ATC**

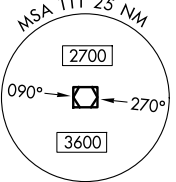
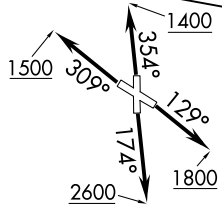
RADAR and DME required.

TAKEOFF MINIMUMS

Rwys 13, 31, 35: Standard.  
Rwy 17: 400-2 3/4 or standard with minimum  
climb of 220'/NM to 1200.

NOTE: SOLDO Transition: ATC assigned.

**MAVERICK**  
113.1 TTT  
Chan 78

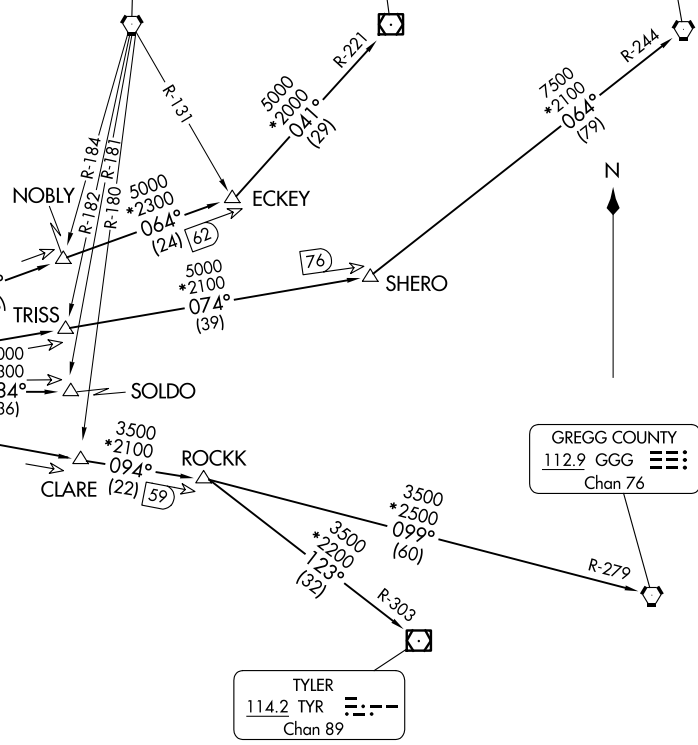


NOTE: Chart not to scale.

**BONHAM**  
114.6 BYP  
Chan 93

**PARIS**  
113.6 PRX  
Chan 83

**TEXARKANA**  
116.3 TXK  
Chan 110



**GREGG COUNTY**  
112.9 GGG  
Chan 76

**TYLER**  
114.2 TYR  
Chan 89

(CONTINUED ON FOLLOWING PAGE)

(GARLS.TT) 24305  
GARLAND FIVE DEPARTURE

AL-742 (FAA)

DALLAS EXEC (RBD)  
DALLAS, TEXAS

# GARLAND FIVE DEPARTURE



## DEPARTURE ROUTE DESCRIPTION

TAKEOFF RUNWAY 13: Climb on heading 129° to 1800 before turning westbound.

TAKEOFF RUNWAY 17: Climb on heading 174° to 2600 before turning westbound.

TAKEOFF RUNWAY 31: Climb on heading 309° to 1500 before turning southbound.

TAKEOFF RUNWAY 35: Climb on heading 354° to 1400 before turning southbound.

When entering controlled airspace, fly assigned heading for RADAR vectors to appropriate route. Maintain ATC assigned altitude.

GREGG COUNTY TRANSITION (GARL5.GGG): From over TTT VOR/DME on TTT R-094 to ROCKK, then on GGG R-279 to GGG VORTAC.

PARIS TRANSITION (GARL5.PRX): From over TTT VOR/DME on TTT R-064 to ECKEY, then on PRX R-221 to PRX VOR/DME.

SOLDO TRANSITION (GARL5.SOLDO): From over TTT VOR/DME on TTT R-084 to SOLDO.

TEXARKANA TRANSITION (GARL5.TXK): From over TTT VOR/DME on TTT R-074 to SHERO, then on TXK R-244 to TXK VORTAC.

TYLER TRANSITION (GARL5.TYR): From over TTT VOR/DME on TTT R-094 to ROCKK, then on TYR R-303 to TYR VOR/DME.

SC-2, 20 MAR 2025 to 17 APR 2025

SC-2, 20 MAR 2025 to 17 APR 2025