

KINGDOM FOUR DEPARTURE
(KING4.TTT) 25JAN24

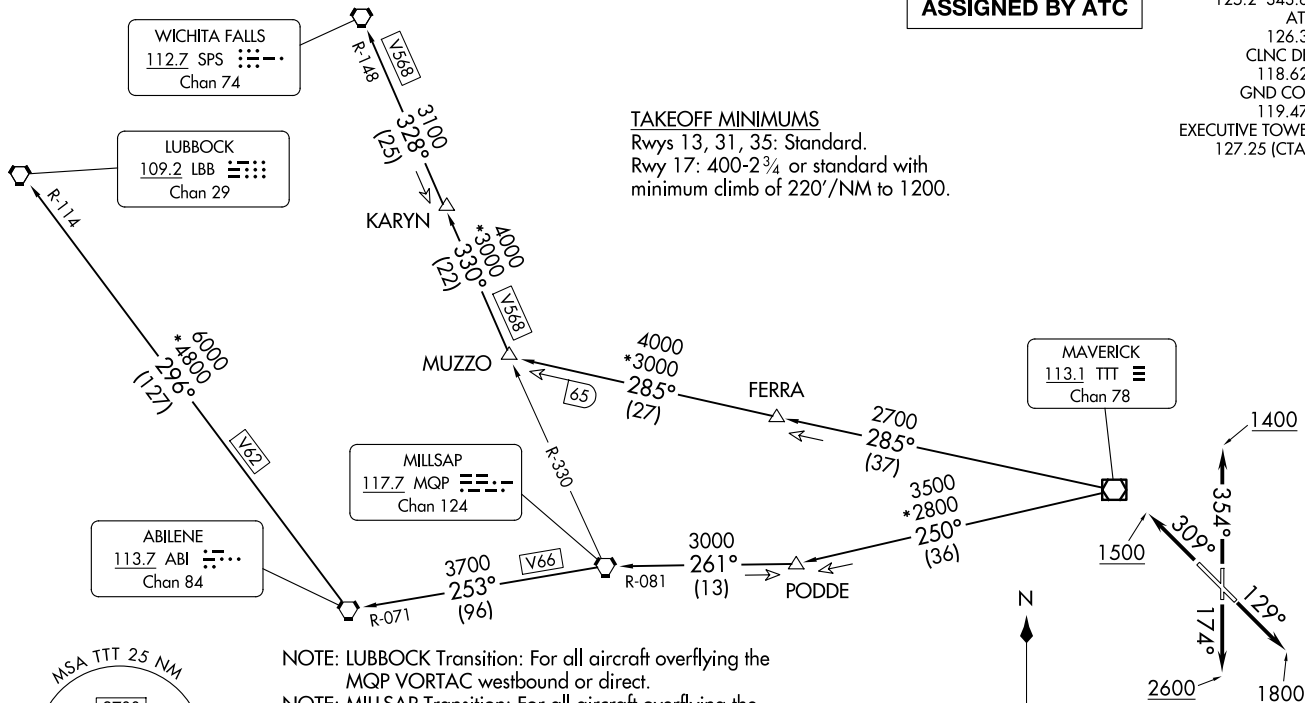
DALLAS, TEXAS
DALLAS EXEC (RBD)

RADAR and DME required.

**TOP ALTITUDE:
ASSIGNED BY ATC**

LONE STAR DEP CON
125.2 343.65
ATIS
126.35
CLNC DEL
118.625
GND CON
119.475
EXECUTIVE TOWER *
127.25 (CTAF)

TAKEOFF MINIMUMS
Rwys 13, 31, 35: Standard.
Rwy 17: 400-2¾ or standard with
minimum climb of 220'/NM to 1200.



- NOTE: LUBBOCK Transition: For all aircraft overflying the MQP VORTAC westbound or direct.
- NOTE: MILLSAP Transition: For all aircraft overflying the MQP VORTAC westbound or direct.
- NOTE: PODDE Transition: ATC assigned.
- NOTE: WICHITA FALLS Transition: For all aircraft landing within the Wichita Falls terminal area or overflying the SPS VORTAC.
- NOTE: For all aircraft requesting 17000 and below.

NOTE: Chart not to scale.

(CONTINUED ON FOLLOWING PAGE)

(KING4.TTT) 24305
KINGDOM FOUR DEPARTURE

AL-742 (FAA)

DALLAS, TEXAS
DALLAS EXEC (RBD)

KINGDOM FOUR DEPARTURE



DEPARTURE ROUTE DESCRIPTION

- TAKEOFF RUNWAY 13: Climb on heading 129° to 1800 before turning westbound.
- TAKEOFF RUNWAY 17: Climb on heading 174° to 2600 before turning westbound.
- TAKEOFF RUNWAY 31: Climb on heading 309° to 1500 before turning southbound.
- TAKEOFF RUNWAY 35: Climb on heading 354° to 1400 before turning southbound.

When entering controlled airspace, fly assigned heading for RADAR vectors to appropriate route. Maintain ATC assigned altitude.

LUBBOCK TRANSITION (KING4.LBB): From over TTT VOR/DME on TTT R-250 to PODDE, then on MQP R-081 to MQP VORTAC, then on MQP R-253 and ABI R-071 to ABI VORTAC, then on ABI R-296 and LBB R-114 to LBB VORTAC.

MILLSAP TRANSITION (KING4.MQP): From over TTT VOR/DME on TTT R-250 to PODDE, then on MQP R-081 to MQP VORTAC.

PODDE TRANSITION (KING4.PODDE): From over TTT VOR/DME on TTT R-250 to PODDE.

WICHITA FALLS TRANSITION (KING4.SPS): From over TTT VOR/DME on TTT R-285 to MUZZO, then on MQP R-330 and SPS R-148 to KARYN, then on SPS R-148 to SPS VORTAC.

SC-2, 20 MAR 2025 to 17 APR 2025

SC-2, 20 MAR 2025 to 17 APR 2025