

DALLAS, TEXAS

AL-742 (FAA)

24305

WAAS CH <b>42699</b> <b>W31A</b>	APP CRS <b>309°</b>	Rwy Idg TDZE Apt Elev	<b>6601</b> <b>660</b> <b>661</b>
--	------------------------	-----------------------------	---

# RNAV (GPS) RWY 31

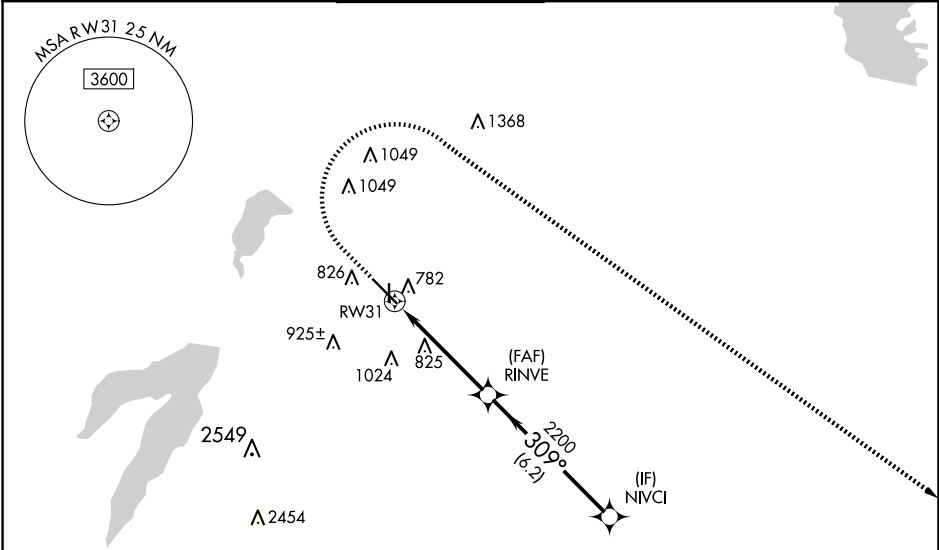
DALLAS EXEC (R.B.D)

RNP APCH - GPS.

**V** For uncompensated Baro-VNAV systems, LNAV/VNAV  
**A** NA below -2°C or above 54°C.

MISSED APPROACH: Climb to 1200 then climbing right turn to 2500 direct FLIPP and hold.

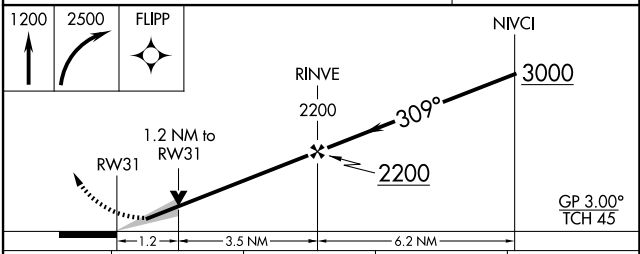
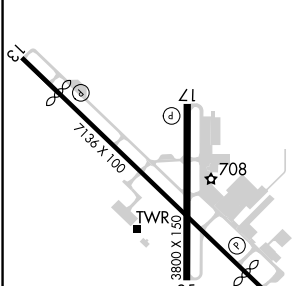
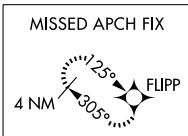
ATIS <b>126.35</b>	LONE STAR APP CON <b>125.2 343.65</b>	EXECUTIVE TOWER * <b>127.25 (CTAF) 0</b>	GND CON <b>119.475</b>	CLNC DEL <b>118.625</b>	UNICOM <b>122.95</b>
-----------------------	--	---	---------------------------	----------------------------	-------------------------



SC-2, 20 MAR 2025 to 17 APR 2025

SC-2, 20 MAR 2025 to 17 APR 2025

ELEV 661	<b>D</b>	TDZE 660
----------	----------	----------



CATEGORY	A	B	C	D
LPV DA		860-3/4	200 (200-3/4)	
LNAV/VNAV DA		993-1	333 (400-1)	
LNAV MDA	1080-1	420 (500-1)	1080-1 1/8	420 (500-1 1/8)
<b>C</b> CIRCLING	1160-1 499 (500-1)	1220-1 559 (600-1)	1340-2 679 (700-2)	1400-2 1/4 739 (800-2 1/4)

DALLAS, TEXAS  
 Amdt 1C 05OCT23

32°41'N-96°52'W

# RNAV (GPS) RWY 31

DALLAS EXEC (R.B.D)