

RNAV (GPS) RWY 35

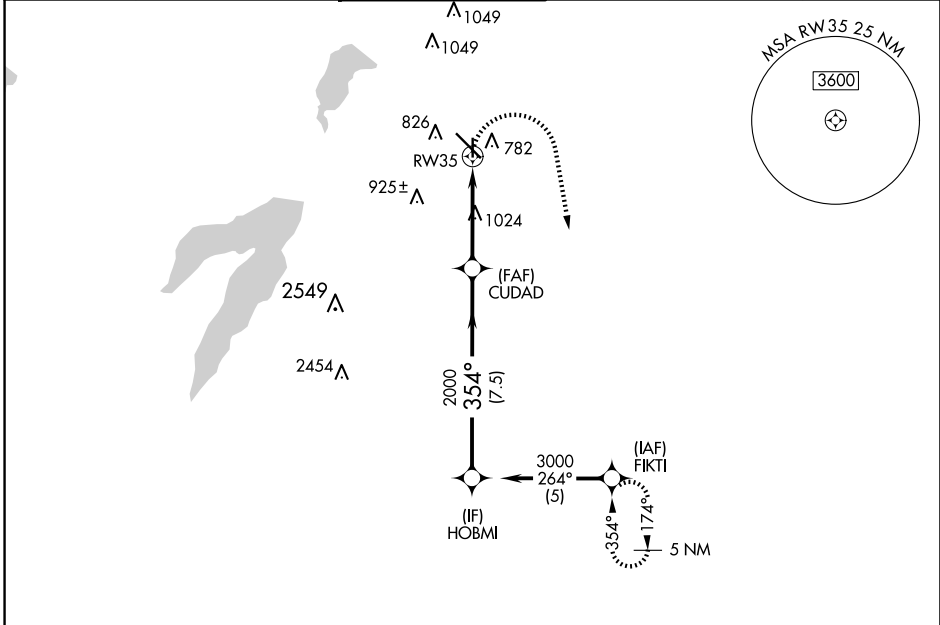
DALLAS EXEC (R.B.D)

APP CRS 354°	Rwy Idg 3800
	TDZE 659
	Apt Elev 661

RADAR required for procedure entry. RNP APCH.

MISSED APPROACH: Climbing right turn to 3000 direct FIKTI and hold.

ATIS 126.35	LONE STAR APP CON 125.2 343.65	EXECUTIVE TOWER ★ 127.25 (CTAF) 0	GND CON 119.475	CLNC DEL 118.625	UNICOM 122.95
-----------------------	--	---	---------------------------	----------------------------	-------------------------



SC-2, 20 MAR 2025 to 17 APR 2025

SC-2, 20 MAR 2025 to 17 APR 2025

ELEV 661 **D** TDZE 659

REIL Rwy 13, 17, 31 and 35
MIRL Rwy 13-31 and 17-35 **0**

	3000	FIKTI		HOBMI
	1.8	2.2 NM	7.5 NM	
CATEGORY	A	B	C	D
LNAV MDA	1280-1	621 (700-1)	1280-1¾ 621 (700-1¾)	1280-2 621 (700-2)
C CIRCLING	1280-1	619 (700-1)	1340-2 679 (700-2)	1400-2¼ 739 (800-2¼)