

VOR/DME CVE 116.2 Chan 109	APP CRS 165°	Rwy Idg 3800 TDZE 658 Apt Elev 661
------------------------------------------------	------------------------	---------------------------------------------------------------

VOR RWY 17

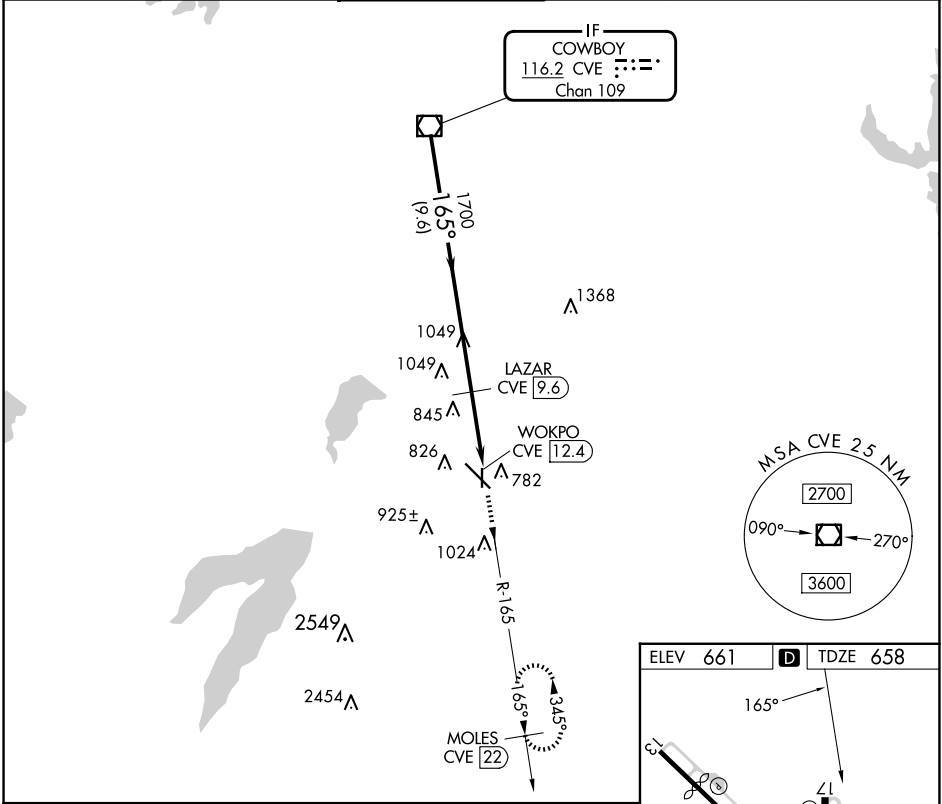
DALLAS EXEC (R.B.D)

DME required. RADAR required for procedure entry.

⚠ Rwy 17 helicopter visibility reduction below 3/4 SM NA.

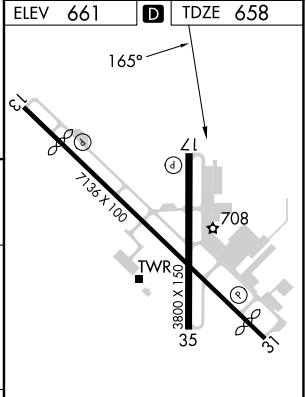
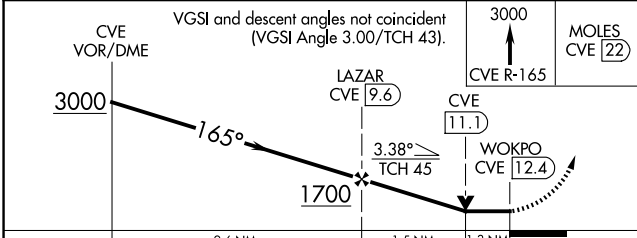
MISSED APPROACH: Climb to 3000 on CVE
VOR/DME R-165 to MOLES/22 DME and hold.

ATIS 126.35	LONE STAR APP CON 125.2 343.65	EXECUTIVE TOWER * 127.25 (CTAF)	GND CON 119.475	CLNC DEL 118.625	UNICOM 122.95
-----------------------	------------------------------------------	-------------------------------------------	---------------------------	----------------------------	-------------------------



SC-2, 20 MAR 2025 to 17 APR 2025

SC-2, 20 MAR 2025 to 17 APR 2025



CATEGORY	A	B	C	D
S-17	1120-1	462 (500-1)	1120-1¼	462 (500-1¼)
C CIRCLING	1160-1 499 (500-1)	1220-1 559 (600-1)	1340-2 679 (700-2)	1400-2¼ 739 (800-2¼)

REIL Rwy 13, 17, 31 and 35
MIRL Rwy 13-31 and 17-35