

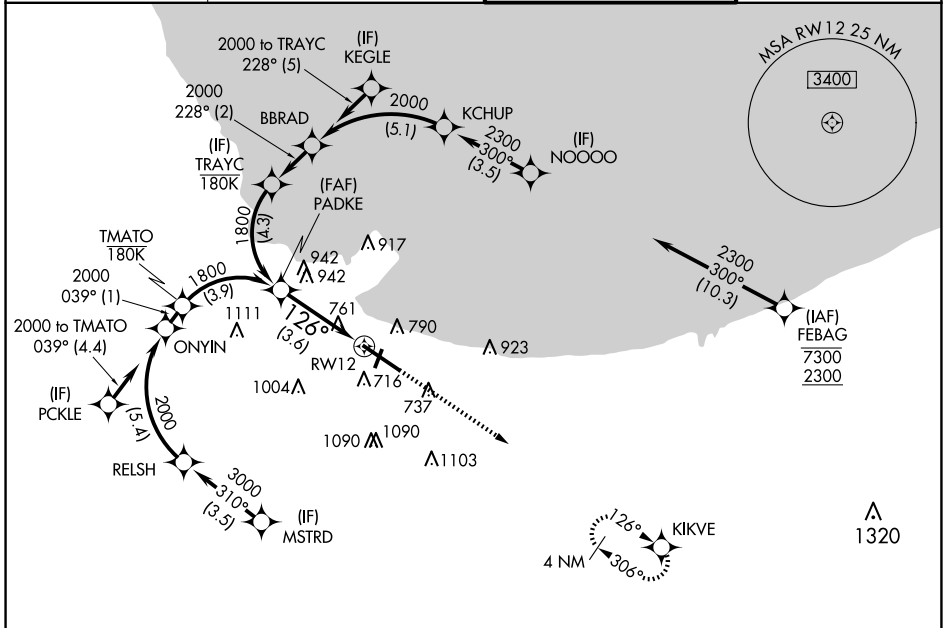
APP CRS	Rwy ldg	7959
126°	TDZE	597
	Apt Elev	597

RNAV (RNP) Z RWY 12

GARY/CHICAGO INTL (GYY)

RNP AR APCH - GPS.	For uncompensated Baro-VNAV systems, procedure NA below -16°C or above 54°C.	MISSED APPROACH: Climb to 2400 direct KIKVE and hold.
--------------------	--	---

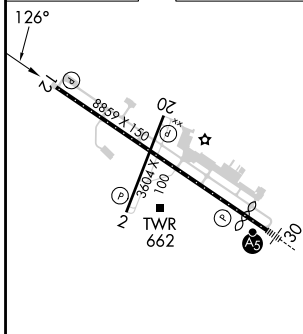
ATIS 134.575	CHICAGO APP CON 133.1 285.6	GARY TOWER ★ 125.6 (CTAF) 0	GND CON 121.9
------------------------	---------------------------------------	---------------------------------------	-------------------------



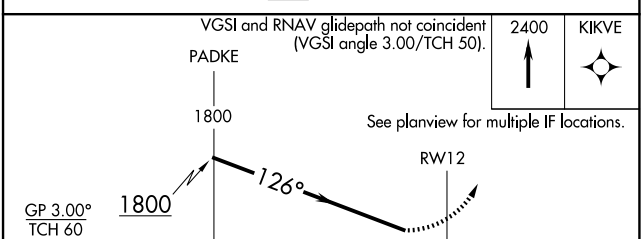
EC-2, 20 MAR 2025 to 17 APR 2025

EC-2, 20 MAR 2025 to 17 APR 2025

ELEV 597	D	TDZE 597
----------	----------	----------



REIL Rwy 2, 12 and 20	1
HIRL Rwy 12-30	1
MIRL Rwy 2-20	1



CATEGORY	A	B	C	D
RNP 0.10 DA		913-7/8	316 (400-7/8)	
RNP 0.30 DA		1043-1 3/8	446 (500-1 3/8)	

AUTHORIZATION REQUIRED