


WAAS CH 78323 W30A	APP CRS 306°	Rwy ldg 7959 TDZE 591 Apt Elev 597
--	------------------------	---

RNAV (GPS) Y RWY 30

GARY/CHICAGO INTL (GYY)

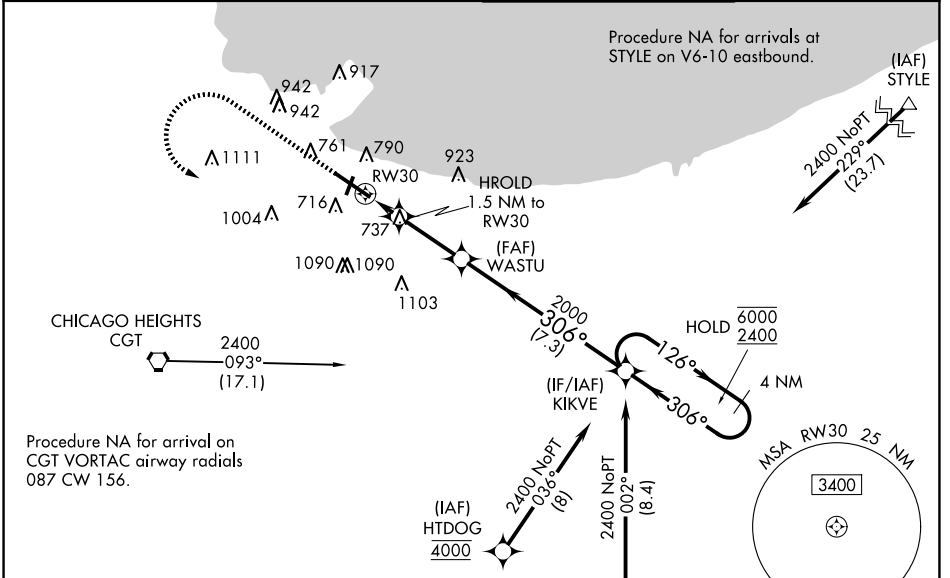
RNP APCH - GPS.

⚠ For uncompensated Baro-VNAV systems, LNAV/VNAV NA below -16°C or above 54°C. For inop ALS, increase LNAV Cat C and D visibility to RVR 6000.
**** RVR 1800 authorized with use of FD or AP or HUD to DA (NA when using Chicago Midway Intl altimeter setting).**

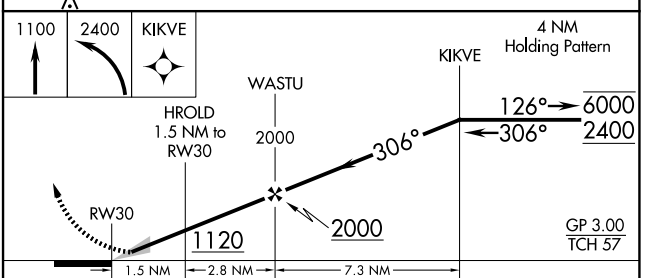
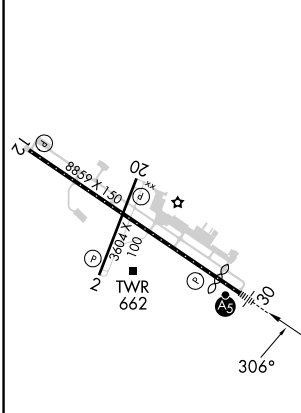
MALSR 

MISSED APPROACH: Climb to 1100 then climbing left turn to 2400 direct KIKVE and hold.

ATIS 134.575	CHICAGO APP CON 133.1 285.6	GARY TOWER ★ 125.6 (CTAF) 	GND CON 121.9
------------------------	---------------------------------------	---	-------------------------



ELEV 597	D	TDZE 591
----------	----------	----------



1.5 NM	2.8 NM	7.3 NM	
1100	2400	KIKVE	
1731			
1120	2000	2000	6000
126°	306°	306°	126°
4 NM			Holding Pattern
GP 3.00			TCH 57
CATEGORY	A	B	C
LPV DA**		791/24	200 (200-1/2)
LNAV/VNAV DA		991/35	400 (400-5/8)
LNAV MDA	1000/24	409 (500-1/2)	1000/40 409 (500-3/4)
C CIRCLING	1160-1 563 (600-1)	1180-1 583 (600-1)	1400-2 1/4 803 (900-2 1/4) 1420-2 3/4 823 (900-2 3/4)

REIL Rwy 2, 12 and 20 
 HIRL Rwy 12-30 
 MIRL Rwy 2-20 

RNAV (GPS) Y RWY 30

EC-2, 20 MAR 2025 to 17 APR 2025

EC-2, 20 MAR 2025 to 17 APR 2025