

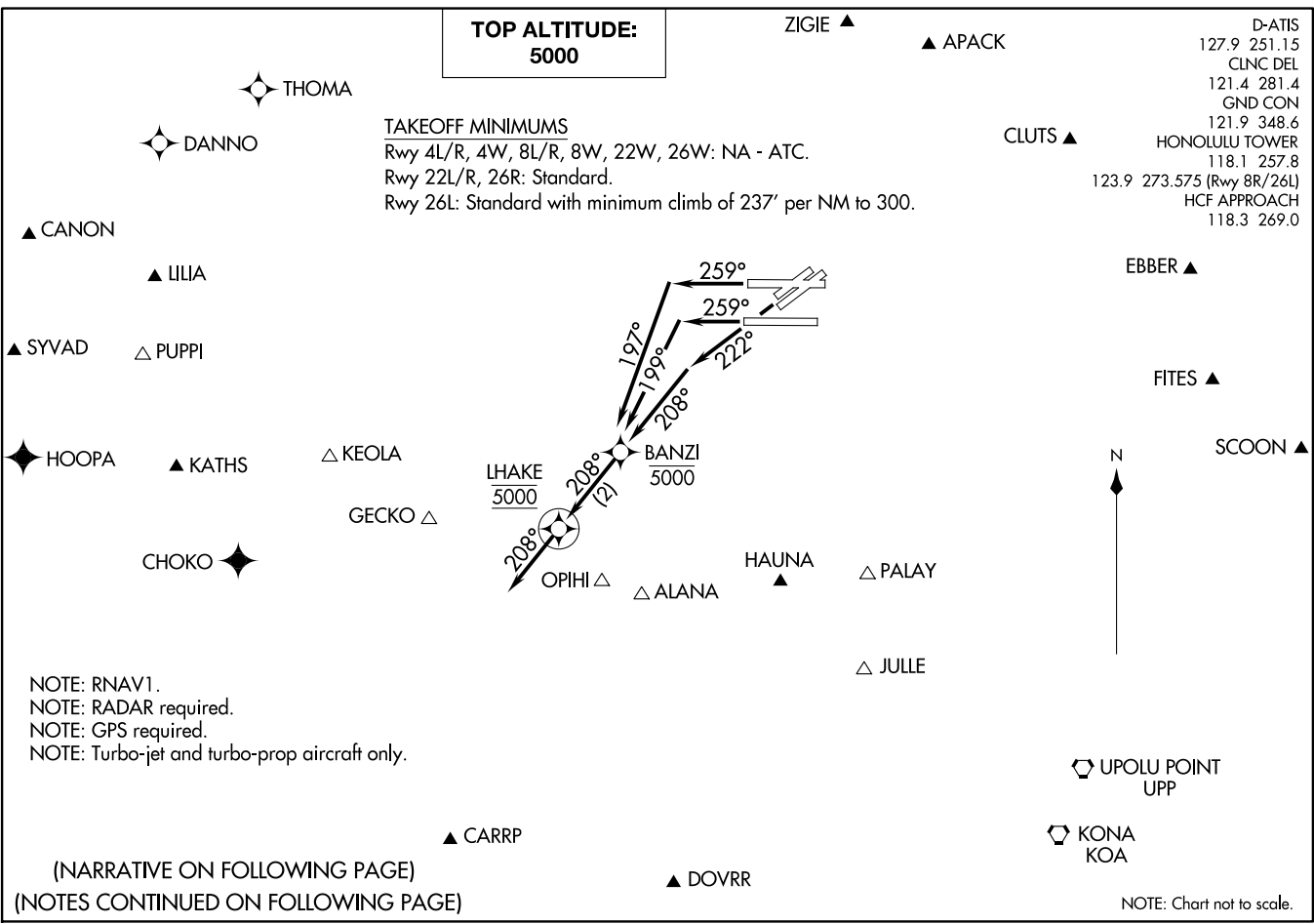
**TOP ALTITUDE:  
5000**

**TAKEOFF MINIMUMS**  
Rwy 4L/R, 4W, 8L/R, 8W, 22W, 26W: NA - ATC.  
Rwy 22L/R, 26R: Standard.  
Rwy 26L: Standard with minimum climb of 237' per NM to 300.

D-ATIS  
127.9 251.15  
CLNC DEL  
121.4 281.4  
GND CON  
121.9 348.6  
HONOLULU TOWER  
118.1 257.8  
123.9 273.575 (Rwy 8R/26L)  
HCF APPROACH  
118.3 269.0

BANZI ONE DEPARTURE (RNAV)  
(BANZI1, BANZI) 300ANZ0  
DANIEL K INOUYE INTL (HNL) (PHNL)  
HONOLULU, HAWAII

BANZI ONE DEPARTURE (RNAV)  
20030  
AL-754 (FAA)  
DANIEL K INOUYE INTL (HNL) (PHNL)  
HONOLULU, HAWAII



NOTE: RNAV1.  
NOTE: RADAR required.  
NOTE: GPS required.  
NOTE: Turbo-jet and turbo-prop aircraft only.

(NARRATIVE ON FOLLOWING PAGE)  
(NOTES CONTINUED ON FOLLOWING PAGE)

NOTE: Chart not to scale.



DEPARTURE ROUTE DESCRIPTION

TAKEOFF RUNWAYS 22L/R: Climb on heading 222° to intercept course 208° to cross BANZI at or below 5000, thence . . . .

TAKEOFF RUNWAY 26L: Climb on heading 259° to intercept course 199° to cross BANZI at or below 5000, thence . . . .

TAKEOFF RUNWAY 26R: Climb on heading 259° to intercept course 197° to cross BANZI at or below 5000, thence . . . .

. . . . on track 208° to LHAKE, then on track 208° for RADAR vectors to assigned route/fix, maintain 5000 or as assigned by ATC. Expect clearance to filed altitude/flight level within 10 minutes after departure.

- NOTE: ALANA departures expect direct/vectors to ALANA/V8/V16/V20/V21.
- NOTE: APACK departures expect direct/vectors to APACK/R463.
- NOTE: CANON departures expect direct/vectors to CANON/V15.
- NOTE: CARRP departures expect direct/vectors to CARRP/A579.
- NOTE: CHOKO departures expect direct/vectors to CHOKO/R584/B326.
- NOTE: CLUTS departures expect direct/vectors to CLUTS/R465.
- NOTE: DANNO departures expect direct/vectors to DANNO.
- NOTE: DOVRR departures expect direct/vectors to DOVRR/B596.
- NOTE: EBBER departures expect direct/vectors to EBBER/R577.
- NOTE: FITES departures expect direct/vectors to FITES/R578.
- NOTE: GECKO departures expect direct/vectors to GECKO/V4/V12/V16.
- NOTE: HAUNA departures expect direct/vectors to HAUNA/V8/V16/V20/V21/LNY.
- NOTE: HOOPA departures expect direct/vectors to HOOPA/A450.
- NOTE: JULLE departures expect direct/vectors to JULLE/V16/V20/V21.
- NOTE: KATHS departures expect direct/vectors to KATHS/A450.
- NOTE: KEOLA departures expect direct/vectors to KEOLA/V16.
- NOTE: KOA departures expect direct/vectors to KOA.
- NOTE: LILIA departures expect direct/vectors to LILIA/V15.
- NOTE: OPIHI departures expect direct/vectors to OPIHI/V8/V16/V20/V21.
- NOTE: PALAY departures expect direct/vectors to PALAY/V2/V8/LNY.
- NOTE: PUPPI departures expect direct/vectors to PUPPI/V16.
- NOTE: SCOON departures expect direct/vectors to SCOON.
- NOTE: SYVAD departures expect direct/vectors to SYVAD/V16.
- NOTE: THOMA departures expect direct/vectors to THOMA.
- NOTE: UPP departures expect direct/vectors to UPP.
- NOTE: ZIGIE departures expect direct/vectors to ZIGIE/A331.

PAC, 20 FEB 2025 to 17 APR 2025

PAC, 20 FEB 2025 to 17 APR 2025