

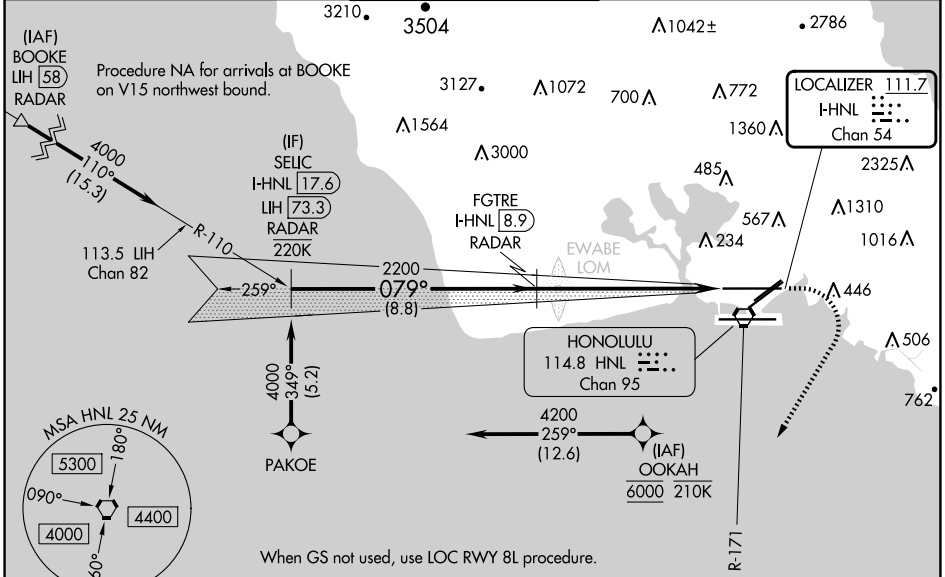
LOC/DME I-HNL 111.7 Chan 54	APP CRS 079°	Rwy Idg 12312 TDZE 13 Apt Elev 13
--	------------------------	--

ILS RWY 8L

DANIEL K INOUE INTL (HNL) (PHNL)

RNP APCH - GPS. From OOKAH.	MAISR	MISSED APPROACH: Climb to 500 then climbing right turn to 5000 on heading 200° and HNL VORTAC R-171 to ALANA INT/HNL 13.9 DME and hold, continue climb-in-hold to 5000.
DME or RADAR required.		
<p>For inop ALS, increase Cat E visibility to ¾ SM. OOKAH transition NA for Cat E aircraft. Cat E restricted to USAF/USN aircraft.</p>		

D-ATIS 127.9 251.15	HCF APPROACH 118.3 269.0	HONOLULU TOWER 118.1 257.8 123.9 273.575 (Rwy 8R/26L)	GND CON 121.9 348.6	CLNC DEL 121.4 281.4
-------------------------------	------------------------------------	---	-------------------------------	--------------------------------



PAC, 20 FEB 2025 to 17 APR 2025

PAC, 20 FEB 2025 to 17 APR 2025

