

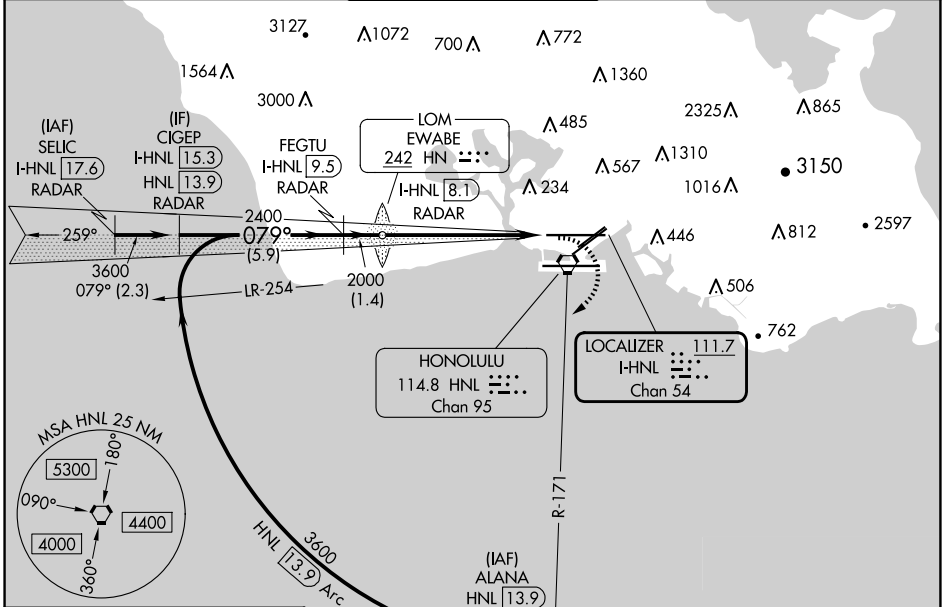
LOC/DME I-HNL 111.7 Chan 54	APP CRS 079°	Rwy Idg 12312 TDZE 14 Apt Elev 14
--	------------------------	--

LOC RWY 8L

DANIEL K INOUEY INTL (HNL) (PHNL)

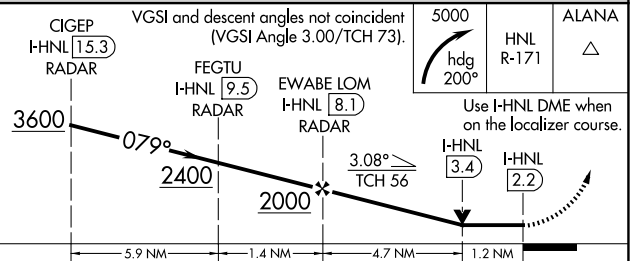
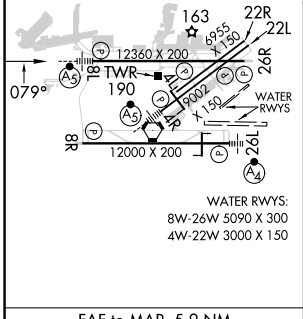
DME or RADAR required.		MALSR 	MISSED APPROACH: Climbing right turn to 5000 on heading 200° and HNL VORTAC R-171 to ALANA INT/HNL 13.9 DME and hold, continue climb-in-hold to 5000.
<p>▼ Circling Rwy 22R NA at night. Circling NA for Cats A and B northwest of Rwy 8L and 22R and for Cats C and D north of Rwy 8L-26R. Circling NA to sea lanes 4W, 8W, 22W and 26W. For inop ALS, increase S-LOC 8L Cats C and D visibility to 1 3/8 SM.</p>			

D-ATIS 127.9 251.15	HCF APPROACH 118.3 269.0	HONOLULU TOWER 118.1 257.8 123.9 273.575 (Rwy 8R/26L)	GND CON 121.9 348.6	CLNC DEL 121.4 281.4
-------------------------------	------------------------------------	---	-------------------------------	--------------------------------



ELEV 14	D	TDZE 14
MIRL Rwy 4L-22R REIL Rwy 4L, 8R, 22L, 22R, and 26R HIRL Rwy 4R-22L, 8L-26R, and 8R-26L		

Procedure NA for arrivals at ALANA on V16 eastbound.



FAF to MAP 5.9 NM					
Knots	60	90	120	150	180
Min:Sec	5:54	3:56	2:57	2:22	1:58

CATEGORY	A	B	C	D
S-8L	480-1/2	466 (500-1/2)	480-1	466 (500-1)
C CIRCLING	680-1	666 (700-1)	820-2 1/4 806 (900-2/4)	1280-3 1266 (1300-3)

PAC, 20 FEB 2025 to 17 APR 2025

PAC, 20 FEB 2025 to 17 APR 2025