

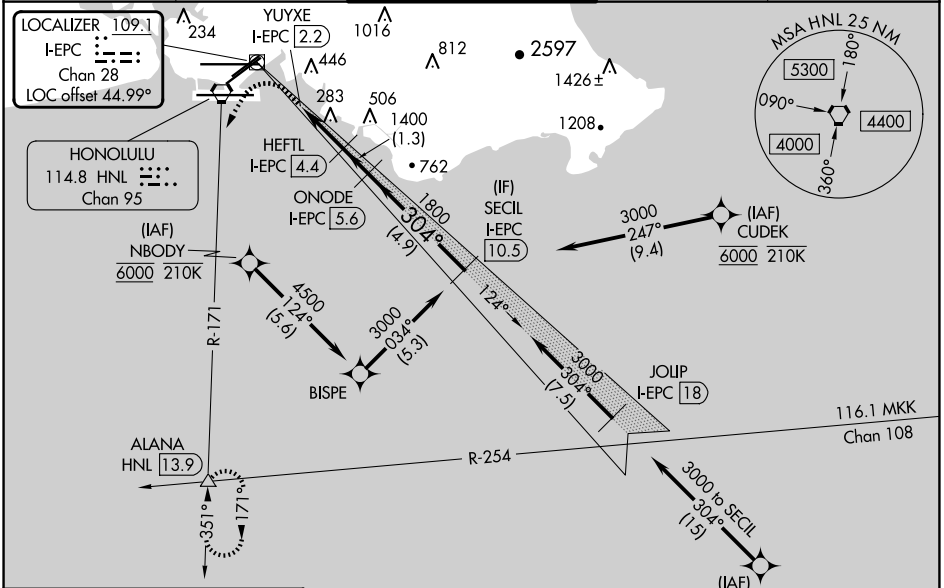
LOC/DME I-EPC <b>109.1</b> Chan 28	APP CRS <b>304°</b>	Rwy Idg TDZE <b>10</b> Apt Elev <b>13</b>
--	------------------------	---

# LDA RWY 26L

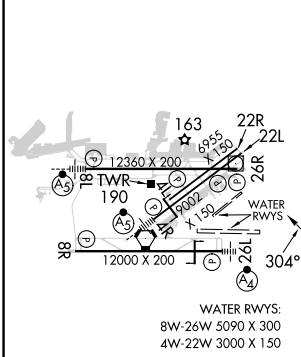
DANIEL K INOUE INTL (HNL) (PHNL)

DME required. From CUDEK, NBODY, SHLAE, RNAV 1-GPS required.		MALSF 	MISSED APPROACH: Climb to 600 then climbing left turn to 3000 on HNL VORTAC R-171 to ALANA INT/ HNL 13.9 DME and hold.

D-ATIS <b>127.9 251.15</b>	HCF APPROACH <b>118.3 269.0</b>	HONOLULU TOWER <b>118.1 257.8</b> <b>123.9 273.575</b> (Rwy 8R/26L)	GND CON <b>121.9 348.6</b>	CLNC DEL <b>121.4 281.4</b>
-------------------------------	------------------------------------	---	-------------------------------	--------------------------------



ELEV 13	<b>D</b>	TDZE 10
---------	----------	---------



Procedure NA for arrivals at SAKKI on V16-21 eastbound.	<p>↑ HNL R-171</p> <p>Use I-EPC DME when on the localizer course.</p> <p>YUYXE I-EPC 2.2 (3.10° TCH 60)</p> <p>HEFTL I-EPC 4.4</p> <p>ONODE I-EPC 5.6</p> <p>SECIL I-EPC 10.5</p> <p>3000</p> <p>2.2 NM   1.3 NM   4.9 NM</p>				
CATEGORY	A	B	C	D	E
S-LDA 26L	600-2 590 (600-2)				
<b>C</b> CIRCLING	680-2¼ 667 (700-2¼)	760-2¼ 747 (800-2¼)	820-2¼ 807 (900-2¼)	1400-3 1387 (1400-3)	NA

PAC, 20 FEB 2025 to 17 APR 2025

PAC, 20 FEB 2025 to 17 APR 2025