

MOLOKAI FIVE DEPARTURE

RADAR and DME required

**TOP ALTITUDE:
ASSIGNED BY ATC**

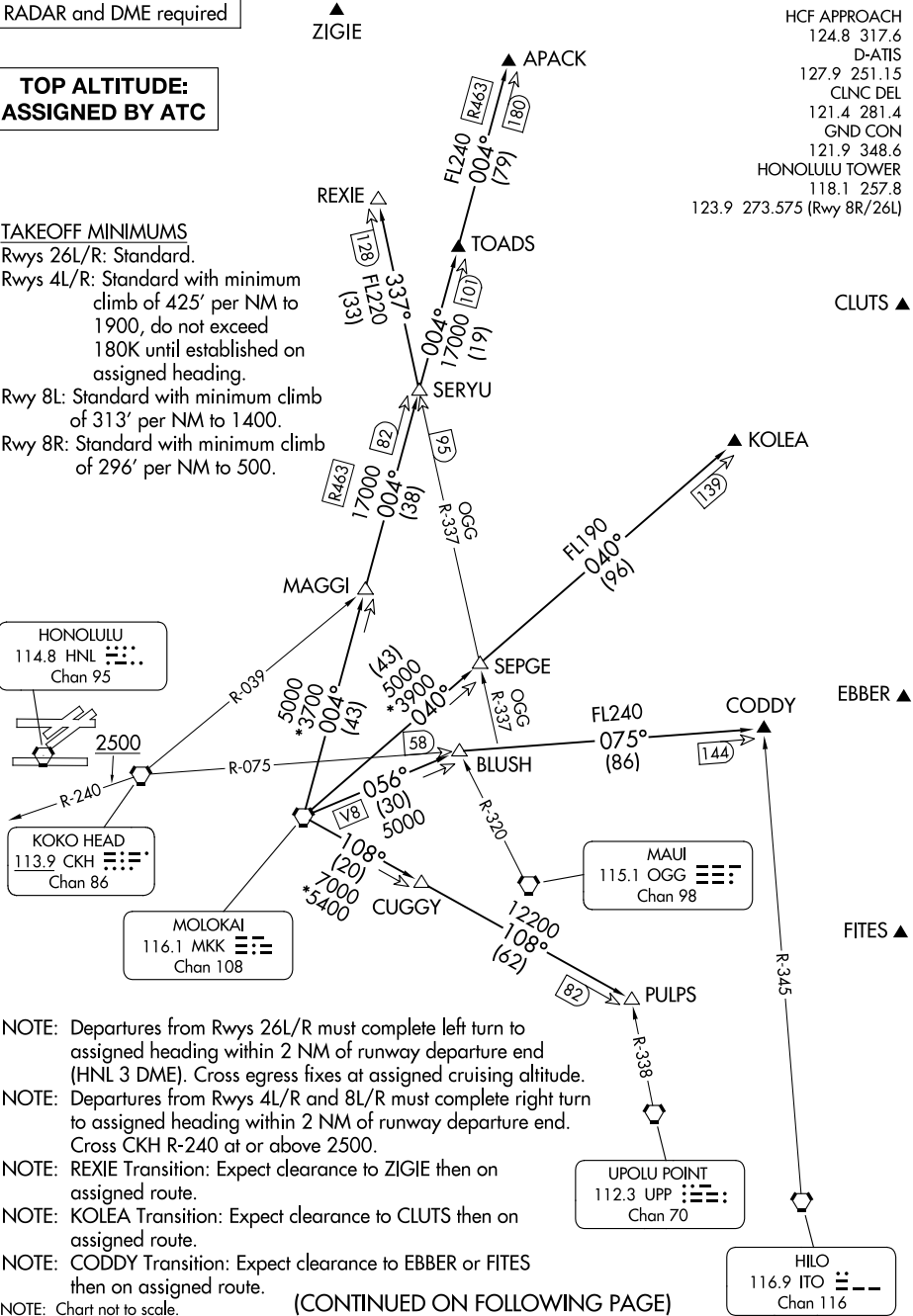
TAKEOFF MINIMUMS

Rwys 26L/R: Standard.
 Rwys 4L/R: Standard with minimum climb of 425' per NM to 1900, do not exceed 180K until established on assigned heading.
 Rwy 8L: Standard with minimum climb of 313' per NM to 1400.
 Rwy 8R: Standard with minimum climb of 296' per NM to 500.

HCF APPROACH
 124.8 317.6
 D-ATIS
 127.9 251.15
 CLNC DEL
 121.4 281.4
 GND CON
 121.9 348.6
 HONOLULU TOWER
 118.1 257.8
 123.9 273.575 (Rwy 8R/26L)

PAC, 20 FEB 2025 to 17 APR 2025

PAC, 20 FEB 2025 to 17 APR 2025



MOLOKAI FIVE DEPARTURE



DEPARTURE ROUTE DESCRIPTION

Turn right/left to heading as assigned by Tower, expect vectors to MKK VORTAC, maintain 5000; then on transition. Expect clearance to enroute altitude/flight level at MKK VORTAC. Cross egress fixes REXIE, APACK, KOLEA, and CODDY at assigned cruising altitude, unless otherwise advised by ATC.

APACK TRANSITION (MKK5.APACK): From over MKK VORTAC on MKK R-004 to APACK.

CODDY TRANSITION (MKK5.CODDY): From over MKK VORTAC on MKK R-056 and CKH R-075 to CODDY.

KOLEA TRANSITION (MKK5.KOLEA): From over MKK VORTAC on MKK R-040 to KOLEA.

PULPS TRANSITION (MKK5.PULPS): From over MKK VORTAC on MKK R-108 to PULPS.

REXIE TRANSITION (MKK5.REXIE): From over MKK VORTAC on MKK R-004 and OGG R-337 to REXIE.

PAC: 20 FEB 2025 to 17 APR 2025

PAC: 20 FEB 2025 to 17 APR 2025