

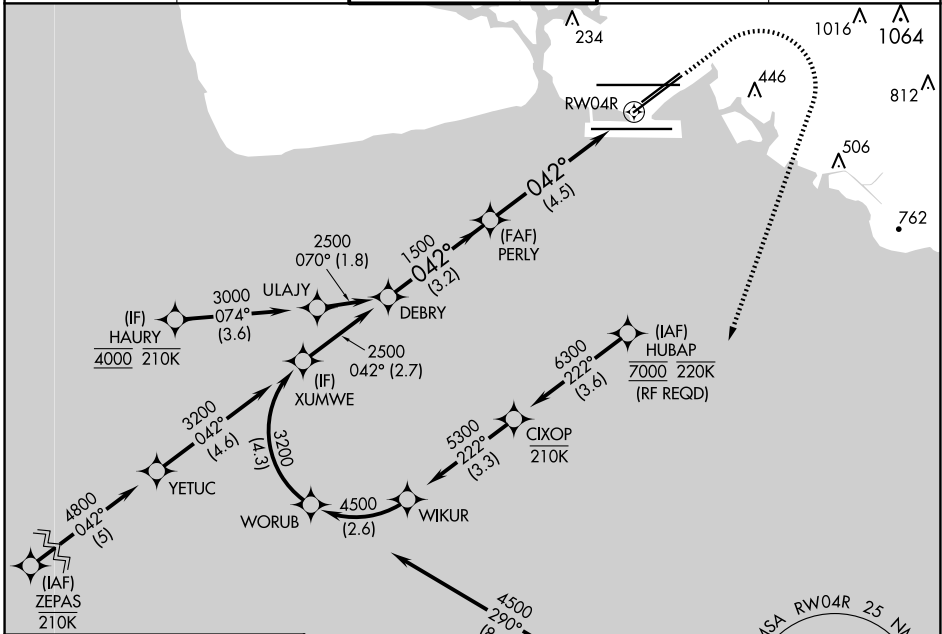
APP CRS	Rwy Idg	8950
042°	TDZE	9
	Apt Elev	13

RNAV (RNP) Z RWY 4R

DANIEL K INOUYE INTL (HNL) (PHNL)

RNP AR APCH.	MALSR	MISSED APPROACH: Climb to 580 then climbing right turn to 3000 direct ALANA and hold.
▼ For uncompensated Baro-VNAV systems, procedure NA below 17°C or above 54°C. For inop ALS, increase RNP 0.30 Cat A visibility to ¾ SM and Cat B to ½ SM.		

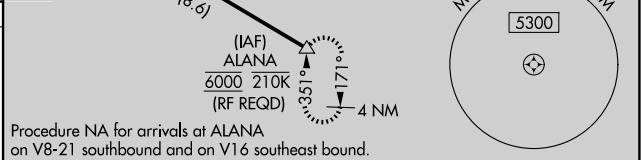
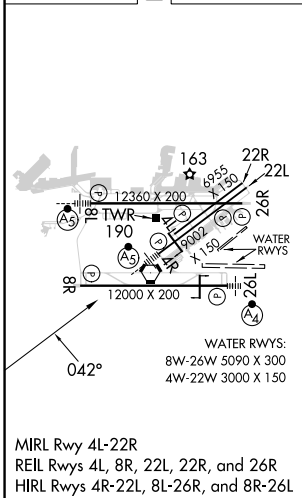
D-ATIS	HCF APPROACH	HONOLULU TOWER	GND CON	CLNC DEL
127.9 251.15	118.3 269.0	118.1 257.8 123.9 273.575 (Rwy 8R/26L)	121.9 348.6	121.4 281.4



PAC, 20 FEB 2025 to 17 APR 2025

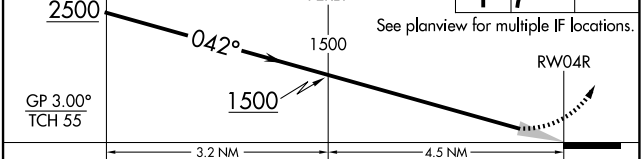
PAC, 20 FEB 2025 to 17 APR 2025

ELEV	13	D	TDZE	9
------	-----------	----------	------	----------



Procedure NA for arrivals at ALANA on V8-21 southbound and on V16 southeast bound.

DEBRY	VGSI and RNAV glidepath not coincident (VGSI Angle 3.00/TCH 71).	580	3000	ALANA



CATEGORY	A	B	C	D
RNP 0.30 DA	259-½ 250 (300-½)	277-½ 268 (300-½)	432-¾ 423 (500-¾)	

AUTHORIZATION REQUIRED