

VORTAC HNL <b>114.8</b> Chan <b>95</b>	APP CRS <b>305°</b>	Rwy Idg TDZE Apt Elev	<b>N/A</b> <b>N/A</b> <b>13</b>
--	------------------------	-----------------------------	---------------------------------------

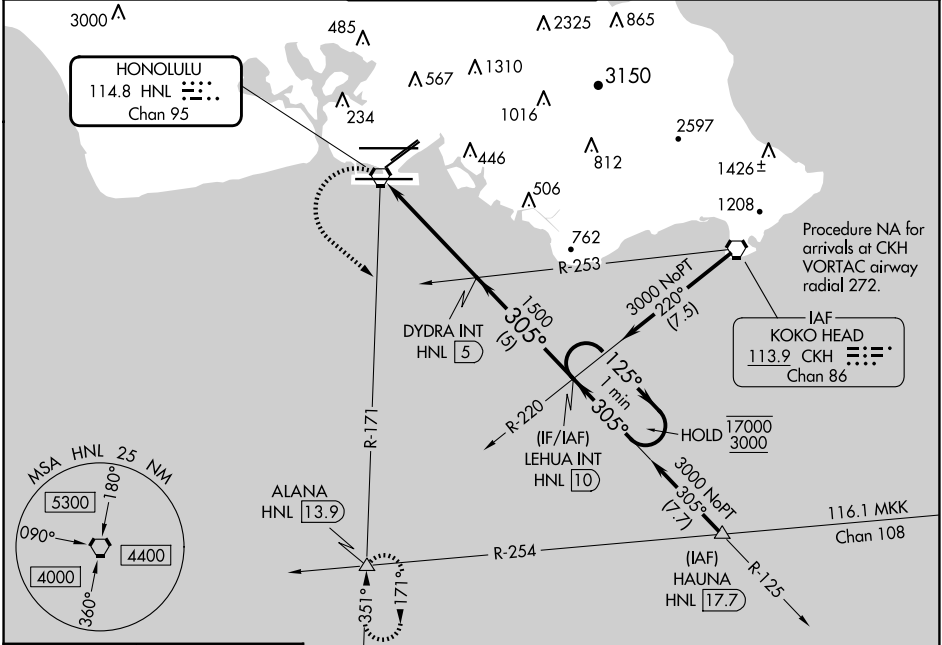
# VOR or TACAN-A

DANIEL K INOUEY INTL (HNL) (PHNL)

**▼** Circling Rwy 22R NA at night. Circling NA for Cats A and B northwest of Rwys 8L and 22R. Circling NA for Cats C and D north of Rwy 8L-26R. Circling NA to sea lanes 4W, 8W, 22W, and 26W.

**▲** MISSED APPROACH: Climbing left turn to 3000 on HNL R-171 to ALANA INT/HNL 13.9 DME and hold.

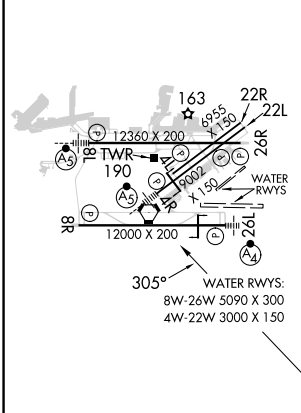
D-ATIS <b>127.9 251.15</b>	HCF APPROACH <b>118.3 269.0</b>	HONOLULU TOWER <b>118.1 257.8</b> <b>123.9 273.575</b> (Rwy 8R/26L)	GND CON <b>121.9 348.6</b>	CLNC DEL <b>121.4 281.4</b>
-------------------------------	------------------------------------	---	-------------------------------	--------------------------------



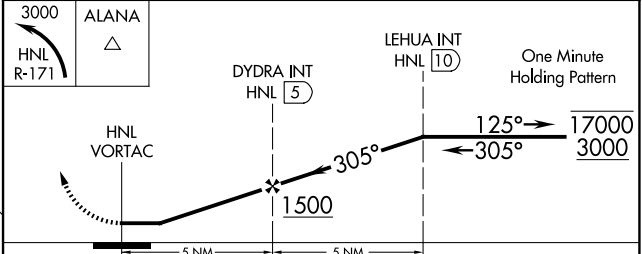
PAC, 20 FEB 2025 to 17 APR 2025

PAC, 20 FEB 2025 to 17 APR 2025

ELEV 13	<b>D</b>
---------	----------



MIRL Rwy 4L-22R  
REIL Rwys 4L, 8R, 22L, 22R, and 26R  
HIRL Rwys 4R-22L, 8L-26R, and 8R-26L



CATEGORY	A	B	C	D
<b>C</b> CIRCLING	680-1 667 (700-1)	760-1 747 (800-1)	820-2¼ 807 (900-2¼)	1400-3 1387 (1400-3)