

**TOP ALTITUDE:
ASSIGNED BY ATC**

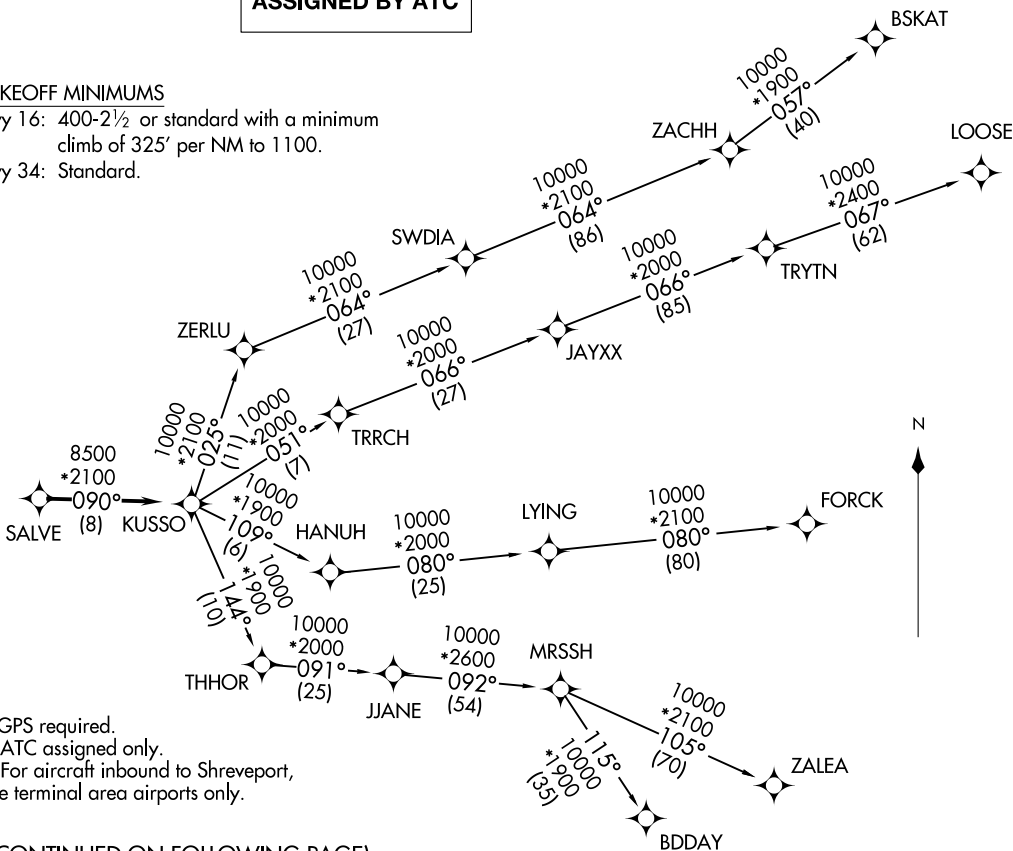
TAKEOFF MINIMUMS

Rwy 16: 400-2½ or standard with a minimum climb of 325' per NM to 1100.

Rwy 34: Standard.

KUSSO ONE DEPARTURE (RNAV)
 (KUSSO1 .KUSSO) 24MAR22

LONE STAR DEP CON
 124.3 282.275
 ATIS
 133.4
 CLNC DEL
 119.55
 GND CON
 121.6
 ADDISON TOWER ★
 126.0 (CTAF) 239.0



- NOTE: RADAR required.
- NOTE: RNAV 1.
- NOTE: DME/DME/IRU or GPS required.
- NOTE: BDDAY Transition: ATC assigned only.
- NOTE: MRSSH Transition: For aircraft inbound to Shreveport, Jackson and Monroe terminal area airports only.

(CONTINUED ON FOLLOWING PAGE)

NOTE: Chart not to scale.

DALLAS, TEXAS
 ADDISON (ADS)

(KUSSO1 .KUSSO) 24305
 KUSSO ONE DEPARTURE (RNAV)

AL-788 (FAA)

ADDISON (ADS)
 DALLAS, TEXAS

KUSSO ONE DEPARTURE (RNAV)



DEPARTURE ROUTE DESCRIPTION

When entering controlled airspace, fly heading assigned by ATC, expect vector to SALVE, then on track 090° to KUSSO, then on assigned transition. Maintain ATC assigned altitude, expect filed altitude 10 minutes after departure.

- BDDAY TRANSITION (KUSSO1.BDDAY)
- BSKAT TRANSITION (KUSSO1.BSKAT)
- FORCK TRANSITION (KUSSO1.FORCK)
- LOOSE TRANSITION (KUSSO1.LOOSE)
- MRSSH TRANSITION (KUSSO1.MRSSH)
- ZALEA TRANSITION (KUSSO1.ZALEA)

SC-2, 20 MAR 2025 to 17 APR 2025

SC-2, 20 MAR 2025 to 17 APR 2025