

SWABR ONE DEPARTURE (RNAV)
(SWABR1 .SWABR) 24MAR22

(SWABR1 .SWABR) 24305
SWABR ONE DEPARTURE (RNAV)

**TOP ALTITUDE:
ASSIGNED BY ATC**

LONE STAR DEP CON
124.3 282.275
ATIS
133.4
CLNC DEL
119.55
GND CON
121.6
ADDITION TOWER*
126.0 (CTAF) 239.0

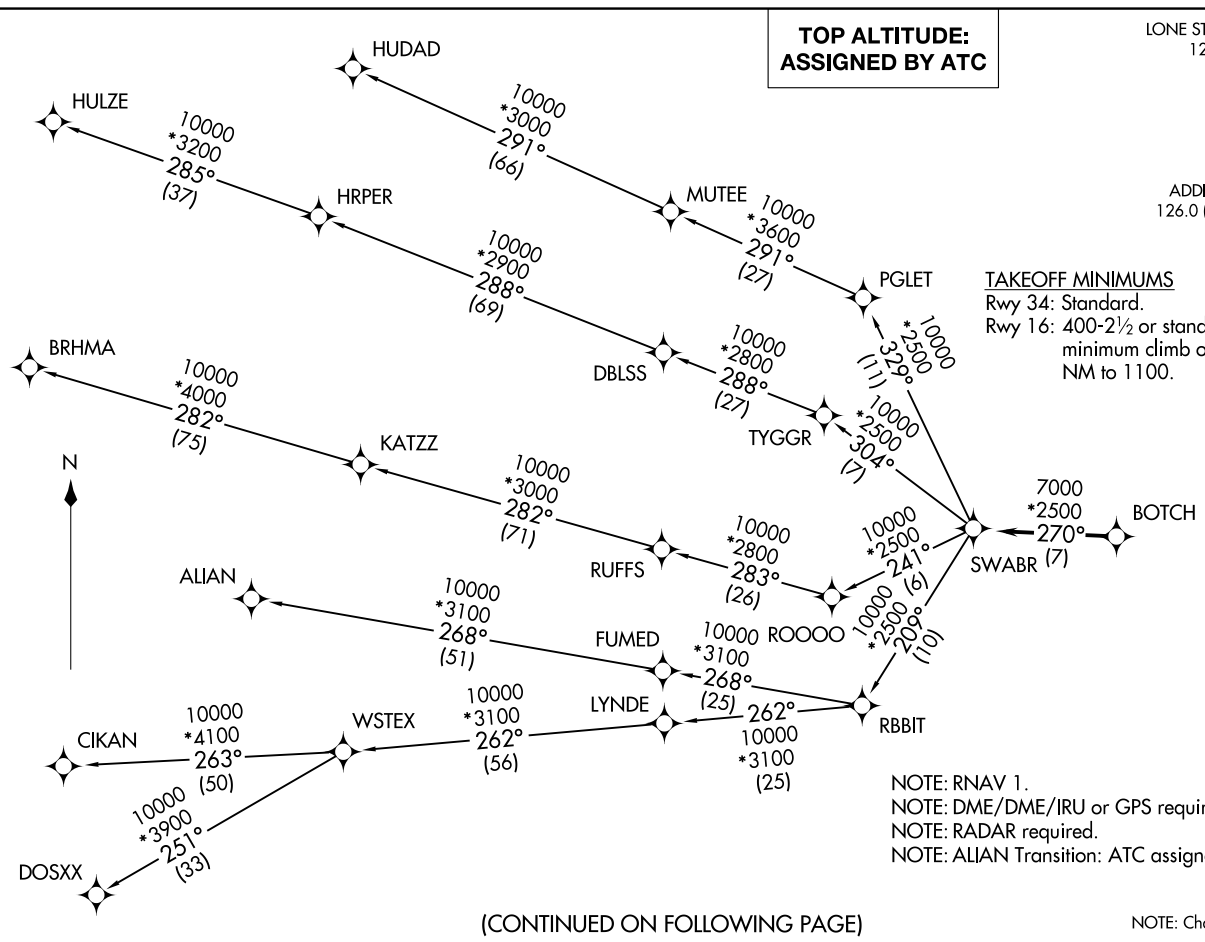
TAKEOFF MINIMUMS
Rwy 34: Standard.
Rwy 16: 400-2½ or standard with
minimum climb of 325' per
NM to 1100.

AL-788 (FAA)

ADDITION (ADS)
DALLAS, TEXAS

(CONTINUED ON FOLLOWING PAGE)

NOTE: Chart not to scale.



NOTE: RNAV 1.
NOTE: DME/DME/IRU or GPS required.
NOTE: RADAR required.
NOTE: ALIAN Transition: ATC assigned only.

DALLAS, TEXAS
ADDITION (ADS)

SWABR ONE DEPARTURE (RNAV)



DEPARTURE ROUTE DESCRIPTION

When entering controlled airspace, fly heading assigned by ATC, expect vectors to BOTCH, then on track 270° to SWABR, then on assigned transition. Maintain ATC assigned altitude, expect filed altitude 10 minutes after departure.

ALIAN TRANSITION (SWABR1.ALIAN)

BRHMA TRANSITION (SWABR1.BRHMA)

CIKAN TRANSITION (SWABR1.CIKAN)

DOSXX TRANSITION (SWABR1.DOSXX)

HUDAD TRANSITION (SWABR1.HUDAD)

HULZE TRANSITION (SWABR1.HULZE)

WSTEX TRANSITION (SWABR1.WSTEX)

SC-2, 20 MAR 2025 to 17 APR 2025

SC-2, 20 MAR 2025 to 17 APR 2025