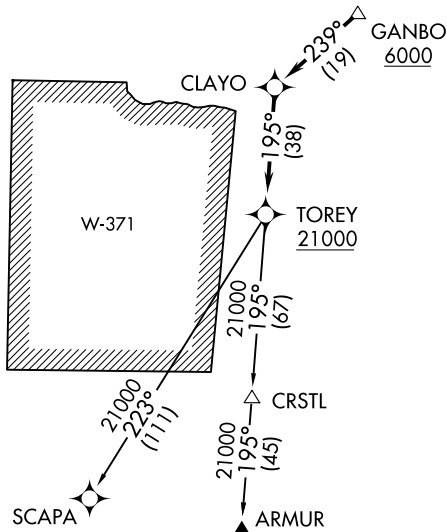
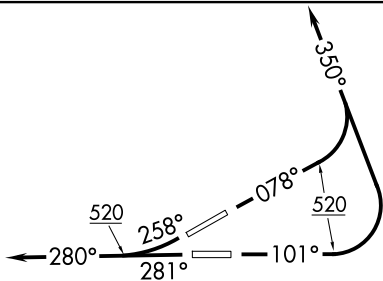


# GANBO ONE DEPARTURE (RNAV)

D-ATIS 125.8  
 CLNC DEL  
 126.4 284.6  
 CPDLC  
 SAN JUAN TOWER  
 132.05 257.8  
 GND CON  
 121.9 348.6  
 SAN JUAN DEP CON  
 119.4 269.2 (West & SW)  
 120.9 290.2 (North & East)



### TAKEOFF MINIMUMS

Rwys 8, 10, 26, 28: Standard.  
 Minimum obstacle climb of 390' per NM to 4900. ATC climb of 420' per NM to 6000.

- NOTE: GPS Required.
- NOTE: For Turbojet aircraft only.
- NOTE: RNAV 1.
- NOTE: RADAR required.
- NOTE: ATC climb of 264' per NM to 21000.
- NOTE: If unable to accept climb rates, advise ATC on initial contact.

NOTE: Chart not to scale.

### DEPARTURE ROUTE DESCRIPTION

- TAKEOFF RUNWAY 8:** Climb heading 078° to 520, then climbing left turn heading 350° or as assigned by ATC, expect vectors to GANBO, then via depicted route to TOREY. Thence. . . .
- TAKEOFF RUNWAY 10:** Climb heading 101° to 520, then climbing left turn heading 350° or as assigned by ATC, expect vectors to GANBO, then via depicted route to TOREY. Thence. . . .
- TAKEOFF RUNWAY 26:** Climb heading 258° to 520, continue climb heading 280° or as assigned by ATC, expect vectors to GANBO, then via depicted route to TOREY. Thence. . . .
- TAKEOFF RUNWAY 28:** Climb heading 281° to 520, continue climb heading 280° or as assigned by ATC, expect vectors to GANBO, then via depicted route to TOREY. Thence. . . .

. . . .via assigned transition. Maintain 5000 unless assigned lower altitude. Expect clearance to FL280, or requested altitude if lower, ten minutes after departure.

ARMUR TRANSITION (GANBO1.ARMUR):  
 SCAPA TRANSITION (GANBO1.SCAPA):

# GANBO ONE DEPARTURE (RNAV)

SE-3, 20 MAR 2025 to 17 APR 2025

SE-3, 20 MAR 2025 to 17 APR 2025