

APP CRS	Rwy ldg	8016
281°	TDZE	10
	Apt Elev	10

RNAV (GPS) RWY 28

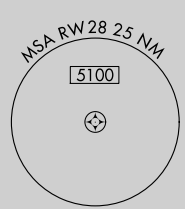
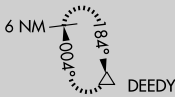
LUIS MUNOZ MARIN INTL (SJU)(TJSJ)

RNP APCH.

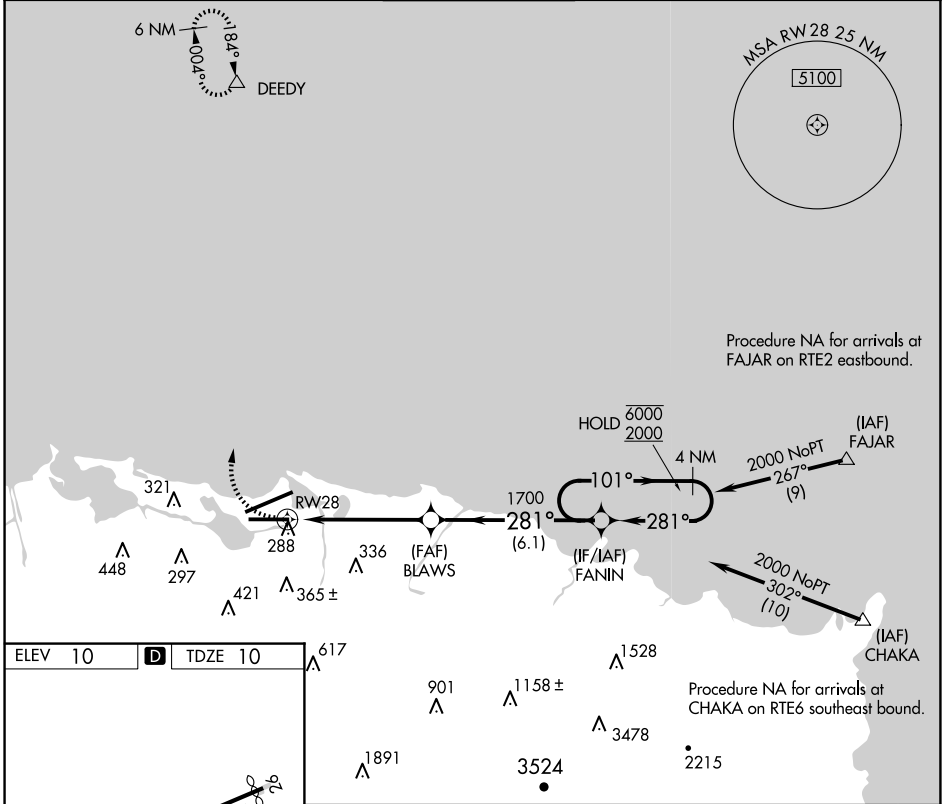
▼ Rwy 28 helicopter visibility reduction below 3/4 SM NA.

MISSED APPROACH: Climbing right turn to 3000 direct DEEDY and hold.

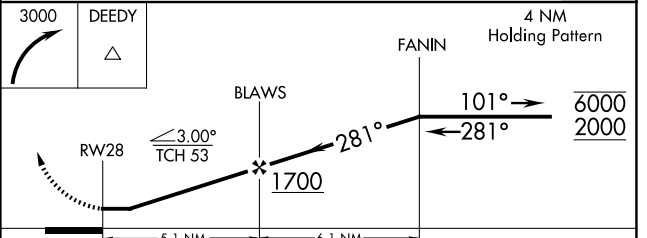
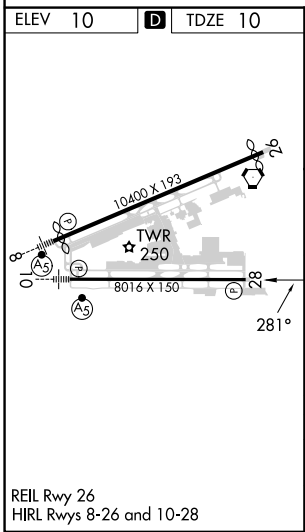
D-ATIS	SAN JUAN APP CON	SAN JUAN TOWER	GND CON	CLNC DEL	CPDLC
125.8	119.4 269.2 (WEST & SW) 120.9 290.2 (NORTH & EAST)	132.05 257.8	121.9 348.6	126.4 284.6	



Procedure NA for arrivals at FAJAR on RTE2 eastbound.



Procedure NA for arrivals at CHAKA on RTE6 southeast bound.



CATEGORY	A	B	C	D
LNAV MDA	540-1	530 (600-1)	540-1½	530 (600-1½)
C CIRCLING	600-1	590 (600-1)	740-2 730 (800-2)	920-3 910 (1000-3)

REIL Rwy 26
HIRL Rwy 8-26 and 10-28

SE-3, 20 MAR 2025 to 17 APR 2025

SE-3, 20 MAR 2025 to 17 APR 2025