

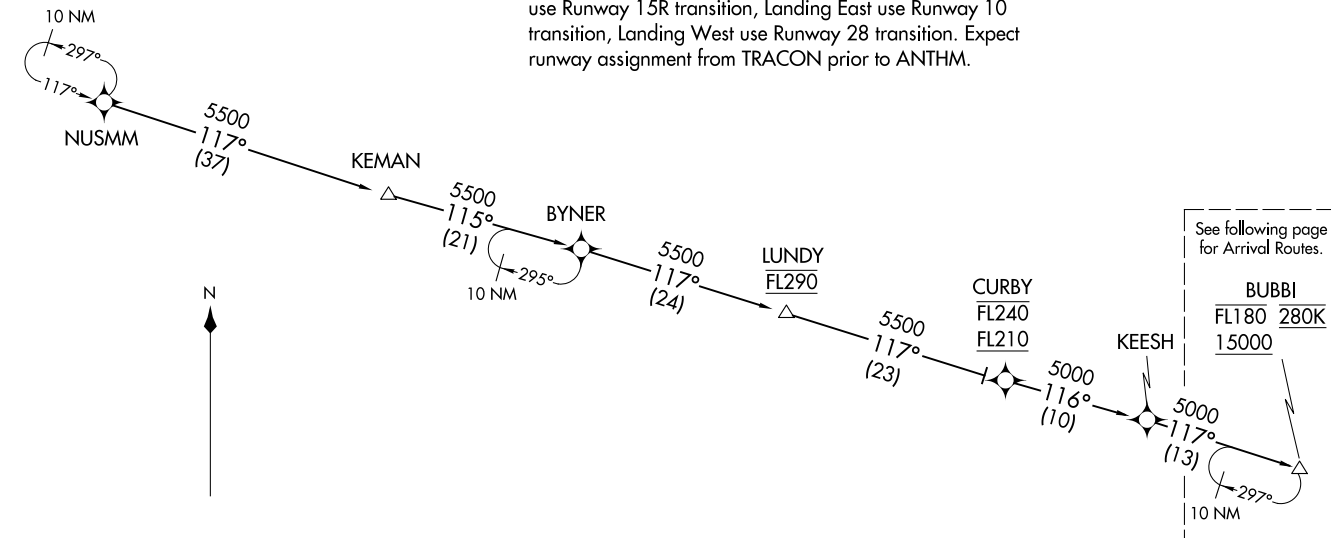
RNAV 1 - DME/DME/IRU or GPS.  
RADAR required.

- NOTE: Jet aircraft only.
- NOTE: PROHIBITED AREA (P-56) 1.5 NM north of DCA avoid surface to 18000 MSL.
- NOTE: Landing North use Runway 33L transition, Landing South use Runway 15R transition, Landing East use Runway 10 transition, Landing West use Runway 28 transition. Expect runway assignment from TRACON prior to ANTHM.

POTOMAC APP CON  
133.85 254.25  
BWI D-ATIS  
115.1 127.8  
MTN ATIS  
124.925

ANTHM FIVE ARRIVAL (RNAV) Transition Routes  
 (BUBBI, ANTHM5) 26DEC24  
 BALTIMORE, MARYLAND

(BUBBI, ANTHM5) 24361  
 ANTHM FIVE ARRIVAL (RNAV) Transition Routes  
 AL-804 (FAA)  
 BALTIMORE, MARYLAND



See following page for Arrival Routes.

BUBBI
FL180 280K
15000

KEESH TRANSITION (KEESH.ANTHM5)  
KEMAN TRANSITION (KEMAN.ANTHM5)  
NUSMM TRANSITION (NUSMM.ANTHM5)

(CONTINUED ON FOLLOWING PAGES)

NOTE: Chart not to scale.

ANTHM FIVE ARRIVAL (RNAV) Arrival Routes  
(BUBBI,ANTHM5) 26DEC24

(BUBBI,ANTHM5) 24361  
ANTHM FIVE ARRIVAL (RNAV) Arrival Routes  
AL-804 (FAA)  
BALTIMORE, MARYLAND

RNAV 1 - DME/DME/IRU or GPS.  
RADAR required.

POTOMAC APP CON  
133.85 254.25  
BWI D-ATIS  
115.1 127.8  
MTN ATIS  
124.925

ARYIA  
11000 250K

KBWI Ldg Rwy 15L/R

EAGLL  
13000  
12000

BUBBI  
FL180 280K  
15000

FLAAG  
7000  
6000

ROKTT  
11000 250K

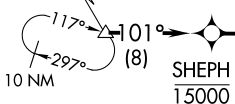
OLBAY  
9000 250K

ANTHM

JABRR  
11000 250K

STARZ  
5000 4000  
210K

CRABZ  
6000 5000



SHEPH  
15000

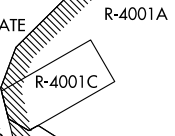
ANTHM

JABRR  
11000 250K

FLAAG  
7000 6000

OLBAY  
9000 250K

MARTIN STATE



FINNZ  
5000 210K

SPNGL  
4000

BRAVY  
4000 210K

STRPS  
4000 210K

KEYEY  
4000 210K

ASHOR  
4000

GRAMZ  
4000

KBWI Ldg Rwy 10

BALTIMORE/  
WASHINGTON INTL  
THURGOOD MARSHALL

RAAYY  
4000

GRAMZ  
4000

- NOTE: Jet aircraft only.
- NOTE: PROHIBITED AREA (P-56) 1.5 NM north of DCA avoid surface to 18000 MSL.
- NOTE: Landing North use Runway 33L transition, Landing South use Runway 15R transition, Landing East use Runway 10 transition, Landing West use Runway 28 transition. Expect runway assignment from TRACON prior to ANTHM.

P-56B



KBWI Ldg Rwy 33L/R

HOOOK  
4000

Ldg KMTN

KBWI Ldg Rwy 28

(CONTINUED ON FOLLOWING PAGE)

NOTE: Chart not to scale.

BALTIMORE, MARYLAND

ARRIVAL ROUTE DESCRIPTION

BWI: From BUBBI on track 101° to cross SHEPH at or below 15000, then on track 101° to cross EAGLL between 12000 and 13000, then on track 102° to ANTHM.

LANDING BWI RUNWAY 10: From ANTHM on track 098° to cross ROKTT at 11000 and at 250K, then on track 098° to cross FLAAG between 6000 and 7000, then on track 178° to cross STARZ between 4000 and 5000 and at 210K, then on track 210° to cross STRPS at 4000 and at 210K, then on track 248° to BRAYV, then on track 285° to cross SPNGL at 4000, then on heading 285°. Expect RADAR vectors to final approach course.

LANDING BWI RUNWAY 15L/R: From ANTHM on track 085° to cross ARYIA at 11000 and at 250K, then on heading 070°. Expect RADAR vectors to final approach course.

LANDING BWI RUNWAY 28: From ANTHM on track 104° to cross JABRR at 11000 and at 250K, then on track 104° to cross OLBAY at or below 9000 and at 250K, then on track 120° to cross CRABZ between 5000 and 6000, then on track 160° to cross FINNZ at 5000 and at 210K, then on track 143° to cross ASHOR at 4000, then on track 106° to cross GRAMZ at 4000, then on track 106°. Expect RADAR vectors to final approach course.

LANDING BWI RUNWAY 33L/R: From ANTHM on track 104° to cross JABRR at 11000 and at 250K, then on track 104° to cross OLBAY at or below 9000 and at 250K, then on track 120° to cross CRABZ between 5000 and 6000, then on track 160° to cross FINNZ at 5000 and at 210K, then on track 205° to cross KEEYY at 4000 and at 210K, then on track 204° to cross ROAPS at 4000, then on track 155° to cross HOOOK at 4000, then on track 155°. Expect RADAR vectors to final approach course.

LANDING MTN: From BUBBI on track 101° to cross SHEPH at or below 15000, then on track 101° to cross EAGLL between 12000 and 13000, then on track 102° to ANTHM, then on track 104° to cross JABRR at 11000 and at 250K, then on track 104° to cross OLBAY at or below 9000 and at 250K, then on track 120° to cross CRABZ between 5000 and 6000, then on track 160° to cross FINNZ at 5000 and at 210K, then on track 160° to cross RAAYY at 4000, then on track 160°. Expect RADAR vectors to final approach course.

NE-3, 20 MAR 2025 to 17 APR 2025

NE-3, 20 MAR 2025 to 17 APR 2025