

LOC I-BAL <b>109.7</b>	APP CRS <b>105°</b>	Rwy Ldg <b>9953</b>
		TDZE <b>143</b>
		Apt Elev <b>143</b>

BALTIMORE/  
WASHINGTON INTL THURGOOD MARSHALL (BWI)

# ILS RWY 10 (CAT II & III)

RADAR required for procedure entry.  
DME or RADAR required.

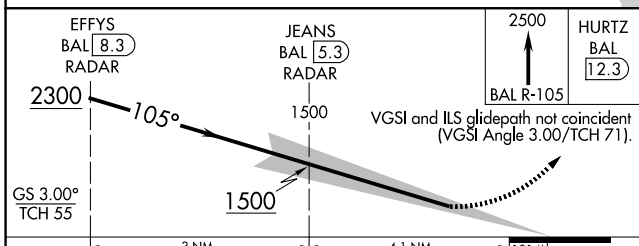
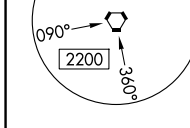
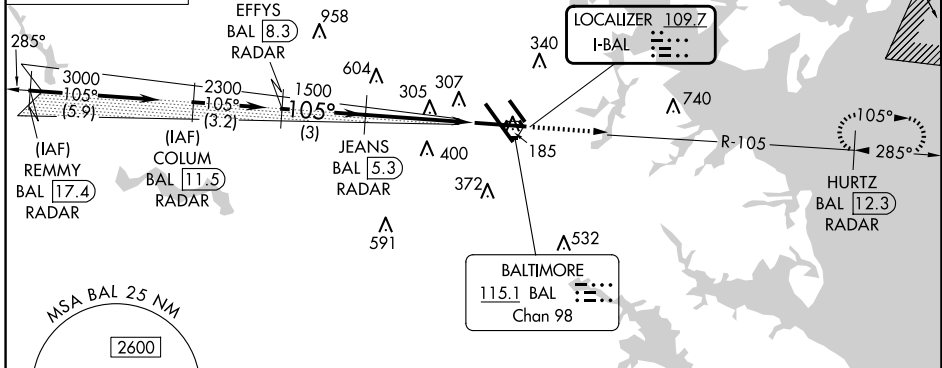


MISSED APPROACH: Climb to 2500 on BAL VORTAC  
R-105 to HURTZ/BAL 12.3 DME/RADAR and hold.

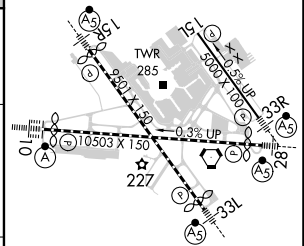
D-ATIS <b>115.1 127.8</b>	POTOMAC APP CON <b>119.0 282.275</b> (020°-100°) <b>124.55 317.425</b> (101°-130°)	<b>119.7 290.475</b> (131°-180°) <b>128.7 307.9</b> (181°-019°)	<b>BALTIMORE TOWER</b>	GND CON <b>121.9</b>	CLNC DEL <b>118.05</b>
------------------------------	--	--	------------------------	-------------------------	---------------------------

ALTERNATE MISSED  
APCH FIX

WESTMINSTER  
EMI ---  
117.9  
Chan 126



ELEV 143	<b>D</b> TDZE 143
----------	-------------------



CATEGORY	A	B	C	D
S-ILS 10	CAT II RA 105/12 100 DA 243			
S-ILS 10	CAT III RVR 06			

## CATEGORY II & III ILS - SPECIAL AIRCREW & AIRCRAFT CERTIFICATION REQUIRED

TDZ/CL Rwy 10 and 33L  
REIL Rwy 15L and 33R  
HIRL all Rwy

# ILS RWY 10 (CAT II & III)

NE-3, 20 MAR 2025 to 17 APR 2025

NE-3, 20 MAR 2025 to 17 APR 2025