


ILS RWY 33L (SA CAT I & II)

BALTIMORE/WASHINGTON INTL THURGOOD MARSHALL (BWI)

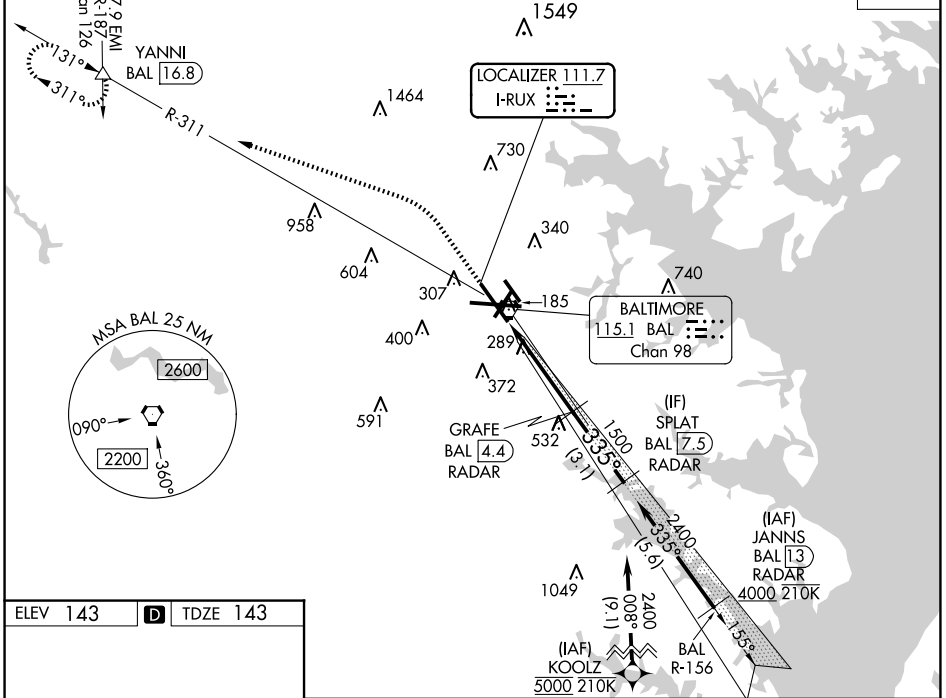
LOC I-RUX 111.7	APP CRS 335°	Rwy ldg TDZE Apt Elev	8301 143 143
---------------------------	------------------------	-----------------------------	---

RNP APCH - GPS. From KOOLZ.
RADAR required for procedure entry. DME or RADAR required.

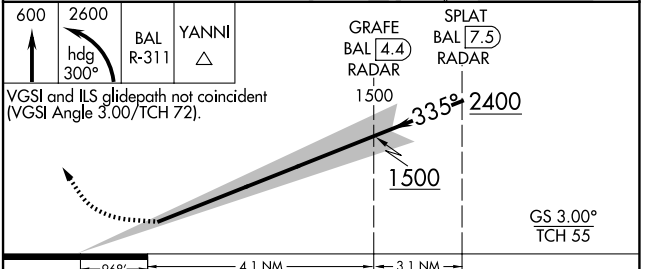
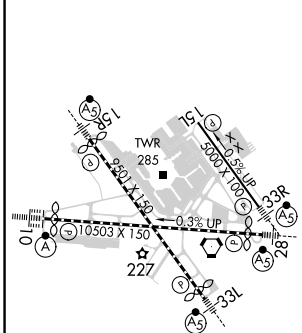
MAISR  MISSED APPROACH: Climb to 600 then climbing left turn to 2600 on heading 300° and BAL VORTAC R-311 to YANNI INT/ BAL 16.8 DME and hold.

Simultaneous approach authorized with ILS or LOC Rwy 33R. DME from BAL VORTAC. DME use requires simultaneous reception of I-RUX and BAL DME. SA Cat I & II: Requires specific OPSPEC, MSPEC, or LOA approval.

D-ATIS 115.1 127.8	119.0 282.275 124.55 317.425	POTOMAC APP CON (020°-100°) 119.7 290.475 (131°-180°) (101°-130°) 128.7 307.9 (181°-019°)	BALTIMORE TOWER 119.4 257.8	GND CON 121.9	CLNC DEL 118.05
------------------------------	---	---	---------------------------------------	-------------------------	---------------------------



ELEV 143	D	TDZE 143
----------	----------	----------



CATEGORY	A	B	C
S-ILS 33L	SA CAT I RA 185/14	150	DA 293
S-ILS 33L	SA CAT II RA 128/12	100	DA 243

SA CATEGORY I & II ILS - SPECIAL AIRCREW & AIRCRAFT CERTIFICATION REQUIRED

TDZ/CL Rwy 10 and 33L
REIL Rwy 15L and 33R
HIRL all Rwy

ILS RWY 33L (SA CAT I & II)

NE-3, 20 MAR 2025 to 17 APR 2025

NE-3, 20 MAR 2025 to 17 APR 2025