

LOC I-FND <b>111.7</b>	APP CRS <b>155°</b>	Rwy Idg TDZE Apt Elev	<b>8301</b> <b>138</b> <b>143</b>
---------------------------	------------------------	-----------------------------	---

BALTIMORE/  
WASHINGTON INTL THURGOOD MARSHALL (BWI)  
**ILS or LOC RWY 15R**

RNP APCH - GPS. From HUEYP or ZARTZ.

DME or RADAR required. RADAR required for procedure entry at KYILO or BMORE.

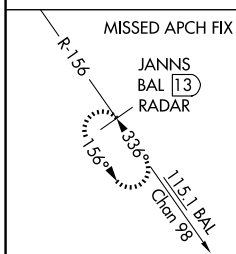
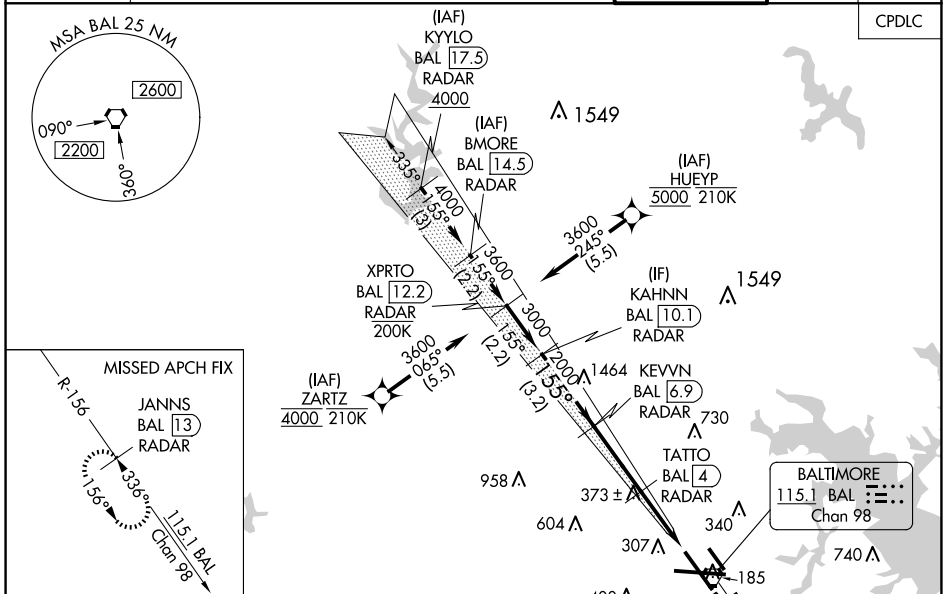
- Simultaneous approach authorized with Rwy 15L. DME from BAL VORTAC.
- For inop ALS, increase LOC Cat C/D visibility to 1 3/8 SM.
- \* RVR 1800 authorized with use of FD or AP or HUD to DA.



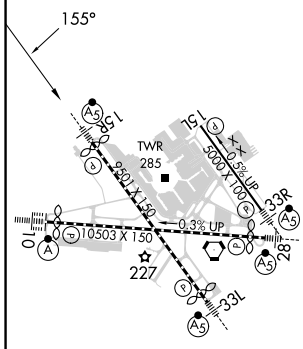
MISSED APPROACH: Climb to 2500 on BAL VORTAC R-156 to JANNIS/BAL 13 DME/RADAR and hold.

D-ATIS <b>115.1 127.8</b>	POTOMAC APP CON (020°-100°) <b>119.0 282.275</b> (101°-130°) <b>124.55 317.425</b>	(131°-180°) <b>119.7 290.475</b> (181°-019°) <b>128.7 307.9</b>	BALTIMORE TOWER <b>119.4 257.8</b>	GND CON <b>121.9</b>	CLNC DEL <b>118.05</b>
------------------------------	--	--	---------------------------------------	-------------------------	---------------------------

CPDLC



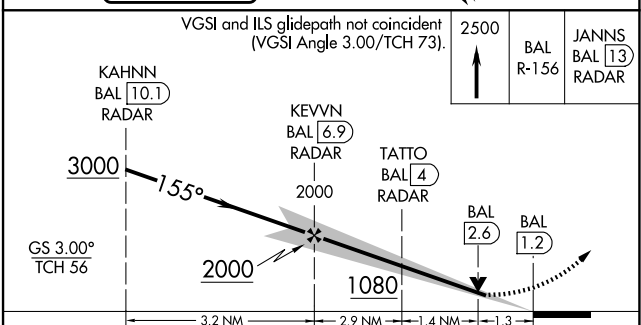
ELEV 143	<b>D</b>	TDZE 138
----------	----------	----------



TDZ/CL Rwy 10 and 33L  
REIL Rwy 15L and 33R  
HIRL all Rwy

FAF to MAP 5.7 NM

Knots	60	90	120	150	180
Min:Sec	5:42	3:48	2:51	2:17	1:54



CATEGORY	A	B	C	D
S-ILS 15R*	338/24 200 (200-1/2)			
S-LOC 15R	640/24	502 (500-1/2)	640/55	502 (500-1)
<b>C</b> CIRCLING	640-1 497 (500-1)	660-1 517 (600-1)	700-1 1/2 557 (600-1 1/2)	880-2 1/4 737 (800-2 1/4)

NE-3, 20 MAR 2025 to 17 APR 2025

NE-3, 20 MAR 2025 to 17 APR 2025