

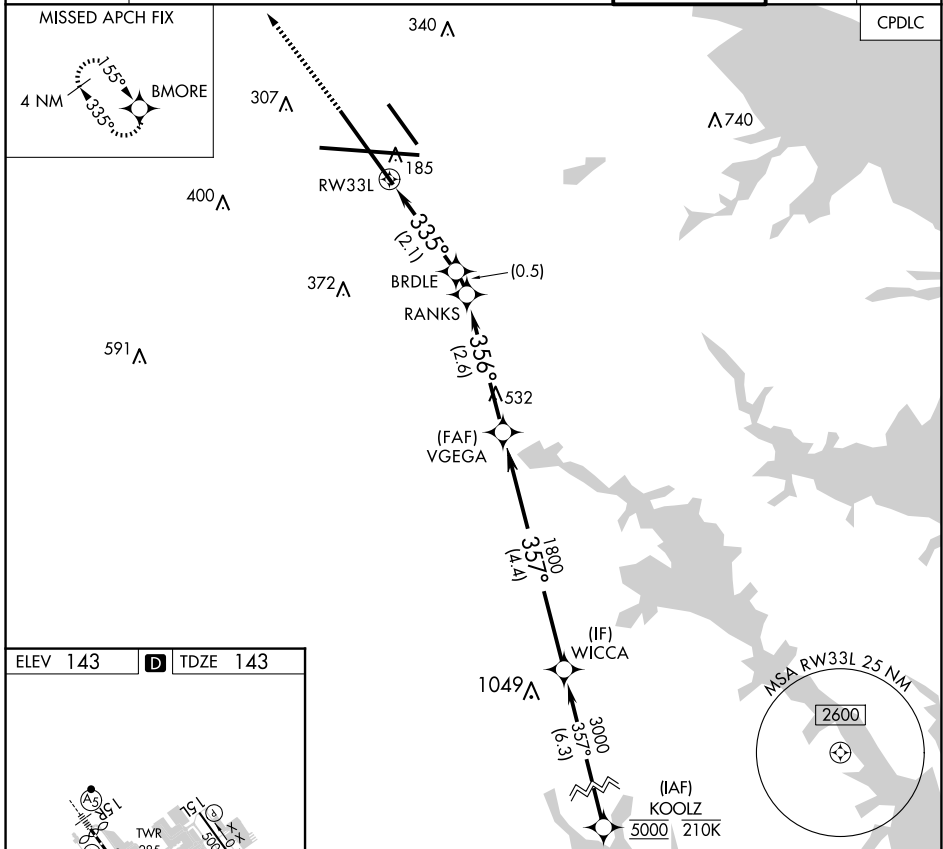
# RNAV (RNP) X RWY 33L

BALTIMORE/WASHINGTON INTL THURGOOD MARSHALL (BWI)

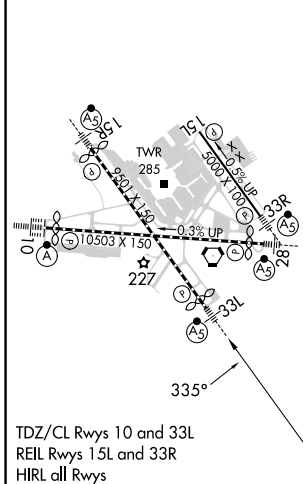
APP CRS <b>335°</b>	Rwy Idg TDZE Apt Elev	<b>8301</b> <b>143</b> <b>143</b>
------------------------	-----------------------------	---

RNP AR APCH - GPS, RF.	MALSR	MISSED APPROACH: Climb to 3000 direct BMORE and hold.
▼ For uncompensated Baro-VNAV systems, procedure NA below -11°C or above 54°C.		

D-ATIS <b>115.1 127.8</b>	POTOMAC APP CON (020°-100°) <b>119.7 290.475</b> (131°-180°) (101°-130°) <b>128.7 307.9</b> (181°-019°)	BALTIMORE TOWER <b>119.4 257.8</b>	GND CON <b>121.9</b>	CLNC DEL <b>118.05</b>
------------------------------	---	---------------------------------------	-------------------------	---------------------------



ELEV 143	<b>D</b>	TDZE 143
----------	----------	----------



3000	BMORE	VGS1 and RNAV glidepath not coincident (VGS1 Angle 3.00/TCH 72).		WICCA	
↑		BRDLE	RANKS	VEGEGA	
		839	986	1800	
				357°	
				1800	
				3000	
				GP 3.00°	
				TCH 55	
		2.1 NM	0.5 NM	2.6 NM	4.4 NM
CATEGORY	A	B	C	D	
RNP 0.30 DA	479/26 336 (400-1/2)				

**AUTHORIZATION REQUIRED**

NE-3, 20 MAR 2025 to 17 APR 2025

NE-3, 20 MAR 2025 to 17 APR 2025