

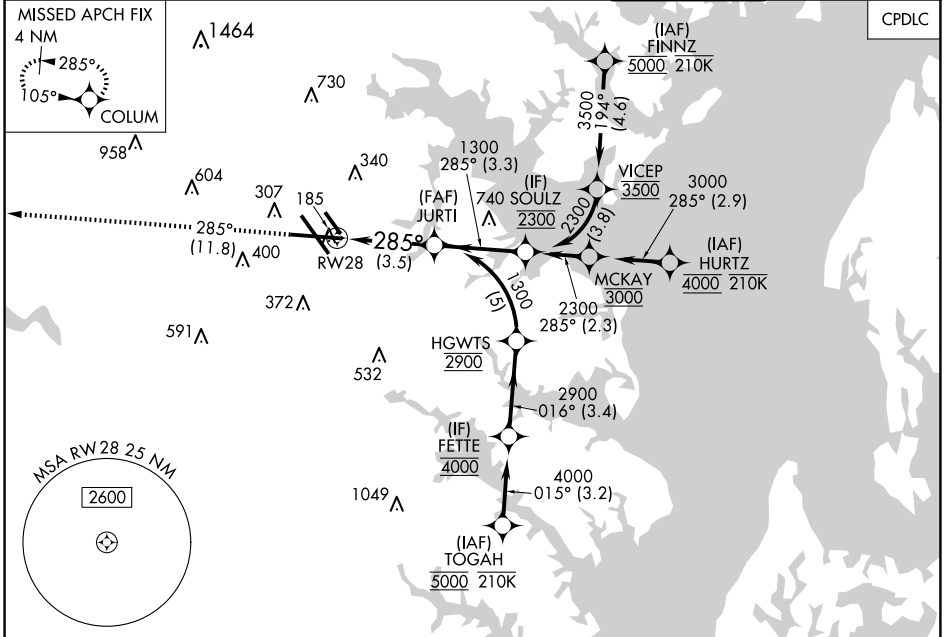
APP CRS	Rwy Idg	<b>9803</b>
<b>285°</b>	TDZE	<b>143</b>
	Apt Elev	<b>143</b>

# RNAV (RNP) Z RWY 28

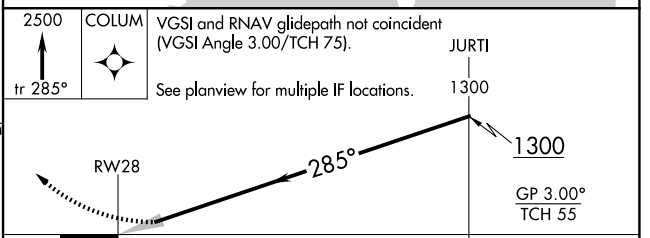
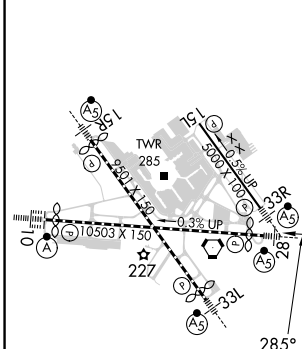
BALTIMORE/WASHINGTON INTL THURGOOD MARSHALL (BWI)

RNP AR APCH - GPS.	MALSR	MISSED APPROACH: Climb to 2500 on track 285° to COLUM and hold.
▼ For uncompensated Baro-VNAV systems, procedure NA below -11°C or above 54°C. For inop ALS, increase RNP 0.30 all Cals visibility to RVR 5500.		

D-ATIS	POTOMAC APP CON	BALTIMORE TOWER	GND CON	CLNC DEL
<b>115.1 127.8</b>	(020°-100°) <b>119.7 290.475</b> (131°-180°) (101°-130°) <b>128.7 307.9</b> (181°-019°)	<b>119.4 257.8</b>	<b>121.9</b>	<b>118.05</b>



ELEV 143	<b>D</b>	TDZE 143
----------	----------	----------



CATEGORY	A	B	C	D
RNP 0.30 DA		521/35	378 (400-%)	

**AUTHORIZATION REQUIRED**

NE-3, 20 MAR 2025 to 17 APR 2025

NE-3, 20 MAR 2025 to 17 APR 2025