

RNAV (RNP) Z RWY 33L

BALTIMORE/WASHINGTON INTL THURGOOD MARSHALL (BWI)

APP CRS 335°	Rwy Idg TDZE Apt Elev	8301 143 143
------------------------	-----------------------------	---

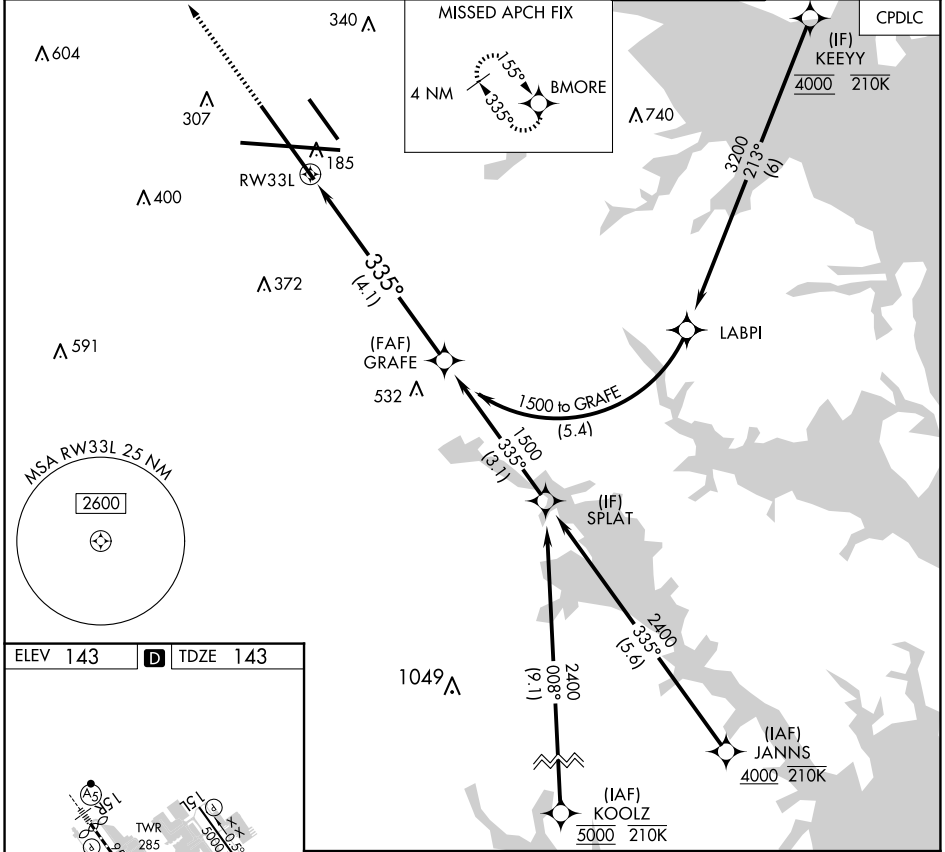
RNP APCH - GPS. From KEEYY: RF.

▼ For uncompensated Baro-VNAV systems, procedure NA below -11°C or above 54°C. For inop ALS, increase RNP 0.30 all Cats visibility to RVR 5500.

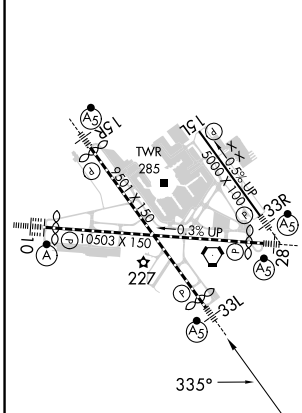
MALSR

MISSED APPROACH: Climb to 3000 direct BMORE and hold.

D-ATIS 115.1 127.8	POTOMAC APP CON (020°-100°) 119.7 290.475 (131°-180°) (101°-130°) 128.7 307.9 (181°-019°)	BALTIMORE TOWER 119.4 257.8	GND CON 121.9	CLNC DEL 118.05
------------------------------	---	---------------------------------------	-------------------------	---------------------------



ELEV 143	D	TDZE 143
----------	----------	----------



TDZ/CL Rwy 10 and 33L
REIL Rwy 15L and 33R
HIRL all Rwy

3000	BMORE	See planview for multiple IF locations. VGSI and RNAV glidepath not coincident (VGSI Angle 3.00/TCH 72).	GRAFE 1500
↑	✦		
RW33L			
335°			
GP 3.00° TCH 55			
4.1 NM			
CATEGORY	A	B	C
RNP 0.30 DA	496/30 353 (400-5%)		

AUTHORIZATION REQUIRED

RNAV (RNP) Z RWY 33L

NE-3, 20 MAR 2025 to 17 APR 2025

NE-3, 20 MAR 2025 to 17 APR 2025