

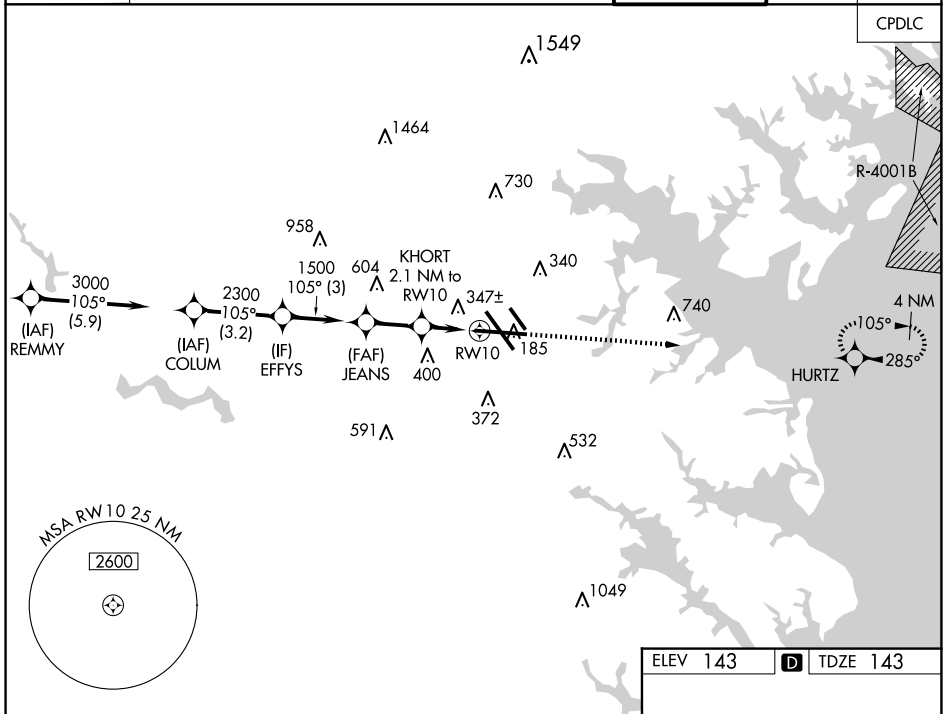
WAAS CH 53707 W10A	APP CRS 105°	Rwy Idg TDZE 143 Apt Elev 143	9953
--	------------------------	---	-------------

RNAV (GPS) Y RWY 10

BALTIMORE/WASHINGTON INTL THURGOOD MARSHALL (BWI)

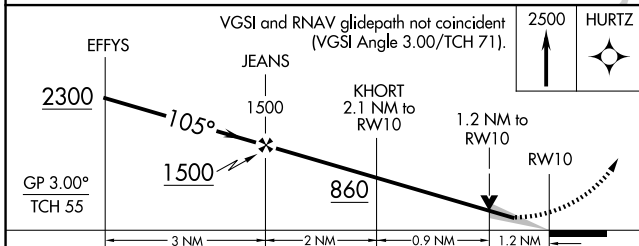
RNP APCH - GPS.	ALSIF-2	MISSED APPROACH: Climb to 2500 direct HURTZ and hold.
<p>▼ For uncompensated Baro-VNAV systems, LNAV/VNAV</p> <p>▲ NA below -11°C or above 54°C.</p>		

D-ATIS 115.1 127.8	POTOMAC APP CON (020°-100°) 119.0 282.275 (101°-130°) 124.55 317.425	(131°-180°) 119.7 290.475 (181°-019°) 128.7 307.9	BALTIMORE TOWER 119.4 257.8	GND CON 121.9	CLNC DEL 118.05
------------------------------	--	--	---------------------------------------	-------------------------	---------------------------



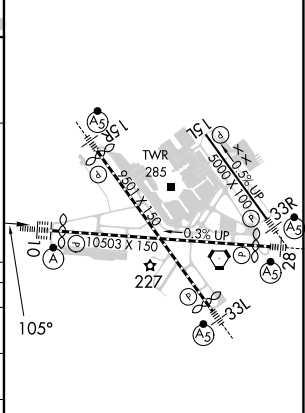
NE-3, 20 MAR 2025 to 17 APR 2025

NE-3, 20 MAR 2025 to 17 APR 2025



ELEV 143	D TDZE 143
----------	-------------------

CATEGORY	A	B	C	D
LPV DA	343/18 200 (200-1/2)			
LNAV/VNAV DA	600/45 457 (500-7/8)			
LNAV MDA	600/24 457 (500-1/2)	600/45 457 (500-7/8)		
C CIRCLING	640-1 497 (500-1)	660-1 517 (600-1)	700-1 1/2 557 (600-1 1/2)	880-2 1/4 737 (800-2 1/4)



TDZ/CL Rwy 10 and 33L
REIL Rwy 15L and 33R
HIRL all Rwy

RNAV (GPS) Y RWY 10