

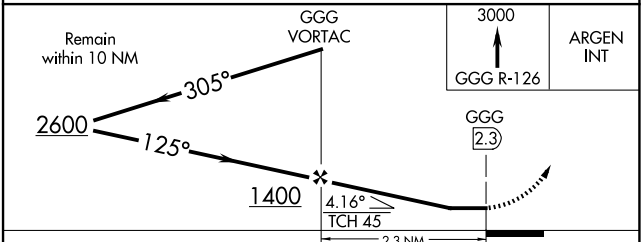
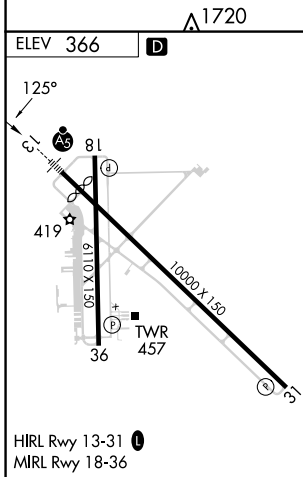
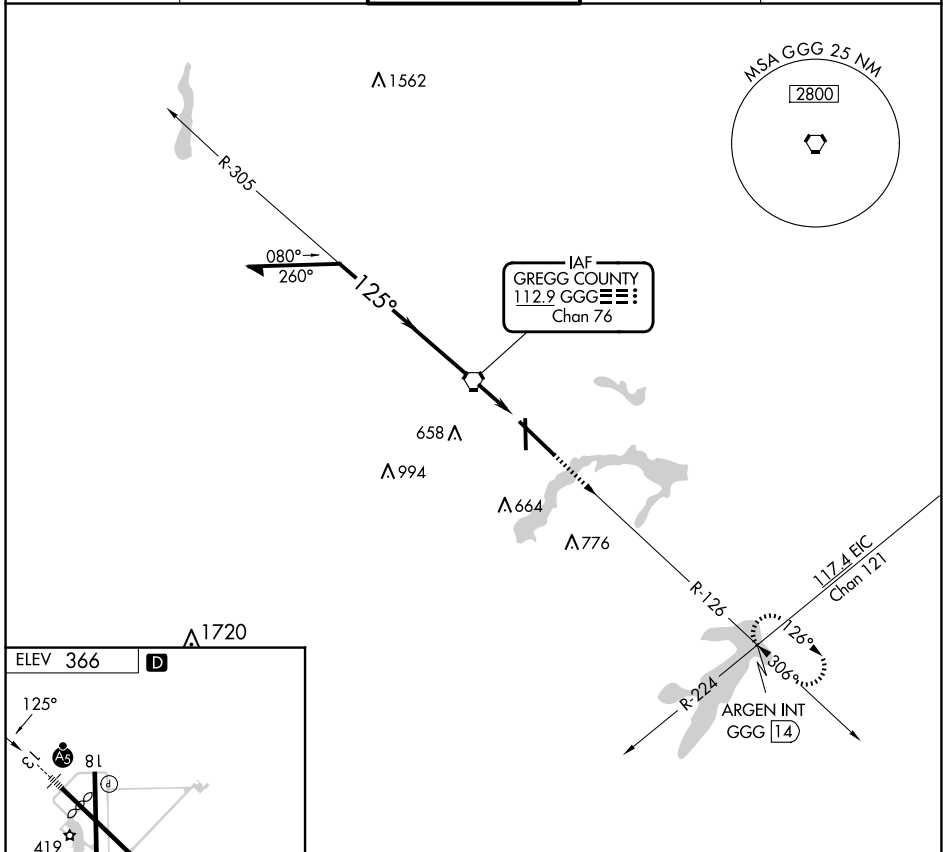
VORTAC GGG 112.9 Chan 76	APP CRS 125°	Rwy Idg TDZE Apt Elev	N/A N/A 366
--	------------------------	-----------------------------	--

VOR-A
EAST TEXAS RGNL (GGG)

When local altimeter setting not received, use Gilmer altimeter setting and increase all MDA 60 feet and Circling visibility Cat C/D ¼ SM.

MISSED APPROACH: Climb to 3000 via GGG VORTAC R-126 to ARGEN Int/GGG 14 DME and hold.

ATIS 119.65	LONGVIEW APP CON* 124.675 257.975	EASTEX TOWER* 119.2 (CTAF) 377.05	GND CON 121.6	UNICOM 122.95
-----------------------	---	---	-------------------------	-------------------------



FAF to MAP 2.3 NM					
Knots	60	90	120	150	180
Min:Sec	2:18	1:32	1:09	0:55	0:46
CATEGORY	A	B	C	D	
CIRCLING	860-1	494 (500-1)	980-1¾ 614 (700-1¾)	1080-2¼ 714 (800-2¼)	

SC-2, 20 MAR 2025 to 17 APR 2025

SC-2, 20 MAR 2025 to 17 APR 2025