

LOC I- LFK 111.3	APP CRS 073°	Rwy Idg TDZE Apt Elev	5400 287 296
-----------------------------------	------------------------	-----------------------------	---

ILS or LOC RWY 7

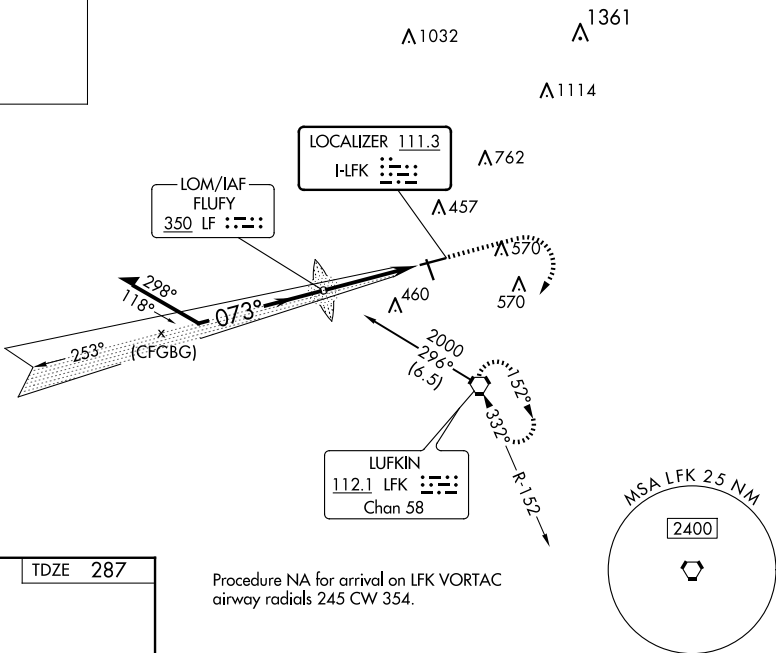
ANGELINA COUNTY (L^{FLK})

NA Circling Rwy 16, 25 NA at night.	MALS AS	MISSED APPROACH: Climb to 800 then climbing right turn to 2000 direct LFK VORTAC and hold, continue climb-in-hold.
--	------------	--

ASOS 120.625	HOUSTON CENTER 125.175 285.575	UNICOM 123.0 (CTAF)
------------------------	--	-------------------------------

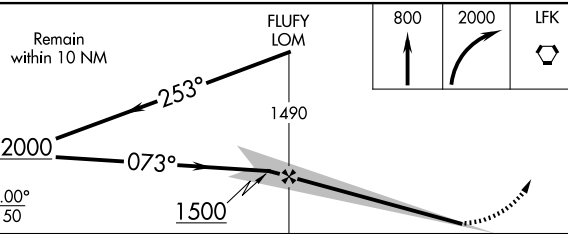
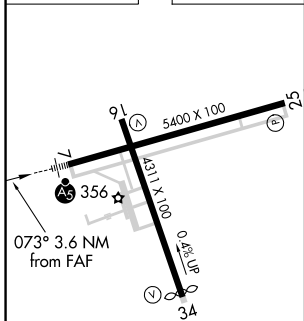
ALTERNATE MISSED APCH

FLUFY
350 LF : :: ::



Procedure NA for arrival on LFK VORTAC airway radials 245 CW 354.

ELEV 296	TDZE 287
----------	----------



CATEGORY	A	B	C	D
S-ILS 7	537-1/2		250 (300-1/2)	
S-LOC 7	680-1/2	393 (400-1/2)	680-5/8	393 (400-5/8)
CIRCLING	740-1 444 (500-1)	760-1 464 (500-1)	880-1 1/2 584 (600-1 1/2)	1140-2 3/4 844 (900-2 3/4)

MIRL Rwy 7-25 and 16-34

FAF to MAP 3.6 NM

Knots	60	90	120	150	180
Min:Sec	3:36	2:24	1:48	1:26	1:12

SC-5, 20 MAR 2025 to 17 APR 2025

SC-5, 20 MAR 2025 to 17 APR 2025