

VORTAC LFK 112.1 Chan 58	APP CRS 332°	Rwy Idg TDZE 286 Apt Elev 296
----------------------------------------------	------------------------	---------------------------------------------------

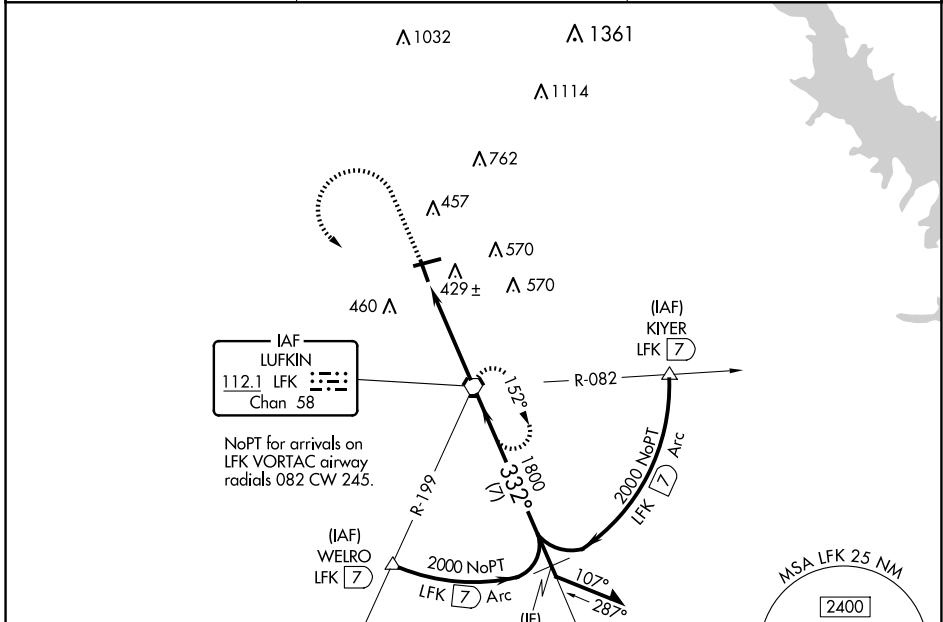
VOR RWY 34

ANGELINA COUNTY (L'FK)

▼ Rwy 34 helicopter visibility reduction below 1 SM NA.
▲ Straight-In Rwy 34 NA at night, Circling to Rwy 16, 25, 34 NA at night.

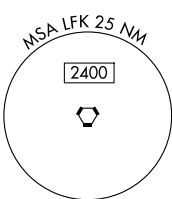
MISSED APPROACH: Climb to 900 then descending left turn to 2000 direct LFK VORTAC and hold.

ASOS 120.625	HOUSTON CENTER 125.175 285.575	UNICOM 123.0 (CTAF) 0
------------------------	------------------------------------------	----------------------------------------

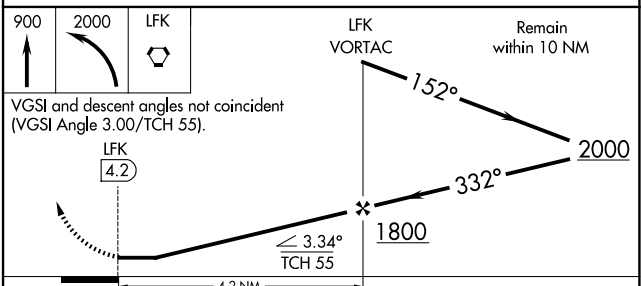
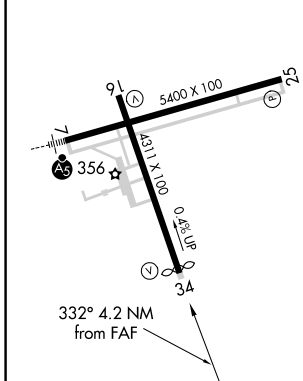


IAF
LUFKIN
112.1 LFK
Chan **58**

NoPT for arrivals on LFK VORTAC airway radials 082 CW 245.



ELEV 296	TDZE 286
-----------------	-----------------



CATEGORY	A	B	C	D
S-34	680-1	394 (400-1)	680-1½	394 (400-1½)
☑ CIRCLING	740-1 444 (500-1)	760-1 464 (500-1)	880-1½ 584 (600-1½)	1140-2¾ 844 (900-2¾)

MIRL Rwy 7-25 and 16-34 0					
FAF to MAP 4.2 NM					
Knots	60	90	120	150	180
Min:Sec	4:12	2:48	2:06	1:41	1:24

SC-5, 20 MAR 2025 to 17 APR 2025

SC-5, 20 MAR 2025 to 17 APR 2025