

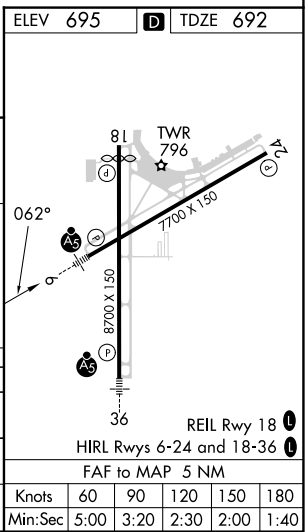
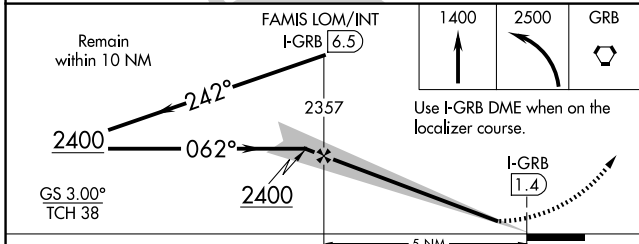
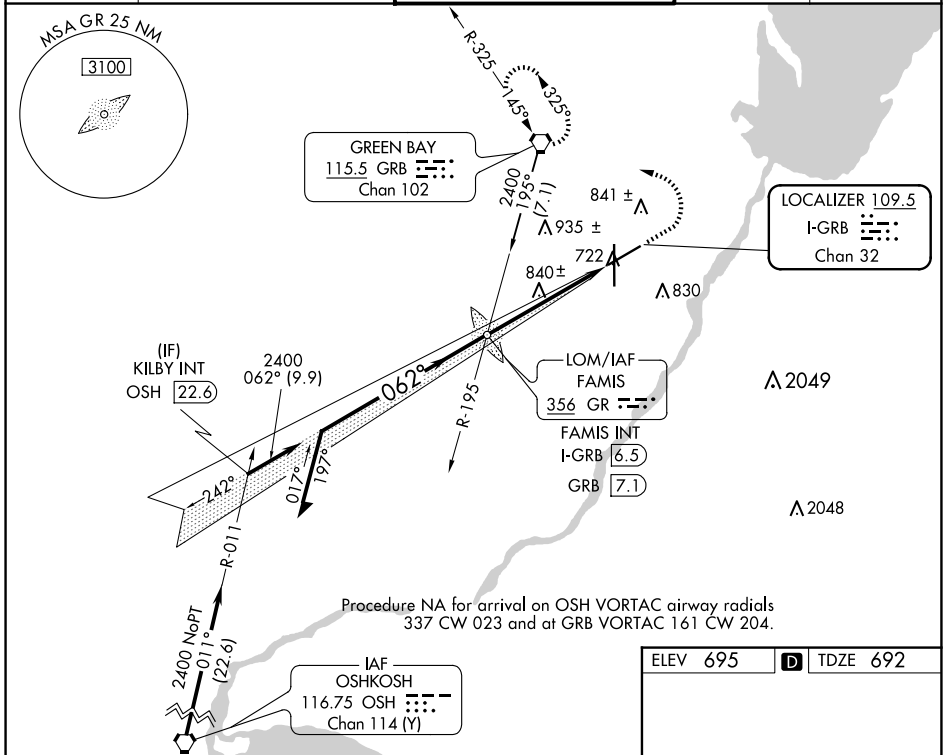
LOC/DME I-GRB 109.5 Chan 32	APP CRS 062°	Rwy Idg TDZE Apf Elev	7699 692 695
---	------------------------	-----------------------------	---

ILS or LOC RWY 6

GREEN BAY/AUSTIN STRAUBEL INTL (GRB)

⚠ For inop ALS, increase S-LOC 6 Cats C/D visibility to 1 3/8 SM. *RVR 1800 authorized with the use of FD or AP or HUD to DA. ASR	MALSR 	MISSED APPROACH: Climb to 1400 then climbing left turn to 2500 direct GRB VORTAC and hold.
--	------------------	---

ATIS 124.1	GREEN BAY APP CON* 119.4 338.2	GREEN BAY TOWER* 118.7(CTAF) 0 257.8	GND CON 121.9	CLNC DEL 121.75
-----------------------------	---	---	--------------------------------	----------------------------------



CATEGORY	A	B	C	D
S-ILS 6 *	892/24 200 (200-1/2)			
S-LOC 6	1200/24 508 (600-1/2)	1200/55	508 (600-1)	
C CIRCLING	1200-1 505 (600-1)	1300-1 3/4 605 (700-1 3/4)	1300-2 605 (700-2)	

EC-3, 20 MAR 2025 to 17 APR 2025

EC-3, 20 MAR 2025 to 17 APR 2025