

LOC/DME I-GRB <b>109.5</b> Chan 32	APP CRS <b>242°</b>	Rwy ldg TDZE Apt Elev	<b>7699</b> <b>682</b> <b>695</b>
--	------------------------	-----------------------------	---

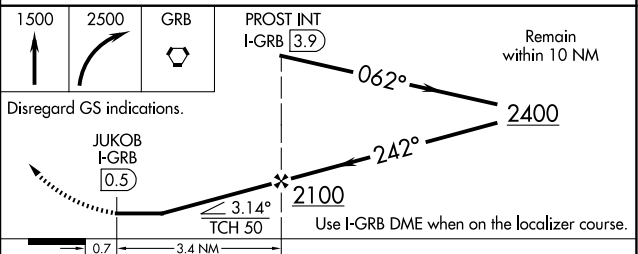
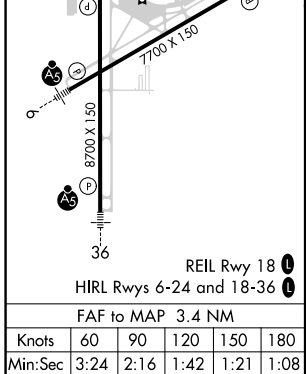
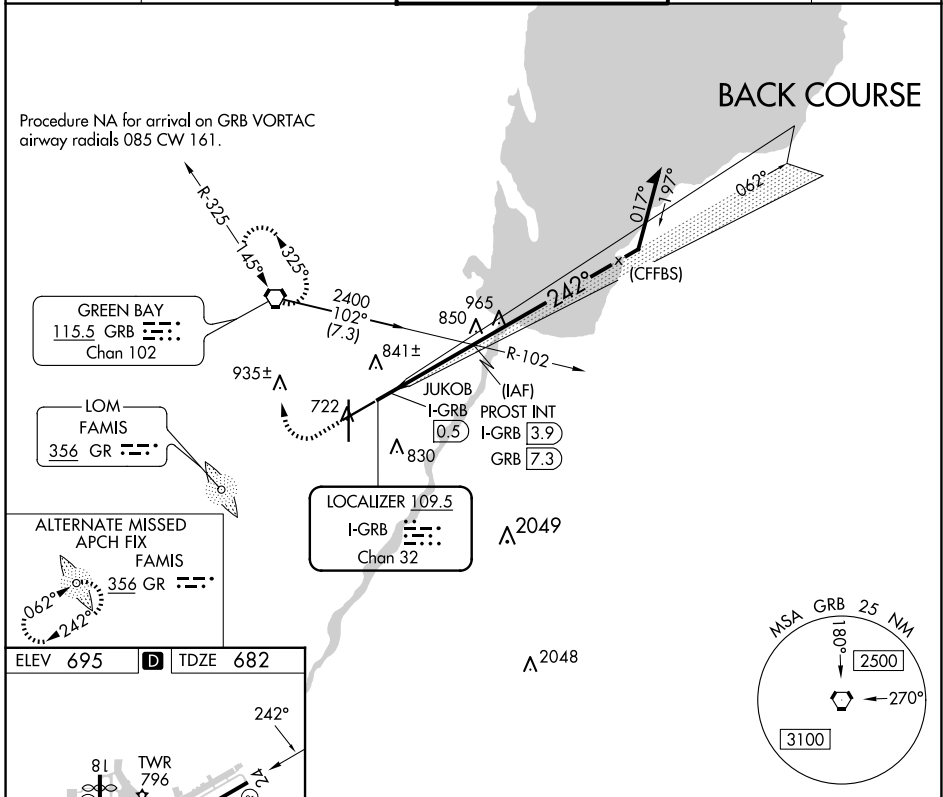
# LOC BC RWY 24

GREEN BAY/AUSTIN STRAUBEL INTL (GRB)

**⚠**  
**ASR**

MISSED APPROACH: Climb to 1500 then climbing right turn to 2500 direct GRB VORTAC and hold.

ATIS <b>124.1</b>	GREEN BAY APP CON* <b>119.4 338.2</b>	GREEN BAY TOWER* <b>118.7 (CTAF) 257.8</b>	GND CON <b>121.9</b>	CLNC DEL <b>121.75</b>
----------------------	--	---	-------------------------	---------------------------



CATEGORY	A	B	C	D
S-24	1100-1 418 (500-1)		1100-1½ 418 (500-1½)	
<b>C</b> CIRCLING	1200-1 505 (600-1)		1300-1¾ 605 (700-1¾)	1300-2 605 (700-2)

EC-3, 20 MAR 2025 to 17 APR 2025

EC-3, 20 MAR 2025 to 17 APR 2025