

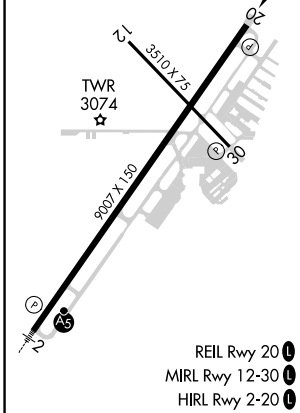
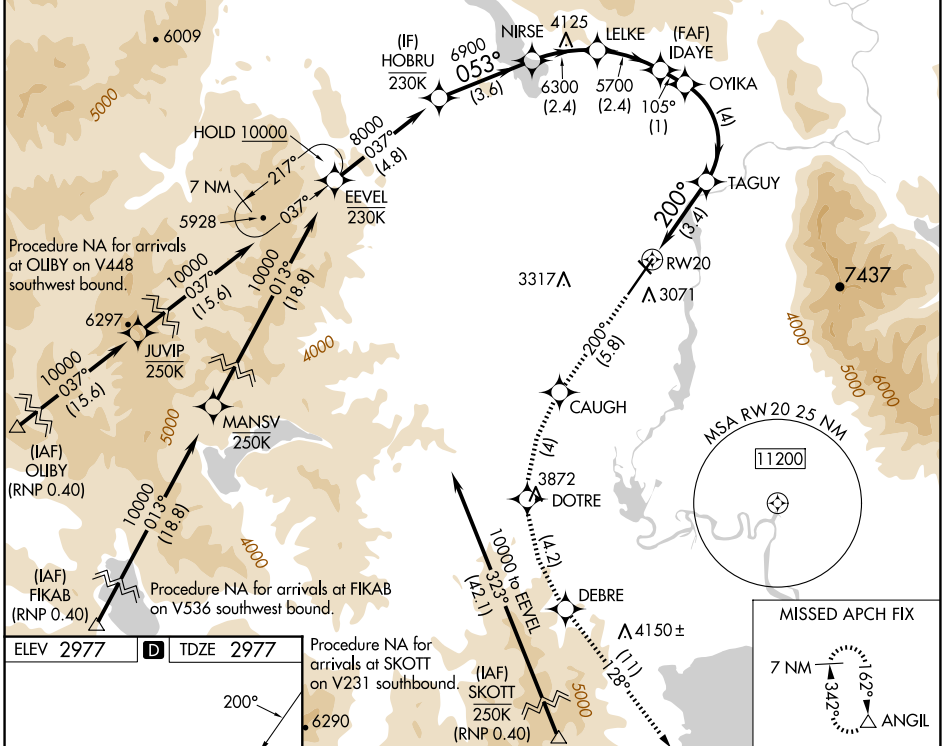
APP CRS	Rwy Idg	<b>9007</b>
<b>200°</b>	TDZE	<b>2977</b>
	Apt Elev	<b>2977</b>

# RNAV (RNP) RWY 20

GLACIER PARK INTL (GPI)

RNP AR APCH - GPS.	MISSED APPROACH: Climb to 10000 on track 200° to CAUGH, left turn to DOTRE, left turn to DEBRE, and on track 128° to ANGL and hold, continue climb-in-hold to 10000. *Missed approach requires minimum climb of 230 feet per NM to 6800.
-15°C For uncompensated Baro-VNAV systems, procedure NA below -25°C or above 54°C.	

ATIS <b>132.625</b>	SALT LAKE CENTER <b>127.075 244.875</b>	GLACIER TOWER* <b>124.55 (CTAF) 0</b>	GND CON <b>121.6</b>	UNICOM <b>122.95</b>
------------------------	--	--	-------------------------	-------------------------



ELEV 2977	TDZE 2977	Procedure NA for arrivals at SKOTT on V231 southbound.		(IAF) SKOTT 250K (RNP 0.40)	MISSED APCH FIX	
10000	CAUGH	DOTRE	DEBRE	tr 128°	ANGIL	HOBRU
tr 200°						
	TAGUY	OYIKA	IDAYE	LELKE	NIRSE	8000
	4100	5377	5700	6300	6900	
	200°	105°	5700			GP 3.00°
	3.4 NM	4 NM	1 NM	2.4 NM	2.4 NM	TCH 45
CATEGORY	A	B	C	D		
RNP 0.10 DA*	3346-1		369 (400-1)			
RNP 0.30 DA*	3418-1 3/8		441 (500-1 3/8)			
RNP 0.30 DA	3637-1 7/8		660 (700-1 7/8)			

## AUTHORIZATION REQUIRED

NW-1, 20 MAR 2025 to 17 APR 2025

NW-1, 20 MAR 2025 to 17 APR 2025