

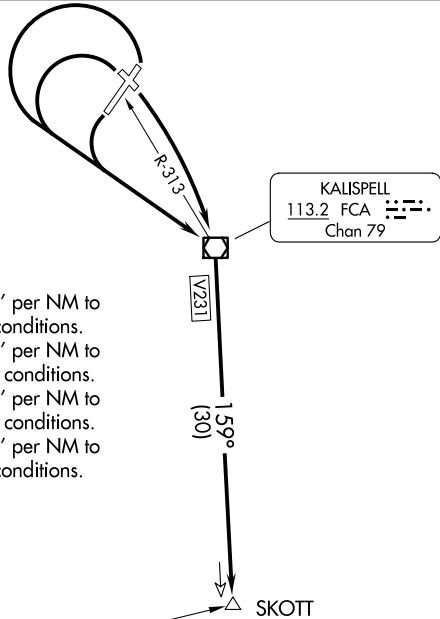
(SKOTT2.SKOTT) 23334

# SKOTT TWO DEPARTURE (OBSTACLE)

AL-887 (FAA)

GLACIER PARK INTL (GPI)  
KALISPELL, MONTANA

SALT LAKE CENTER  
127.075 244.875  
GLACIER TOWER ★  
124.55



### TAKEOFF MINIMUMS

- Rwy 2: Standard with minimum climb of 290' per NM to 7800, or 2700-3 for climb in visual conditions.
- Rwy 12: Standard with minimum climb of 250' per NM to 12000, or 2700-3 for climb in visual conditions.
- Rwy 20: Standard with minimum climb of 250' per NM to 12000, or 2700-3 for climb in visual conditions.
- Rwy 30: Standard with minimum climb of 260' per NM to 8900, or 2700-3 for climb in visual conditions.

MULLAN PASS  
117.8 MLP  
Chan 125

### TAKEOFF OBSTACLE NOTES

- Rwy 2: Trees 1469' from DER, 675' right of centerline, 100' AGL/3065' MSL.
- Rwy 12: Multiple vehicles on roadway, train on track, and a pole beginning 542' from DER, on centerline extending left and right of centerline, up to 129' AGL/3087' MSL.  
Trees 2325' from DER, 226' left of centerline, 94' AGL/3063' MSL.  
Trees 3114' from DER, 420' right of centerline, 117' AGL/3082' MSL.
- Rwy 20: Trees 2320' from DER, 1055' left of centerline, 107' AGL/3057' MSL.  
Trees 1.1 NM from DER, 1679' right of centerline, 107' AGL/3154' MSL.
- Rwy 30: Trees 721' from DER, 60' right of centerline, 104' AGL/3136' MSL.  
Trees 873' from DER, 86' left of centerline, 104' AGL/3149' MSL.

NOTE: Chart not to scale.

### DEPARTURE ROUTE DESCRIPTION

- TAKEOFF RUNWAY 2:** Climbing left turn direct FCA VOR/DME, thence.... or, climb in visual conditions to cross Glacier Park Intl Airport southeast bound at or above 5600, then on FCA R-313 to FCA VOR/DME, thence. . . .
  - TAKEOFF RUNWAY 12:** Climbing right turn direct FCA VOR/DME, thence.... or, climb in visual conditions to cross Glacier Park Intl Airport southeast bound at or above 5600, then on FCA R-313 to FCA VOR/DME, thence. . . .
  - TAKEOFF RUNWAY 20:** Climbing left turn direct FCA VOR/DME, thence.... or, climb in visual conditions to cross Glacier Park Intl Airport southeast bound at or above 5600, then on FCA R-313 to FCA VOR/DME, thence. . . .
  - TAKEOFF RUNWAY 30:** Climbing left turn direct FCA VOR/DME, thence.... or, climb in visual conditions to cross Glacier Park Intl Airport southeast bound at or above 5600, then on FCA R-313 to FCA VOR/DME, thence. . . .
- . . . .continue climb to 12000 via FCA R-159 to SKOTT INT.

# SKOTT TWO DEPARTURE (OBSTACLE)

(SKOTT2.SKOTT) 13JAN11

KALISPELL, MONTANA  
GLACIER PARK INTL (GPI)

NW-1, 20 MAR 2025 to 17 APR 2025

NW-1, 20 MAR 2025 to 17 APR 2025