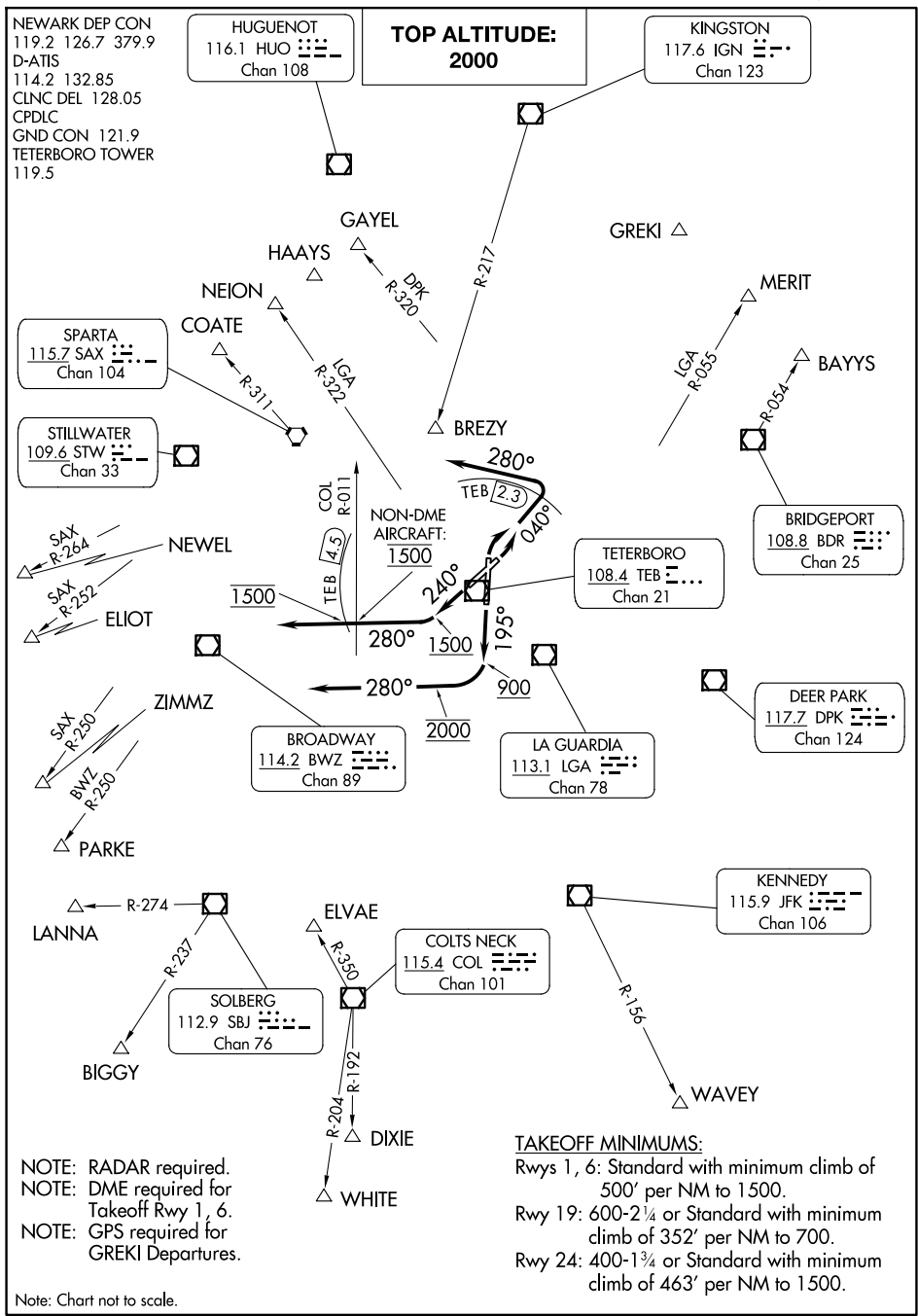


# TETERBORO FOUR DEPARTURE



NOTE: RADAR required.  
 NOTE: DME required for  
 Takeoff Rwy 1, 6.  
 NOTE: GPS required for  
 GREKI Departures.

Note: Chart not to scale.

**TAKEOFF MINIMUMS:**  
 Rws 1, 6: Standard with minimum climb of  
 500' per NM to 1500.  
 Rwy 19: 600-2¼ or Standard with minimum  
 climb of 352' per NM to 700.  
 Rwy 24: 400-1¾ or Standard with minimum  
 climb of 463' per NM to 1500.

# TETERBORO FOUR DEPARTURE

NE-2, 20 MAR 2025 to 17 APR 2025

NE-2, 20 MAR 2025 to 17 APR 2025

# TETERBORO FOUR DEPARTURE



## DEPARTURE ROUTE DESCRIPTION

TAKEOFF RUNWAY 1: Climbing right turn heading 040° to TEB 2.3 DME, then turn left heading 280°, maintain 2000, thence . . . .

TAKEOFF RUNWAY 6: Climbing left turn heading 040° to TEB 2.3 DME, then turn left heading 280°, maintain 2000, thence . . . .

TAKEOFF RUNWAY 19: Climb on heading 195° to 900, then climbing right turn to 2000 heading 280°, maintain 2000 (do not climb above 2000), thence . . . .

TAKEOFF RUNWAY 24: Climb on heading 240° to 1500 (do not climb above 1500), then turn right heading 280°, cross TEB 4.5 DME at 1500 (non-DME aircraft cross COL R-011 at 1500), then climb and maintain 2000, thence . . . .

. . . . as per notes or via vector to assigned route/fix. Expect clearance to filed altitude/flight level ten minutes after departure.

### PROCEDURAL NOTES:

BAYYS Departures expect vectors to BDR/BDR R-054.

BIGGY Departures expect vectors to SBJ/SBJ R-237.

BREZY Departures expect vectors to IGN R-217 to BREZY.

COATE Departures expect vectors to SAX/SAX R-311.

ELIOT Departures expect vectors to SAX R-252. ELIOT authorized for all aircraft types but restricted to a final altitude of 14000 to 16000.

GAYEL Departures expect vectors to DPK R-320.

HAAYS Departures expect vectors to HUO.

LANNA Departures expect vectors to SBJ/SBJ R-274.

MERIT Departures expect vectors to LGA R-055.

NEION Departures expect vectors to LGA R-322.

NEWEL Departures expect vectors to SAX R-264. NEWEL authorized only for jet aircraft requesting a final altitude of FL180 and above.

PARKE Departures expect vectors to BWZ R-250.

WAVEY Departures expect vectors to JFK/JFK R-156.

WHITE/DIXIE Departures expect vectors to COL R-350 or ELVAE/COL. Thence WHITE on COL R-204 or DIXIE on COL R-192.

ZIMMZ Departures expect vectors to SAX R-250. ZIMMZ authorized for all aircraft types but restricted to final altitude of FL180 and above.

NE-2, 20 MAR 2025 to 17 APR 2025

NE-2, 20 MAR 2025 to 17 APR 2025

# TETERBORO FOUR DEPARTURE