

LOC/DME I-SND <b>108.9</b> Chan 26	APP CRS <b>095°</b>	Rwy ldg <b>10002</b> TDZE <b>55</b> Apt Elev <b>55</b>
--	------------------------	--

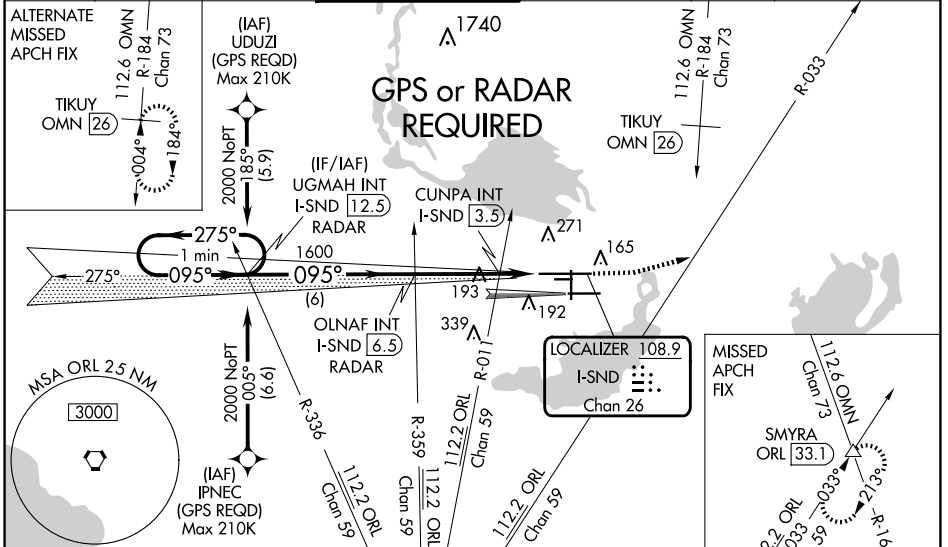
# ILS or LOC RWY 9L

ORLANDO SANFORD INTL (SF'B)

**⚠** VDP NA with Exec altimeter setting. When local altimeter setting not received, use Exec altimeter setting: increase DA to 298 feet; increase all MDAs 60 feet and visibility Cats C and D ½ SM. Simultaneous approach authorized with Rwy 9R. Circling to Rwy 27C NA at night.

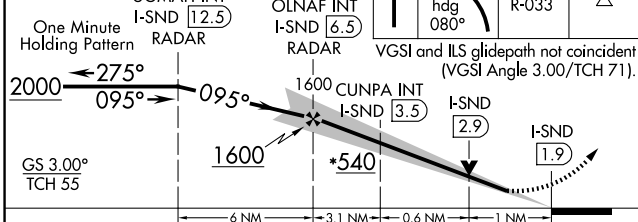
**MALS**  
MISSED APPROACH: Climb to 500 then climbing left turn to 2000 on heading 080° and ORL VORTAC R-033 to SMYRA INT/ORL 33.1 DME and hold.

ATIS <b>125.975</b>	ORLANDO APP CON <b>135.3 351.9</b> (NORTH) <b>119.775 351.9</b> (SOUTH)	SANFORD TOWER* <b>120.3</b> (CTAF) <b>0 254.35</b>	GND CON <b>121.35 254.35</b>	CLNC DEL <b>123.975</b>	CLNC DEL <b>121.35</b> (when twr closed)
------------------------	---	---	---------------------------------	----------------------------	--



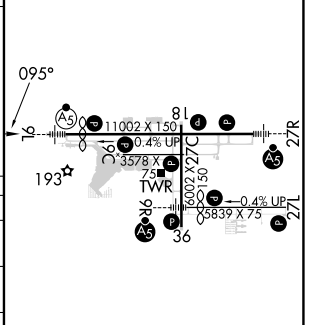
\*600 when using Exec altimeter setting.

500	2000	SMYRA
↑	hdg 080°	ORL R-033



ELEV 55	TDZE 55
---------	---------

CATEGORY	A	B	C	D
S-ILS 9L	255-½ 200 (200-½)			
S-LOC 9L	540-½	485 (500-½)	540-1	485 (500-1)
<b>C</b> CIRCLING	580-1	525 (600-1)	600-1½ 545 (600-1½)	640-2 585 (600-2)
CUNPA FIX MINIMUMS (DUAL VOR RECEIVER OR DME REQUIRED)				
S-LOC 9L	460-½	405 (500-½)	460-¾	405 (500-¾)
<b>C</b> CIRCLING	580-1	525 (600-1)	600-1½ 545 (600-1½)	640-2 585 (600-2)



MIRL Rwy 9C-27C and 18-36  
HIRL Rwy 9L-27R and 9R-27L  
REIL Rwys 9C, 18, 27L and 36

FAF to MAP 4.7 NM

Knots	60	90	120	150	180
Min:Sec	4:42	3:08	2:21	1:53	1:34

SE-3, 20 MAR 2025 to 17 APR 2025

SE-3, 20 MAR 2025 to 17 APR 2025