

VOR/DME LRP <b>117.3</b> Chan <b>120</b>	APP CRS <b>247°</b>	Rwy Idg <b>6118</b> TDZE <b>384</b> Apt Elev <b>403</b>
--	------------------------	---

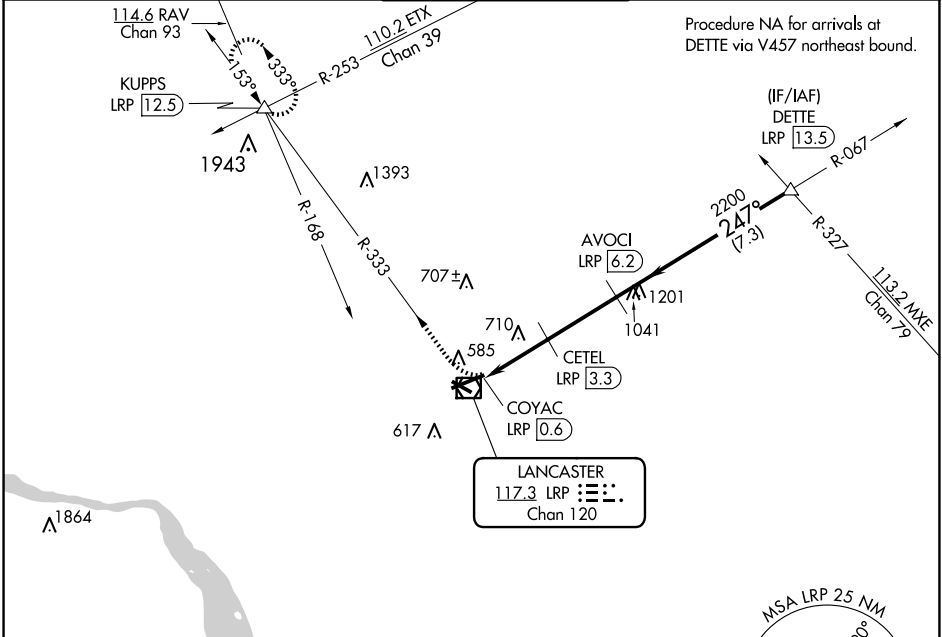
# VOR/DME RWY 26

LANCASTER (LNS)

**▼** Night landing: Rwy 13, 31 NA. Helicopter visibility reduction below 3/4 SM NA.  
**▲** When local altimeter setting not received, use Harrisburg Intl altimeter setting and increase all MDA 80 feet and S-26 and Circling Cats C and D visibility 1/4 mile.

**MISSED APPROACH:** Climbing right turn to 3000 via LRP VOR/DME R-333 to KUPPS INT/LRP 12.5 DME and hold.

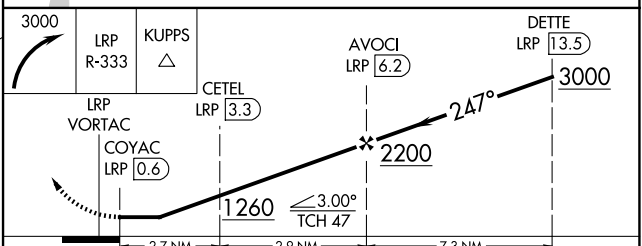
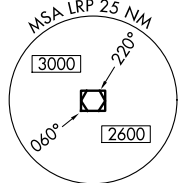
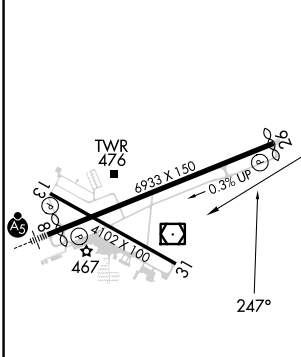
ATIS <b>125.675</b>	HARRISBURG APP CON <b>126.45 281.525</b>	LANCASTER TOWER★ <b>120.9 (CTAF) 251.1</b>	GND CON <b>121.8</b>	UNICOM <b>122.95</b>
------------------------	---	---	-------------------------	-------------------------



NE-4, 20 MAR 2025 to 17 APR 2025

NE-4, 20 MAR 2025 to 17 APR 2025

ELEV <b>403</b>	<b>D</b>	TDZE <b>384</b>
-----------------	----------	-----------------



- REIL Rwy 31 **1**
- HIRL Rwy 8-26 **1**
- MIRL Rwy 13-31 **1**

CATEGORY	A	B	C	D
S-26	1020-1 636 (700-1)		1020-1 3/4 636 (700-1 3/4)	1020-2 636 (700-2)
CIRCLING	1020-1 617 (700-1)		1020-1 3/4 617 (700-1 3/4)	1080-2 1/4 677 (700-2 1/4)