

VOR/DME LRP 117.3 Chan 120	APP CRS 090°	Rwy Idg 6118 TDZE 399 Apt Elev 403
--	------------------------	---

VOR/DME RWY 8

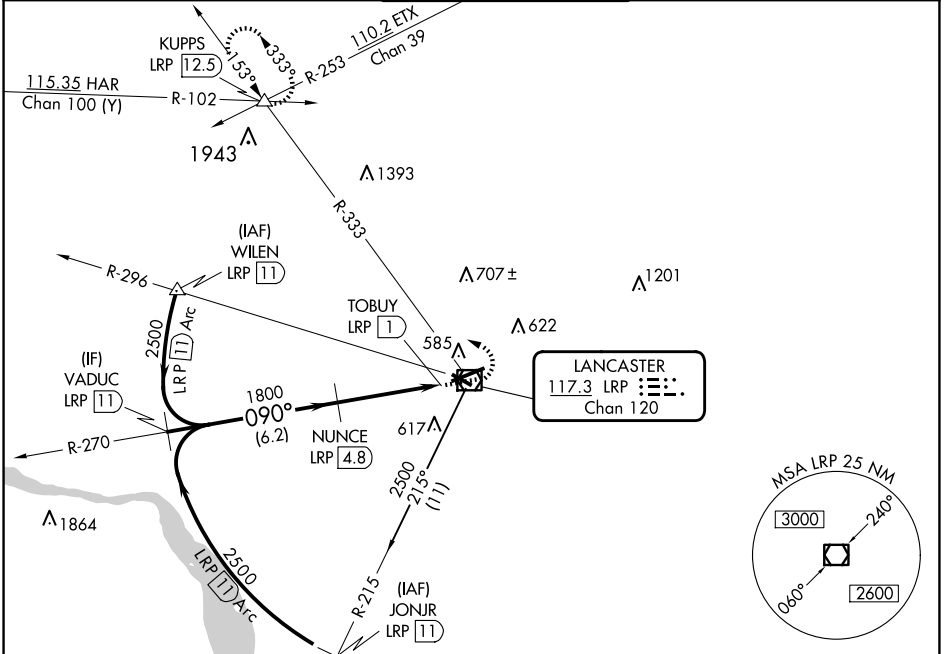
LANCASTER (LNS)

⚠ Circling Rwy 13, 31 NA at night. Inop table does not apply.
⚠ When local altimeter setting not received, use Harrisburg Intl altimeter setting and increase all MDA 80 feet, and S-8 and Circling Cats C and D visibility ¼ mile.

MALSR

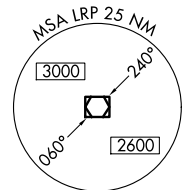
MISSED APPROACH: Climb to 1200 then climbing left turn to 3000 via LRP VOR/DME R-333 to KUPPS INT/LRP 12.5 DME and hold.

ATIS 125.675	HARRISBURG APP CON 126.45 281.525	LANCASTER TOWER★ 120.9 (CTAF) 251.1	GND CON 121.8	UNICOM 122.95
------------------------	---	---	-------------------------	-------------------------

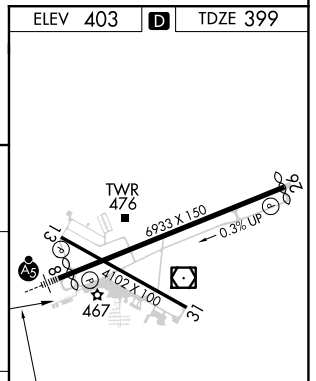
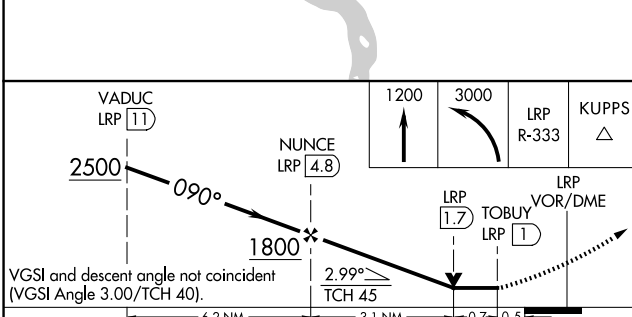


NE-4, 20 MAR 2025 to 17 APR 2025

NE-4, 20 MAR 2025 to 17 APR 2025



ELEV 403	D	TDZE 399
----------	----------	----------



CATEGORY	A	B	C	D
S-8	820-1	421 (500-1)	820-1¼	421 (500-1¼)
CIRCLING	940-1	537 (600-1)	960-1½	1060-2 557 (600-1½) 657 (700-2)

REIL Rwy 31 **Ⓛ**
 HIRL Rwy 8-26 **Ⓛ**
 MRL Rwy 13-31 **Ⓛ**