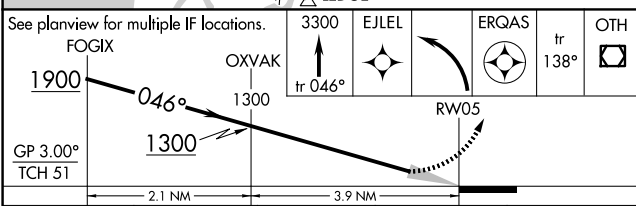
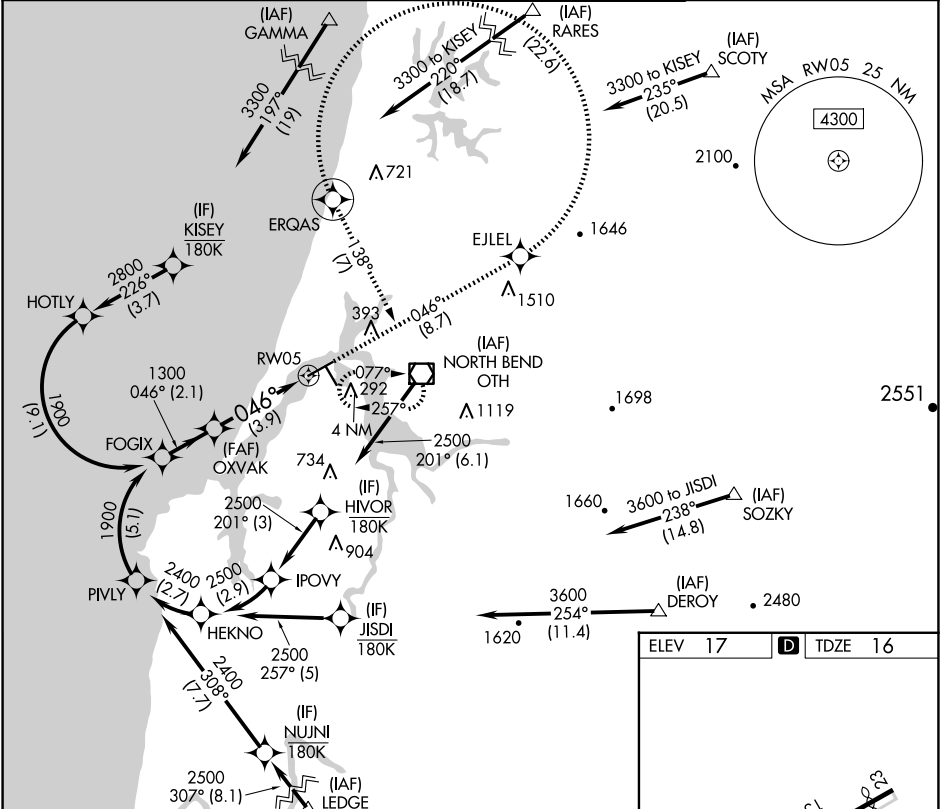


APP CRS	Rwy Idg	5320
046°	TDZE	16
	Apt Elev	17

RNAV (RNP) Z RWY 5

SOUTHWEST OREGON RGNL (OTH)

RNP AR APCH. RF required. For inop ALS, increase *RNP 0.11 all Cats visibility to 1 SM, #RNP 0.30 all Cats visibility to 1 1/8 SM, and RNP 0.30 all Cats visibility to 1 1/8 SM. For uncompensated Baro-VNAV systems, procedure NA below -2°C or above 54°C.		MALS R 	MISSED APPROACH: Climb to 3300 on track 046° to EJLEL, left turn to ERQAS, and on track 138° to OTH VOR/DME and hold. *Missed approach requires minimum climb of 400 feet per NM to 1200. #Missed approach requires minimum climb of 255 feet per NM to 2400.
AWOS-3PT	SEATTLE CENTER	NORTH BEND TOWER*	GND CON
135.075	127.55 254.35	118.45 (CTAF)	127.1



CATEGORY	A	B	C	D
RNP 0.11 DA*		394-5/8	378 (400-5/8)	
RNP 0.30 DA#		477-1 1/8	461 (500-1 1/8)	
RNP 0.30 DA		569-1 3/8	553 (600-1 3/8)	

AUTHORIZATION REQUIRED

ELEV 17	D TDZE 16
---------	------------------

HIRL Rwy 5-23 **1**
 MIRL Rwy 13-31 **2**
 REIL Rwys 13, 23 and 31 **3**

NW-1, 20 MAR 2025 to 17 APR 2025

NW-1, 20 MAR 2025 to 17 APR 2025