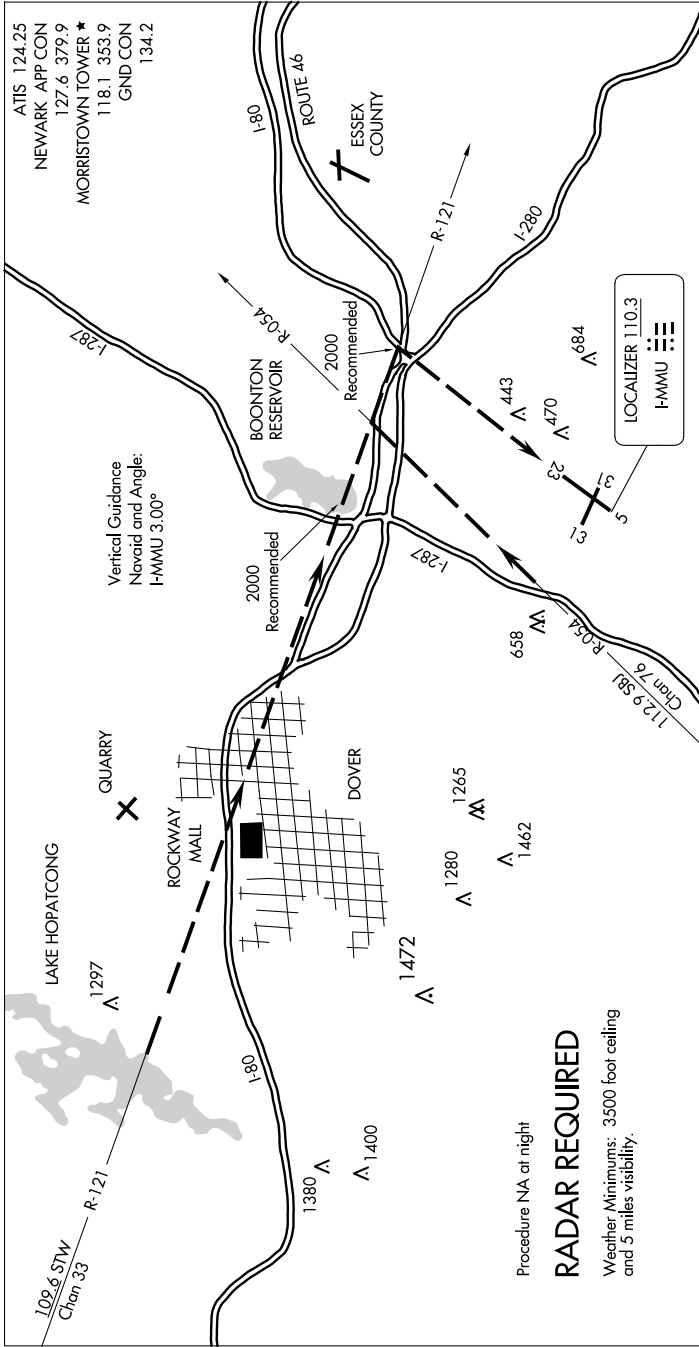


# ROUTE 80 VISUAL RWY 23

AL-931 (FAA)

MORRISTOWN MUNI (MMU)  
MORRISTOWN, NEW JERSEY

NE-2, 20 MAR 2025 to 17 APR 2025



1	2	3	4	5	6	7	8	9	10	11	12	13	14	15	16	17	18	19	20	21	22	23
---	---	---	---	---	---	---	---	---	----	----	----	----	----	----	----	----	----	----	----	----	----	----

When approaching the airport from the northwest, expect vectors to intercept the STW R-121.  
When you see the highway junction of Rts. 46, 80, and 280, proceed to that point to turn final for Rwy 23.

When approaching the airport from the southwest, expect vectors to intercept the SBJ R-054.  
When you see Rt. 287, follow it until turning base over Rt. 80. Turn final over the junction of Rts. 46, 80 and 280 for Rwy 23.

Procedure NA at night  
**RADAR REQUIRED**  
 Weather Minimums: 3500 foot ceiling  
 and 5 miles visibility.

# ROUTE 80 VISUAL RWY 23

40°48'N-74°25'W

MORRISTOWN, NEW JERSEY  
MORRISTOWN MUNI (MMU)

NE-2, 20 MAR 2025 to 17 APR 2025