

HI-TACAN Z RWY 23L/R

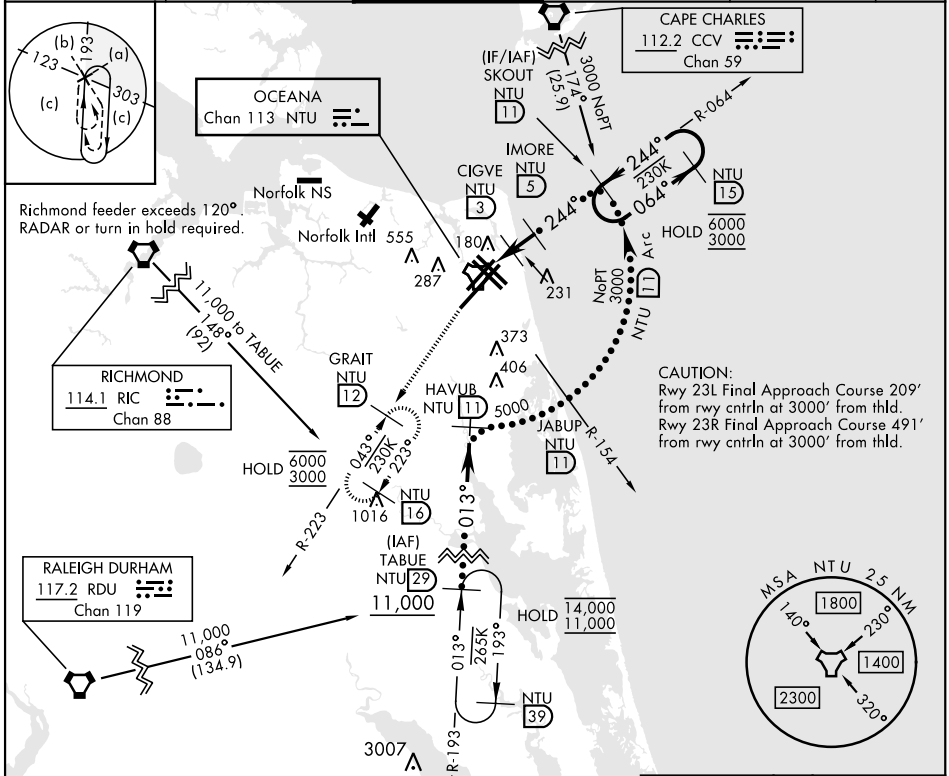
TACAN NTU Chan 113	APCH CRS 244°	Rwy Idg 23L 12,001 23R 8000
		TDZE 23L 21 23R 20
		Arpt Elev 22

[USN]
OCEANA NAS (APOLLO SOUCEK FLD) (KNTU)

ALSF-1

 MISSED APPROACH: Climb to 3000 via R-064 to NTU TACAN, and via R-223 to GRAIT and hold.

ATIS 317.6	APP/DEP CON 123.9 266.8	TOWER 127.075 360.2	GND CON 119.6 336.4	CLNC DEL 254.4	ASR/ PAR
----------------------	-----------------------------------	-------------------------------	-------------------------------	--------------------------	-------------



CAUTION:
 Rwy 23L Final Approach Course 209° from rwy cntrln at 3000' from thld.
 Rwy 23R Final Approach Course 491° from rwy cntrln at 3000' from thld.

NE-3, 20 MAR 2025 to 17 APR 2025

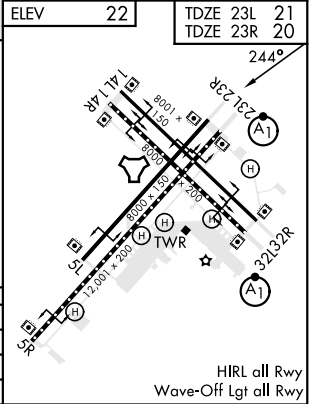
NE-3, 20 MAR 2025 to 17 APR 2025

EMERG SAFE ALT 100 NM 4100

3000	NTU	NTU	NTU
↑	R-064		R-223

WENID 1.3	CIGVE 1.8	IMORE 5	SKOUT 11	NTU 15
840	1600	6000	3000	
1.7 NM	2 NM			

CATEGORY	C	D	E
S-23L*	440-¾	419 (500-¾)	
S-23R	440-1½	420 (500-1½)	
CIRCLING	600-1½ 578 (600-1½)	600-2 578 (600-2)	900-3 878 (900-3)



HI-TACAN Z RWY 23L/R