

VIRGINIA BEACH, VIRGINIA

HI-TACAN Z RWY 5L

TACAN NTU
Chan 113

APCH CRS
043°

Rwy Idg 8000
TDZE 20
Arprt Elev 22

AL-934 [USN]

OCEANA NAS (APOLLO SOUCEK FLD) (KNTU)

MISSED APPROACH: Climb to 3000 via R-223 to NTU TACAN and via R-064 to SKOUT and hold.

ATIS
317.6

APP/DEP CON
123.9 266.8

TOWER
127.075 360.2

GND CON
119.6 336.4

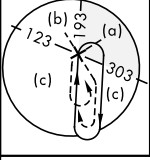
CLNC DEL
254.4

ASR/
PAR

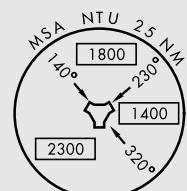
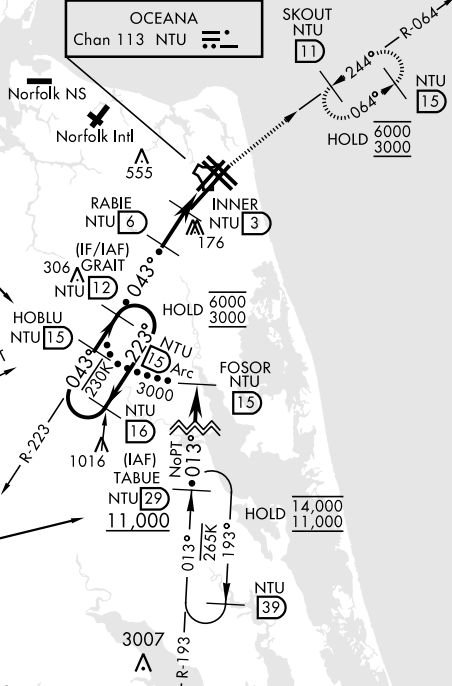
CAUTION: Final approach crs 17° from rwy
cntrl at 3000' from thld.

Knots	60	120	180	240	300	360
V/V(fpm)	210	420	630	840	1050	1260

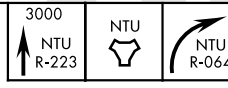
Min climb of 210 ft/NM to 3000 - Controlling Obstacle Unk



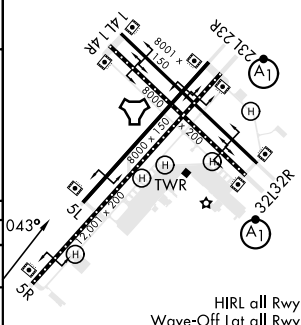
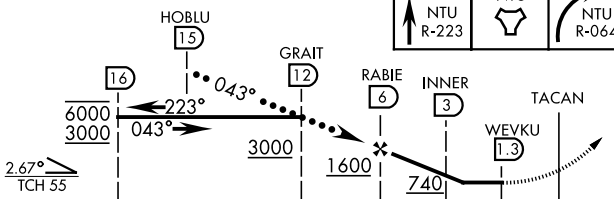
Richmond feeder exceeds 120°
RADAR or turn in hold required.



EMERG SAFE ALT 100 NM 4100



ELEV 22 TDZE 20



CATEGORY	C	D	E
S-5L	420-1½	400 (400-1½)	
CIRCLING	600-1½ 578 (600-1½)	600-2 578 (600-2)	900-3 878 (900-3)

VIRGINIA BEACH, VIRGINIA

36°49'N-76°02'W

OCEANA NAS (APOLLO SOUCEK FLD) (KNTU)

Orig 27JAN22

HI-TACAN Z RWY 5L

NE-3, 20 MAR 2025 to 17 APR 2025

NE-3, 20 MAR 2025 to 17 APR 2025

HIRL all Rwy
Wave-Off Lgt all Rwy