

VIRGINIA BEACH, VIRGINIA

# RNAV (GPS) RWY 23L

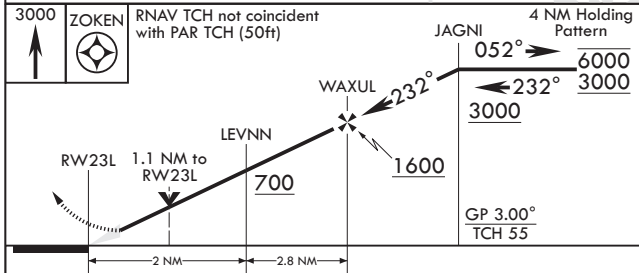
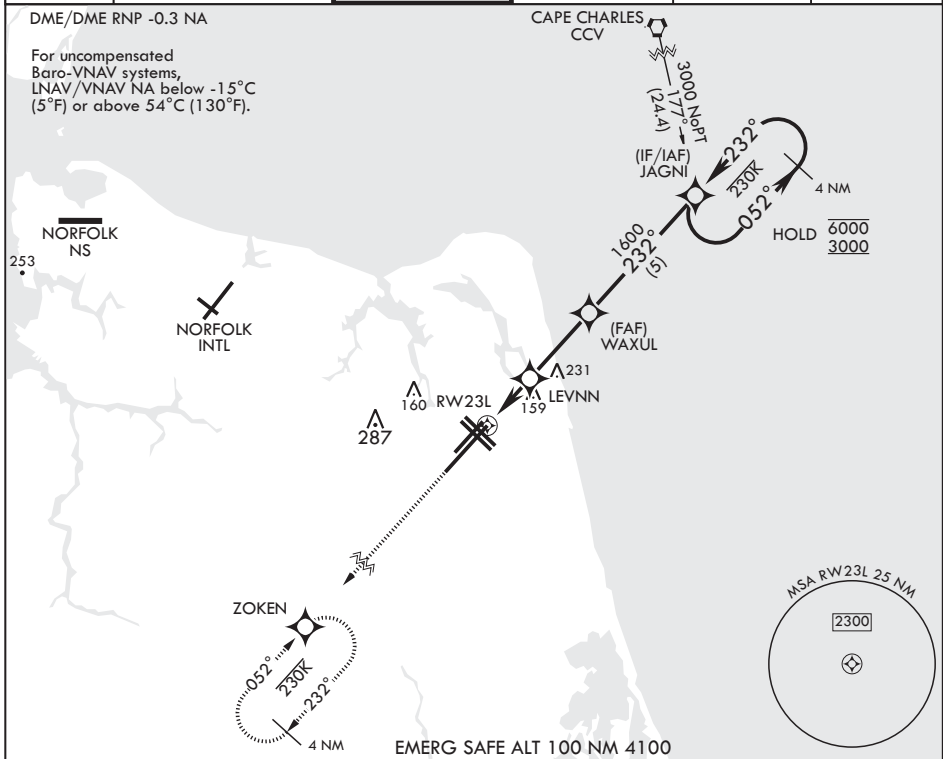
WAAS CH 67300 W23A	APCH CRS 232°	Rwy ldg TDZE 12,001 21 22
--------------------------	------------------	------------------------------------

AL-934 (USN) OCEANA NAS (APOLLO SOUCEK FLD) (KNTU)

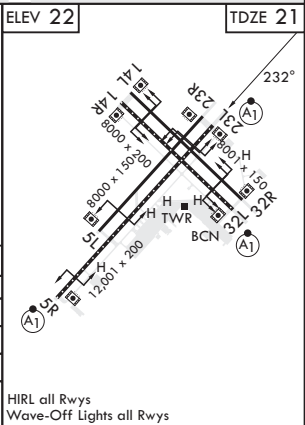
\* When ALS inop, increase vis to 3/4 mile.  
 \*\* When ALS inop, increase vis to 7/8 mile.  
 \*\*\* When ALS inop, increase CAT AB vis to 1 mile; CAT CD vis to 1 1/8 miles.

ALSF-1 MISSED APPROACH: Climb to 3000 direct ZOKEN and hold.

ATIS 317.6	APP CON/DEP CON 123.9 266.8	TOWER 127.075 360.2	GND CON 119.6 336.4	CLNC DEL 254.4	ASR/PAR
---------------	--------------------------------	------------------------	------------------------	-------------------	---------



CATEGORY	A	B	C	D
LPV DA*	221-1/2	200	(200-1/2)	
LNAV/VNAV DA**	324-1/2	303	(400-1/2)	
LNAV MDA***	420-1/2 399 (400-1/2)		420-5/8 399 (400-5/8)	
CIRCLING	500-1 478 (500-1)		600-1 1/2 578 (600-1 1/2)	600-2 578 (600-2)



VIRGINIA BEACH, VIRGINIA  
Amdt 4 27JAN22

36°49'N - 76°02'W OCEANA NAS (APOLLO SOUCEK FLD) (KNTU)

# RNAV (GPS) RWY 23L

NE-3, 20 MAR 2025 to 17 APR 2025

NE-3, 20 MAR 2025 to 17 APR 2025