

VIRGINIA BEACH, VIRGINIA

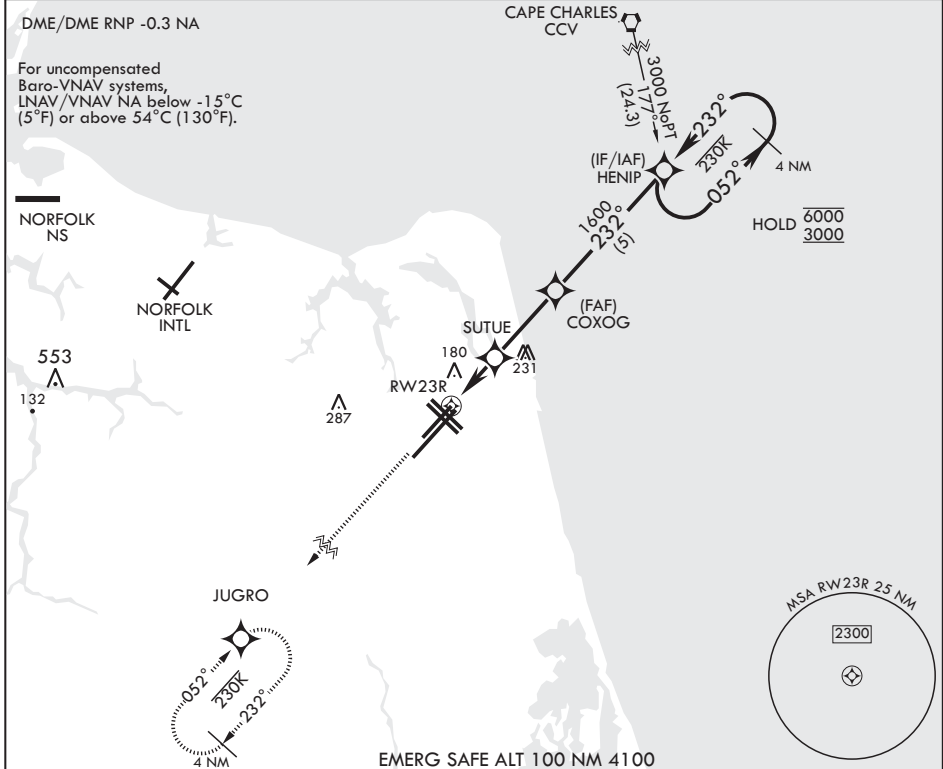
RNAV (GPS) RWY 23R

WAAS CH 71079 W23B	APCH CRS 232°	Rwy ldg TDZE Arpt Elev	8000 20 22
--------------------------	------------------	------------------------------	------------------

AL-934 (USN) OCEANA NAS (APOLLO SOUCEK FLD) (KNTU)

▽ MISSED APPROACH: Climb to 3000 direct JUGRO and hold.

ATIS 317.6	APP CON/DEP CON 123.9 266.8	TOWER 127.075 360.2	GND CON 119.6 336.4	CLNC DEL 254.4	ASR/PAR
---------------	--------------------------------	------------------------	------------------------	-------------------	---------



3000	JUGRO	RNAV TCH not coincident with PAR TCH (50ft).	4 NM Holding Pattern	ELEV 22	TDZE 20
↑			HENIP → 052°		
			← 232° 6000		
			← 232° 3000		
			← 232° 3000		
			GP 3.00°		
			TCH 55		
			COXOG → 232°		
			← 232° 1600		
			← 232° 700		
			← 232° 1.1 NM to RW23R		
			← 232° 2 NM		
			← 232° 2.8 NM		

CATEGORY	A	B	C	D
LPV DA	220-3/4	200	(200-3/4)	
LNAV/VNAV DA	440-1 1/8	420	(500-1 1/8)	
LNAV MDA	440-1	420 (500-1)	440-1 1/8	420 (500-1 1/8)
Ⓢ CIRCLING	500-1	478 (500-1)	600-1 1/2	600-2
			578 (600-1 1/2)	578 (600-2)

HIRL all Rwys
Wave-Off Lights all Rwys

VIRGINIA BEACH, VIRGINIA

36°49'N - 76°02'W OCEANA NAS (APOLLO SOUCEK FLD) (KNTU)

Amdt 4 27JAN22

RNAV (GPS) RWY 23R

NE-3, 20 MAR 2025 to 17 APR 2025

NE-3, 20 MAR 2025 to 17 APR 2025