


# RNAV (GPS) RWY 32L/R

AL-934 (USN) OCEANA NAS (APOLLO SOUCEK FLD) (KNTU)

APCH CRS 325°	Rwy Idg	32L	32R
	TDZE	8000	8001
	Arprt Elev	22	20

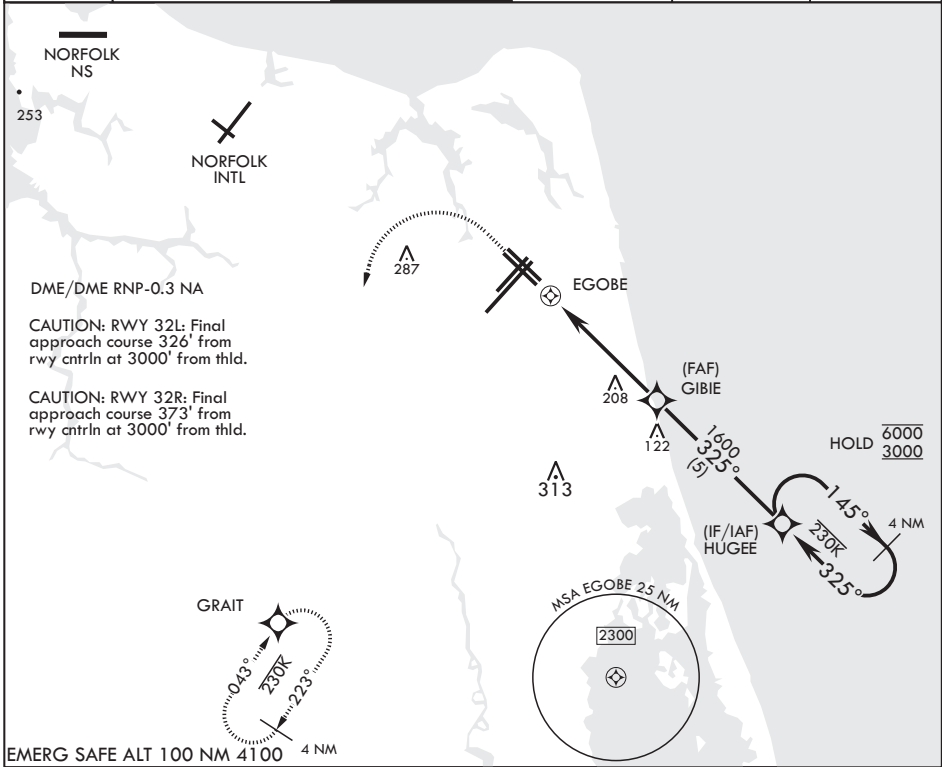
▼ \* When ALS inop increase CAT AB vis to 1 mile, CAT CD vis to 1 1/8 miles.

Rwy 32L ALSF-1

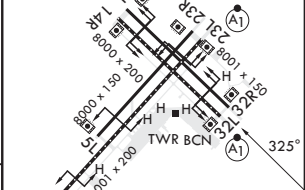
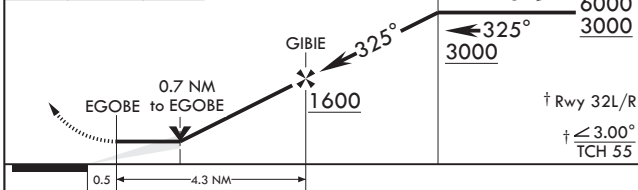


MISSED APPROACH: Climbing 1100 then climbing left turn to 3000 direct GRAIT and hold.

ATIS 317.6	APP CON/DEP CON 123.9 266.8	TOWER 127.075 360.2	GND CON 119.6 336.4	CLNC DEL 254.4	ASR/PAR
---------------	--------------------------------	------------------------	------------------------	-------------------	---------



EMERG SAFE ALT 100 NM 4100 4 NM	1100 crs 325°	3000	GRAIT	RNAV TCH not coincident with PAR TCH (50ft).	4 NM Holding Pattern	ELEV 22	TDZE 32L 22 TDZE 32R 20
---------------------------------	---------------	------	-------	--	----------------------	---------	----------------------------



CATEGORY	A	B	C	D
LNAV MDA	460-1	440 (500-1)	460-1¼	440 (500-1¼)
LNAV MDA*	460-½	438 (500-½)	460-¾	438 (500-¾)
◻ CIRCLING	500-1	478 (500-1)	600-1½ 578 (600-1½)	600-2 578 (600-2)

HIRL all Rwys  
Wave-Off Lights all Rwys

# RNAV (GPS) RWY 32L/R

NE-3, 20 MAR 2025 to 17 APR 2025

NE-3, 20 MAR 2025 to 17 APR 2025