

VIRGINIA BEACH, VIRGINIA

TACAN Y RWY 23L/R

TACAN NTU Chan 113	APCH CRS 244°	Rwy ldg 23L 12,001 23R 8000 TDZE 23L 21 23R 20 Arpt Elev 22
-----------------------	------------------	---

[USN]
OCEANA NAS (APOLLO SOUCEK FLD) (KNTU)

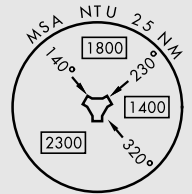
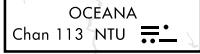
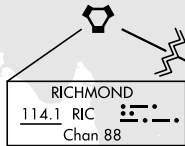
▲ * When ALS inop, increase CAT AB vis to 1 mile, CAT CD vis to 1½ miles.



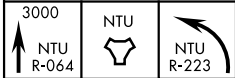
MISSED APPROACH: Climb to 3000 via R-064 to NTU TACAN and via R-223 to GRAIT and hold.

ATIS 317.6	APP/DEP CON 123.9 266.8	TOWER 127.075 360.2	GND CON 119.6 336.4	CLNC DEL 254.4	ASR/ PAR
---------------	----------------------------	------------------------	------------------------	-------------------	-------------

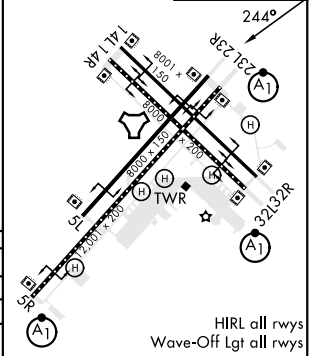
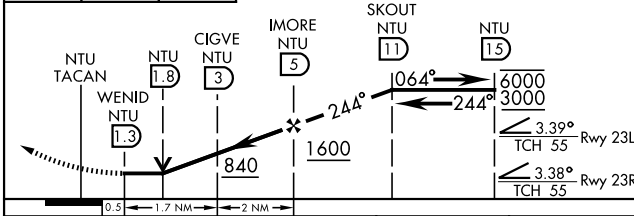
CAUTION: Rwy 23L final approach crs 209° from rwy cntrln at 3000' from thld.
Rwy 23R final approach crs 491° from rwy cntrln at 3000' from thld.



EMERG SAFE ALT 100 NM 4100



ELEV 22	TDZE 23L 21 TDZE 23R 20
---------	----------------------------



CATEGORY	A	B	C	D
S-23L *	440-½ 419 (500-½)	440-¾ 419 (500-¾)	440-1 419 (500-1)	440-1½ 419 (500-1½)
S-23R	440-1 420 (500-1)	440-1½ 420 (500-1½)	600-1½ 578 (600-1½)	600-2 578 (600-2)
CIRCLING	500-1 478 (500-1)			

HIRL all rwys
Wave-Off Lgt all rwys

VIRGINIA BEACH, VIRGINIA

36° 49' N-76° 02' W

OCEANA NAS (APOLLO SOUCEK FLD) (KNTU)

Orig 27JAN22

TACAN Y RWY 23L/R

NE-3, 20 MAR 2025 to 17 APR 2025

NE-3, 20 MAR 2025 to 17 APR 2025