

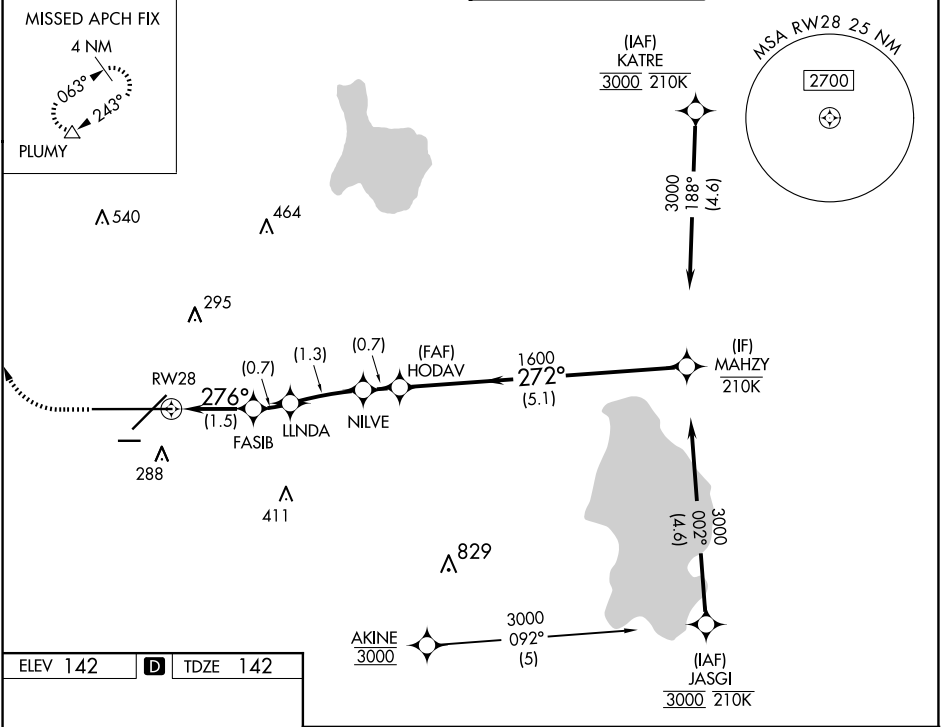
APP CRS 276°	Rwy Idg 8500
	TDZE 142
	Apt Elev 142

RNAV (RNP) Z RWY 28

LAKELAND LINDER INTL (LAL)

RNP AR APCH - GPS. For uncompensated Baro-VNAV systems, procedure NA below -15°C or above 54°C.		MISSED APPROACH: Climb to 600 then climbing right turn to 2000 direct PLUMY and hold.	
---	--	--	--

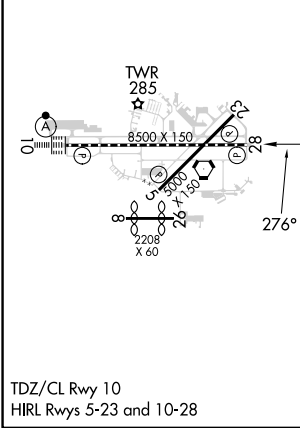
ATIS 118.025	TAMPA APP CON 120.65 290.3	LAKELAND TOWER 124.5 236.775	GND CON 121.4
-------------------------------	---	---	--------------------------------



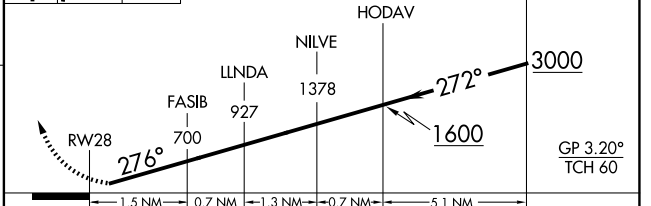
SE-3, 20 MAR 2025 to 17 APR 2025

SE-3, 20 MAR 2025 to 17 APR 2025

ELEV 142	D	TDZE 142
----------	----------	----------



600	2000	PLUMY	VGSi and RNAV glidepath not coincident (VGSi Angle 3.00/TCH 71).
-----	------	-------	---



CATEGORY	A	B	C	D
RNP 0.30 DA	507/55		365 (400-1)	

AUTHORIZATION REQUIRED