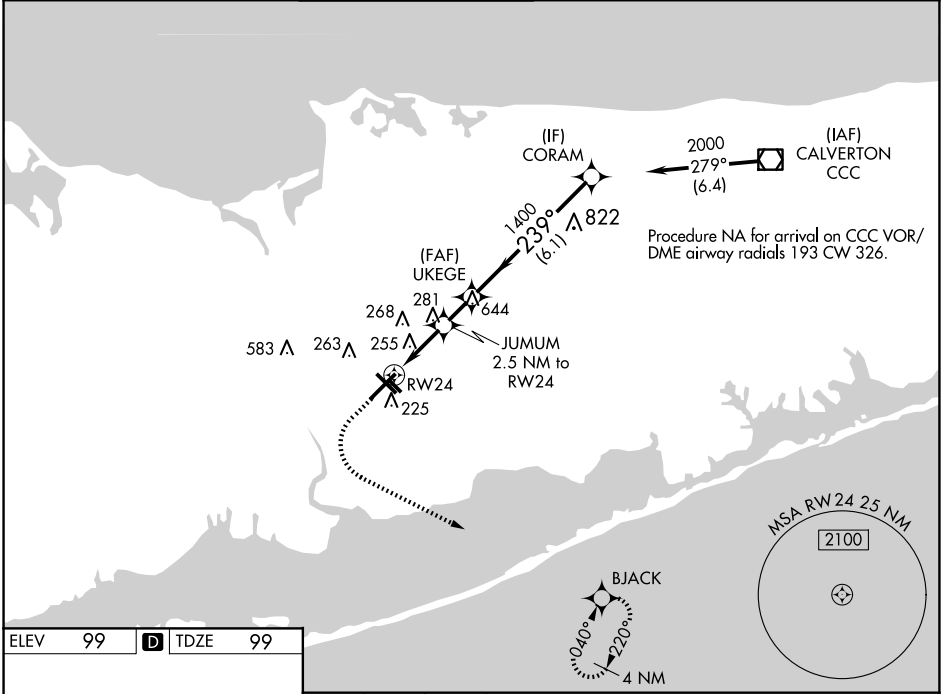


WAAS CH <b>82610</b> <b>W24A</b>	APP CRS <b>239°</b>	Rwy Idg TDZE Apt Elev	<b>7006</b> <b>99</b> <b>99</b>
--	------------------------	-----------------------------	---------------------------------------

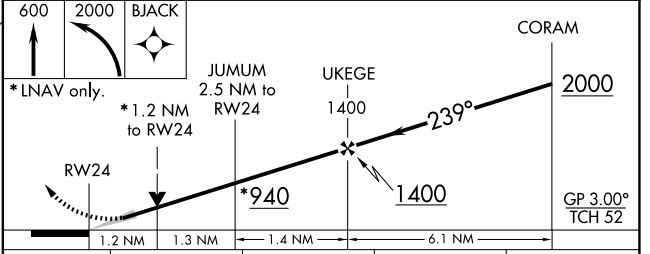
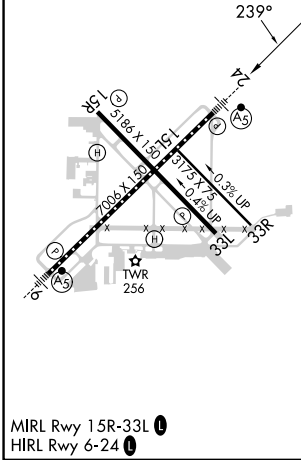
# RNAV (GPS) RWY 24

LONG ISLAND MAC ARTHUR (ISP)

For uncompensated Baro-VNAV systems, LNAV/VNAV NA below -15°C (5°F) or above 54°C (130°F). DME/DME RNP-0.3 NA.	MALSR 		MISSED APPROACH: Climb to 600 then climbing left turn to 2000 direct BJack and hold.	
	ATIS <b>120.725</b>	NEW YORK APP CON <b>120.05 343.75</b>	LONG ISLAND TOWER* <b>119.3 (CTAF) 0335.5</b>	GND CON <b>135.3</b>
				UNICOM <b>122.95</b>



ELEV 99	<b>D</b>	TDZE 99
---------	----------	---------



CATEGORY	A	B	C	D
LPV DA		299/18	200 (200-½)	
LNAV/VNAV DA		541/50	442 (500-1)	
LNAV MDA	520/24	421 (500-½)	520/40	421 (500-¾)
<b>C</b> CIRCLING	600-1 501 (600-1)	660-1 561 (600-1)	660-1½ 561 (600-1½)	960-2¾ 861 (900-2¾)

NE-2, 20 MAR 2025 to 17 APR 2025

NE-2, 20 MAR 2025 to 17 APR 2025