

LOC/DME I-ONT 109.7 Chan 34	APP CRS 258°	Rwy Idg TDZE Apt Elev	12197 932 944
---	------------------------	-----------------------------	--

ILS RWY 26R (CAT II & III)

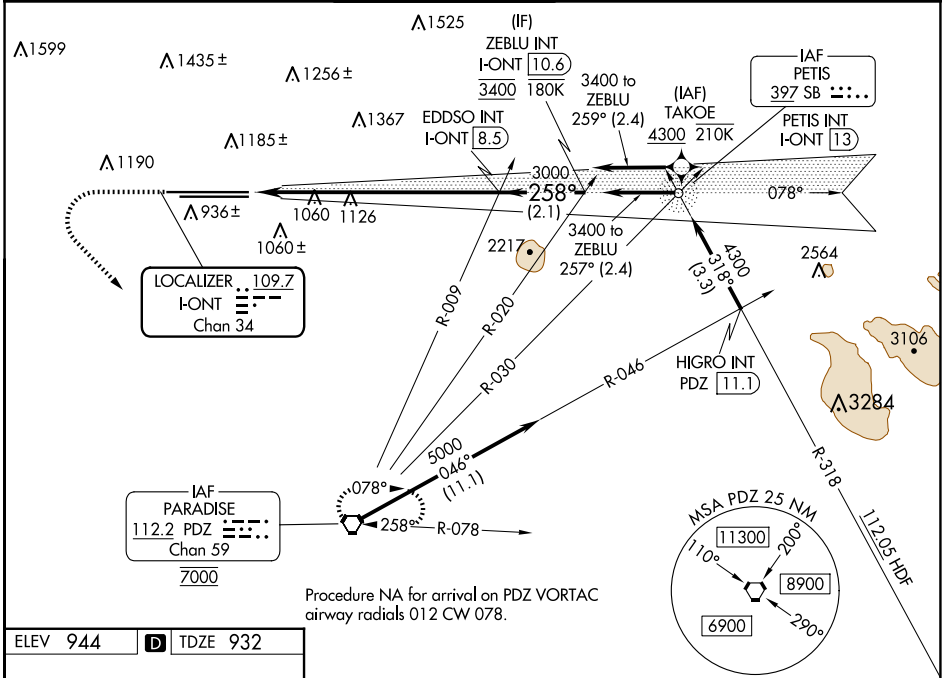
ONTARIO INTL (ONT)

RNP APCH - GPS. From TAKOE.

ALSF-2

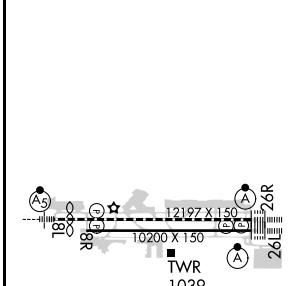
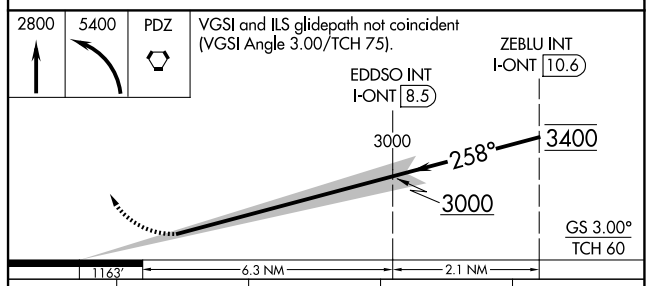
MISSED APPROACH: Climb to 2800 then climbing left turn to 5400 direct PDZ VORTAC and hold, continue climb-in-hold to 5400.

D-ATIS 124.25	SOCAL APP CON 127.0 318.2	ONTARIO TOWER 120.6 360.775	GND CON 121.9 257.8	CLNC DEL 132.9	CPDLC
-------------------------	-------------------------------------	---------------------------------------	-------------------------------	--------------------------	-------



Procedure NA for arrival on PDZ VORTAC
airway radials 012 CW 078.

ELEV 944	D	TDZE 932
-----------------	----------	-----------------



CATEGORY	A	B	C	D
S-ILS 26R	CAT II RA 100/12 100 DA 1032			
S-ILS 26R	CAT III RVR 03			

CATEGORY II & III ILS - SPECIAL AIRCREW & AIRCRAFT CERTIFICATION REQUIRED

TDZ/CL Rwy's 8L, 26L and 26R
HIRL Rwy's 8L-26R and 8R-26L

SW-3, 20 MAR 2025 to 17 APR 2025

SW-3, 20 MAR 2025 to 17 APR 2025