

SOCAL APP CON
 127.0 318.2
 CNO ATIS
 125.85
 EMT ATIS
 118.75
 ONT D-ATIS
 124.25
 POC ATIS
 124.4
 RAL ATIS
 128.8
 SBD ATIS
 124.175

DAGGETT
 113.2 DAG
 Chan 79

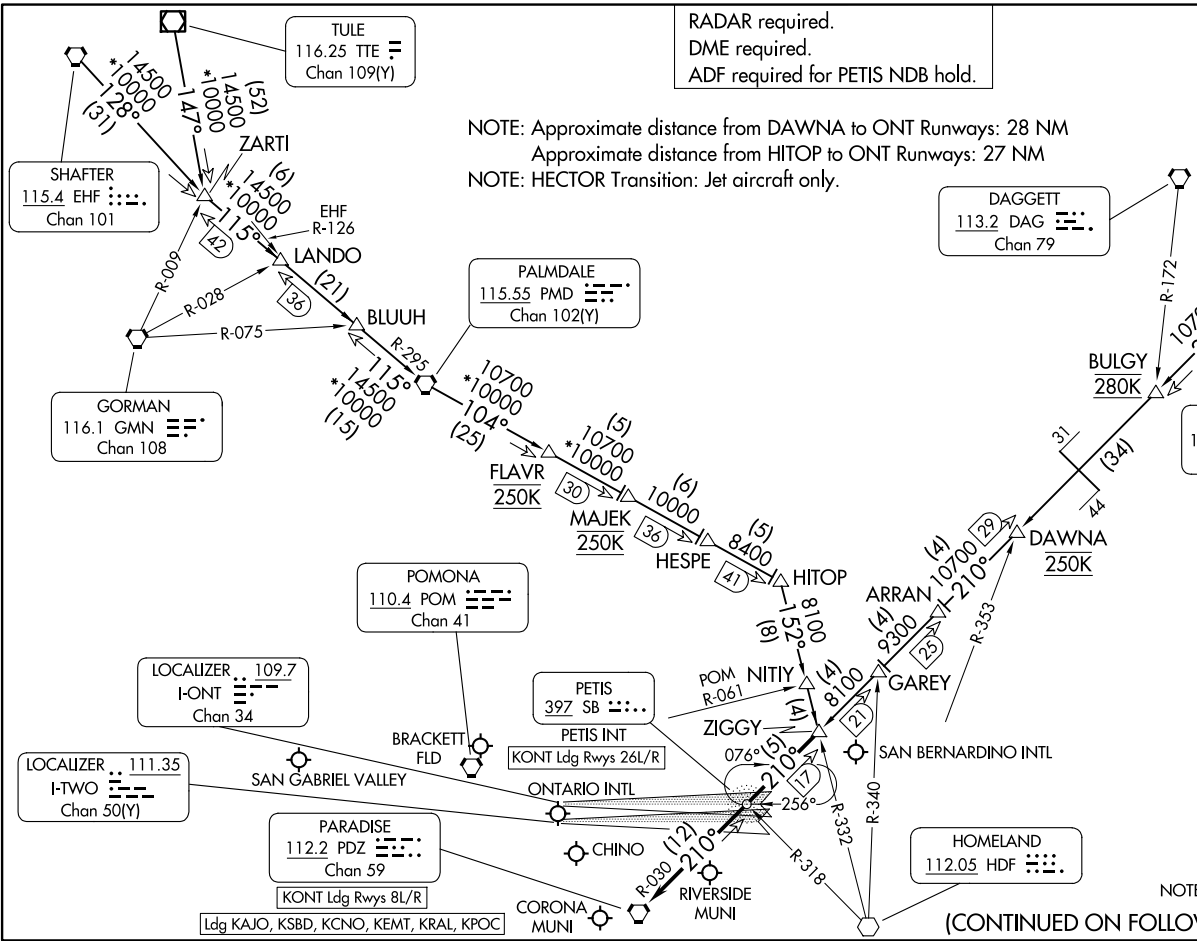
HECTOR
 112.7 HEC
 Chan 74

RADAR required.
 DME required.
 ADF required for PETIS NDB hold.

NOTE: Approximate distance from DAWNA to ONT Runways: 28 NM
 Approximate distance from HITOP to ONT Runways: 27 NM
 NOTE: HECTOR Transition: Jet aircraft only.

NOTE: Chart not to scale

(CONTINUED ON FOLLOWING PAGE)



ARRIVAL ROUTE DESCRIPTION

HECTOR TRANSITION (HEC.ZIGGY8): From over HEC VORTAC on HEC R-211 to BULGY then on HEC R-211 and PDZ R-030 to DAWNA, then on PDZ R-030 to ZIGGY. Thence

PALMDALE TRANSITION (PMD.ZIGGY8): From over PMD VORTAC on PMD R-104 to HITOP then HDF R-332 to ZIGGY. Thence

SHAFTER TRANSITION (EHF.ZIGGY8): From over EHF VORTAC on EHF R-128 and PMD R-295 to PMD VORTAC, then on PMD R-104 to HITOP then HDF R-332 to ZIGGY. Thence

TULE TRANSITION (TTE.ZIGGY8): From over TTE VOR/DME on TTE R-147 and PMD R-295 to PMD VORTAC, then on PMD R-104 to HITOP and HDF R-332 to ZIGGY. Thence

LANDING ONTARIO INTL

RUNWAYS 8L/R: From over ZIGGY on PDZ R-030 to PDZ VORTAC. Expect RADAR vectors to final approach course.

RUNWAYS 26L/R: From over ZIGGY on PDZ R-030 to PETIS INT, expect RADAR vectors for ILS approach.

LANDING ALL SATELLITE AIRPORTS

From over ZIGGY on PDZ R-030 to PDZ VORTAC. Expect RADAR vectors to final approach course.

SW-3, 20 MAR 2025 to 17 APR 2025

SW-3, 20 MAR 2025 to 17 APR 2025